

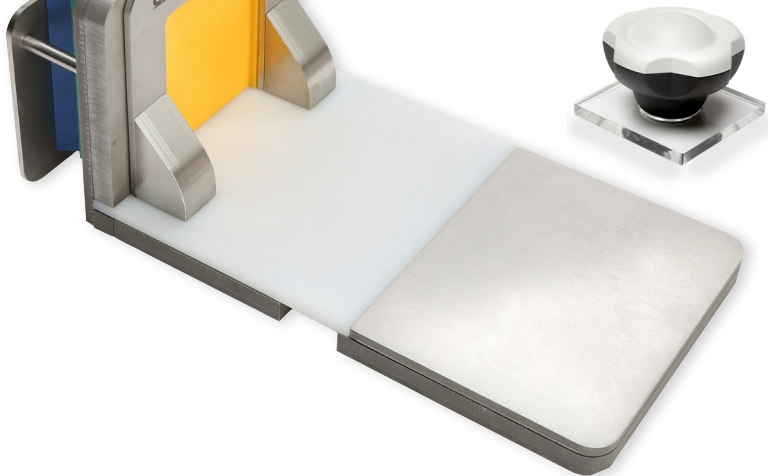
SUPER MEGA PRODUCTS



TRUSLICE: TISSUE SLICING SYTEMS

The TruSlice Cut-Up System was developed at Guy's and St. Thomas' NHS Foundation Trust in London, UK. TruSlice facilitates the precise slicing of fresh breast tissues in accordance with recommendations of HER2 testing in the UK and as recommended in the guidelines from ASCO/CAP for labs carrying out IHC on breast specimens in the USA.

- Eliminates dissection inaccuracies
- For slicing both fresh and fixed tissue
- Reduces grossing time



27131	Truslice Specimen Cut-Up System.....	each
27131-1	Truslice Surecut Board, White	each
27131-2	Steel Ruler, Rigid, 300Mm (12"), Ukas Certified.....	each
27131-3	TruSlice Immobilization Plate, 50mm (2").....	each
27131-4	TruSlice Immobilization Plate, 75mm (3").....	each



NEW BLACK DIAMOND™ AUTOPSY KNIVES

- High Quality Sheffield Stainless Steel
- Long Lasting Edge
- Completely Disposable; Eliminates Contamination
- Molded Ergonomic Handle With Finger Guard

13534	Black Diamond™ Autopsy Knives, assorted.....	each
13534-1	100mm (4") Cartilage Knife.....	box/10
13534-2	150mm (6") Trimming Knife.....	box/10
13534-3	200mm (8") Macro Knife.....	box/10
13534-4	250mm (10") Lung Knife.....	box/10
13534-5	300mm (12") Brain Knife.....	box/10

 **TED PELLA, INC.**
Microscopy Products for Science and Industry

www.tedpella.com sales@tedpella.com 800-237-3526

SUPER MEGA PRODUCTS



SUPER MEGA HEX CASSETTE

made of acetal polymer

Extra-large processing/embedding cassettes with covers. Disposable cassette designed to hold larger specimens with a maximum thickness of 12mm. Ideal for prostate, brain, breast tissue and eyes. Extremely useful for research and toxicology laboratories. The new "Hex" pores hold the large tissue specimens to the cassette much more securely than traditional slot design.

Inside dimensions: 64 x 49 x 13mm (2.52" x 1.89" x 0.51")
Outside dimensions: 75 x 52 x 17mm (2.95" x 2.05" x 0.71")

Use with 27197-1-series Super Mega Base Mold:

27198-1 to 27198-5 Super Mega Hex Cassettes.....pkg/100

SUPER MEGA HEX SLIM CASSETTE

made of acetal polymer

Extra-large processing/embedding cassettes with covers. Disposable cassette designed to hold larger specimens with a maximum thickness of 12mm. Ideal for prostate, brain, breast tissue and eyes. Extremely useful for research and toxicology laboratories. Optimal for large specimens grossed at 5mm thickness for improved fixation and tissue processing.

Inside dimensions: 64 x 50 x 5mm (2.52" x 1.89" x 0.51")
Outside dimensions: 75 x 52 x 7mm (2.95" x 2.05" x 0.71")

Use with 27197-3 Super Mega Hex Slim Cassette Stainless Steel Base Mold

27199-1 to 27199-5 Super Mega Hex Slim Cassettes..... pkg/100



SUPER MEGA CASSETTE STAINLESS STEEL BASE MOLDS

These molds are suited for all applications in specimen embedding with the #27171 and 27198 Series Super Mega Cassettes. Manufactured from high quality stainless steel for optimal thermal transfer, the mold has a highly polished surface for easy paraffin block removal. Reusable. Stackable for easy storage.



27197-1 and 27197-2 have higher sides than 27197. This allows for more paraffin to be used during embedding to assure a stronger bond of the paraffin block to the cassette.

27197-1	Super Mega Cassette Base Mold (60 X 45 X 15mm).....	each
27197-2	Super Mega Cassette Base Mold (36 X 36 X 10mm).....	each
27197-3	Super Mega Slim Cassette Base Mold (60 X 45 X 8mm)...	each
27197-4	Super Mega Mothership Cassette Base Mold, 60 x 45 x 8mm....	each

SUPER MEGA MOTHERSHIP CASSETTE

made of acetal polymer

Using this cassette helps meet recommendations for HER2 testing in the UK and ASCO/CAP in the USA. By reducing specimen thickness (5mm or less), processing time is shortened while ensuring high quality tissue processing.

The Super Mega Mother Ship cassette uses an innovative permanent docking bay for a standard tissue processing cassette printed with ID barcodes and/or test information. This enables the specimen to be entered onto a LIMS guaranteeing its accurate and reliable tracking. 100 printable cassettes are provided with each box of 100 Super Mega Mothership Cassettes. Casting can be done in 30 minutes at -8°C. Available in 7 colors.

Inside dimensions: 64 x 50 x 5mm (2.52 x 1.89 x 0.51")
Outside dimensions: 75 x 52 x 17mm (2.95 x 2.05 x 0.71")

Use with 27197-4 Super Mega Stainless Steel Base Mold

22100	Super Mega Mothership Cassette, White	pkg/100
22100-1	Super Mega Mothership Cassette, Pink	pkg/100
22100-2	Super Mega Mothership Cassette, Green.....	pkg/100
22100-3	Super Mega Mothership Cassette, Yellow.....	pkg/100
22100-4	Super Mega Mothership Cassette, Blue.....	pkg/100
22100-5	Super Mega Mothership Cassette, Red.....	pkg/100
22100-6	Super Mega Mothership Cassette, Gray	pkg/100





BLOCSTOR 3 FOR SUPER MEGA CASSETTE TISSUE BLOCKS

The BlocStor range of tissue block storage products is manufactured from recycled fiberboard and provides a cost-efficient archiving and storage solution. All boxes are designed for strength, rigidity, long term archiving of tissue blocks, and for maximum utilization of storage space.

27136 BlocStor3 Super Mega Cassette Block and 2 x 3" Slide Storage Unit, 3 rows each

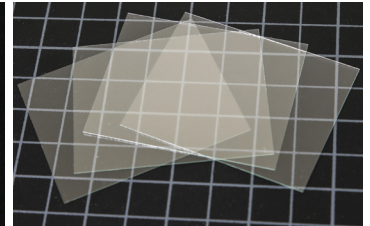
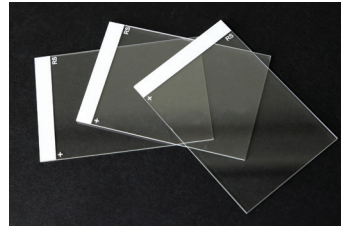


BLOCFILE1 FOR SUPER MEGA CASSETTES

BlocFile1 is an economical drawer system for block storage. Manufactured from high-density fiberboard for strength, rigidity and durability, the BlocFile offers an economical solution to the problem of large tissue block storage.

- Drawer system for easy access
- Stackable to save bench space
- Made from recycled material
- Supplied assembled or flat-packed

27137 BlocFile1 Super Mega Cassette Block Storage Unit, 4 row drawer each



HISTOBOND®+SUPER MEGA SLIDES & COVER GLASS

These slides have thin white frosted end for labeling. The unfrosted area is sized to accommodate the standard large section cut from a paraffin embedded tissue block from the large Super Mega and Super Mega Slim Base Molds (60 x 45mm).

Dimensions: 75.2 x 50.4 x 1mm (3" x 2" x 1mm)

260240 HISTOBOND® + Super Mega Slidespkg/50
 260378 Coverglass for Super Mega Slides, #1.5 Thickness.....pkg/100

CORNING® LARGE GLASS MICROSCOPE SLIDES, 75 X 50MM

Finest quality noncorrosive glass, with finely ground edge. Precleaned and packed vertically. Packed 72 slides per box, 2 boxes per package. No notable interference from UV absorption or reflection in the 250-350nm range (tested with 280nm).



75 x 50 x 1mm (2.95 x 1.96 x .040"), Plain, Large
 Thickness: 0.96 to 1.06mm (0.038 to 0.042")

26005 Corning® Glass Slides, 75 x 50mm, Large pkg/144



ECONOMY SLIDE MAILER FOR 75 X 50MM (3 X 2") SLIDE

Made from sturdy 1.93mm (0.076") thick chipboard. Holds one 75 x 50mm or 3 x 2" glass slide for easy mailing or storage.

Dimensions when closed: 76.2 x 95.3 x 5.8mm (3 x 3.75 x 0.23")

2119 Economy Slide Mailer, for 1 Slide box/10

SUPER MEGA PRODUCTS



TALL SLIDE BOXES

The Tall Slide Box made of sturdy ABS material is ideal for storage and transport of tall 3 x 2" (75 x 50mm) microscope slides. Available in a 100-slide and a NEW 25-slide capacity box with grooved slots to prevent slide to slide contact. The base contains location numbers for convenient inventory, a cork liner in the 100-slide box and a foam liner in the 25-slide box. Lid interior contains a numbered index sheet for cataloging and identification. The deep design of the Tall Slide Box provides safe storage for the taller, non-standard microscope slides.

2197	Tall Slide Box, 100 slides (2 x 3" slides)	each
2195	Tall Slide Box, 25 slides (2 x 3" slides)	each



SLIDE RACK ADAPTER

Stainless steel Slide Rack Adapter kit for auto stainer slide racks. Allows the slide carrier rack for standard 1" x 3" slides to accommodate large slides for staining. The Slide Rack Adapter fits into the standard slide space like a slide. This companion adapter can be placed the appropriate distance to create a space for holding the large slide. The Slide Rack Adapter fits most staining racks.

21055	Slide Rack Adapter	pkg/2
-------	--------------------------	-------



SUPER MEGA UNIVERSAL CASSETTE CLAMP FOR MICROTOMES

Universal Super Mega Cassette Clamp is used during the microtomy of large tissue blocks. Incorporating an intuitive quick-release system, the clamp can securely hold any tissue processing cassette from the Super Mega series of cassettes.

Use with Super Mega Hex Cassettes, and Super Mega Hex Slim Cassettes with 27199 Spacer Bar

- Compatible with Leica Biosystems RM 2100 & RM 2200 and Microm HM Series of microtomes" (70mm vertical stroke)
- Secure Clamping of Super Mega Cassettes
- Quick release function saves time
- Unique design avoids collision between the clamp and microtome knife holder
- Highly durable, manufactured from aluminum

27198	Universal Cassette Clamp for Super Mega Cassettes and Super Mega Hex Slim Cassettes.....	each
-------	------------------------------------------------------------------------------------------	------

©Ted Pella, Inc. 09-03-2019, Printed in U.S.A.

 **TED PELLA, INC.**
 Microscopy Products for Science and Industry

www.tedpella.com sales@tedpella.com 800-237-3526