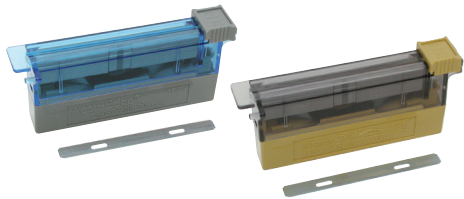


# TISSUE SECTIONING SUPPLIES FOR PRODUCT DETAILS AND COMPLETE SELECTIONS [www.tedpella.com](http://www.tedpella.com)



## TISSUE FLOATATION WATER BATH

- 28156 Programmable Tissue Floating Bath, 115VAC, 5A ..... each
- 28156-230 Programmable Tissue Floating Bath, 230VAC, 2.5A ..... each



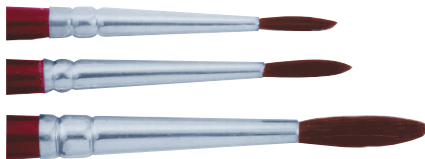
## SMALL SLIDE WARMER FOR 24 SLIDES

- 12856 Small Slide Warmer, 115V, 60Hz, 0.9A ..... each
- 12856-220 Small Slide Warmer, 220V, 50/60Hz, 0.9A ..... each



## MICROTOME BLADES FOR SECTIONING

- 27235 Accu-Edge® 4689 Low Profile Blades, Dispenser of 50, 80L x 8.31W x 0.26mmT (3.15" L x 3.27" W x 0.01" T)..... each
- 27236 Tissue-Tek® Feather® 4980 Low Profile Blades, Dispenser of 50, 80L x 8W x 0.24mmT (3.15" L x 3.15" W x 0.009" T)..... each
- 27237 Accu-Edge® 4685 High Profile Blades, Dispenser of 50, 75.7L x 14W x 0.31mmT (2.98" L x .55" W x 0.012" T)..... each
- 27238 Dura-Edge® 7223 Low Profile Blades, PTFE Coated, Dispenser of 50, 77L x 8W x 0.315mmT (3" L x .315" W x 0.012" T)..... each
- 27241 Dura-Edge® 7310 High Profile Blades, PTFE Coated, Dispenser of 50, 77L x 14W x 0.3mmT (3" L x .55" W x 0.012" T)..... each
- 27243 Dura-Edge® 7203 High Profile Blades, Ceramic Coated, Dispenser of 50, 77L x 14W x 0.3mmT (3" L x .55" W x 0.012" T)..... each



## CAMEL'S HAIR BRUSHES

- 11859 Camel's Hair Brush, #1 .....pkg/3
- 11860 Camel's Hair Brush, #2 .....pkg/3
- 11862 Camel's Hair Brush, #4 .....pkg/3
- 11870 Camel's Hair Brushes Set, #1, #2, #4 .....pkg/3



## AESCULAP® FORCEPS

- 5002-23 Medium Dissecting Forceps, Straight, 115mm (4.53") .....each
- 5002-35 Medium Dissecting Forceps, Curved, 130mm (5.12") .....each



## MICROSCOPY FORCEPS - STAINLESS STEEL

- 5443 Microscopy Forceps, 115mm (4.53") ..... each
- 5445 Microscopy Forceps, 145mm (5.71") ..... each



## DISSECTING FORCEPS

- 5431 Curved Forceps, Serrated Tips, Chrome Steel, 117mm (4.60")....each
- 5432 Curved Forceps, Serrated Tips, Stainless Steel, Polished Finish 140 mm (5.50"), 0.40 x 0.45mm point..... each



LARGE SELECTION OF GLASS MICROSCOPE SLIDES

[www.tedpella.com](http://www.tedpella.com)