

# PELCO SEMClip™ SPECIMEN MOUNTS

The easy, quick and clean way to mount any type of thin specimen on a specimen stub.

The PELCO SEMClip™ SEM specimen mounts have been specifically designed to provide an easy, quick and clean way to mount any type of thin specimen on a specimen stub. The spring loaded beryllium copper clips can accommodate samples with a thickness up to 2mm. Samples are held down securely by a small spring-loaded clip and allow for easy change of samples. They do not require the use of adhesives thus avoiding waiting times and possible outgassing issues.

The PELCO SEMClip™ mounts are available with single and multiple clips and are ideal to hold silicon chips, paper, wire, threads, thin films, sheet metal, etc. The PELCO SEMClip™ mounts with multiple clips can be used to either hold larger samples or multiple smaller samples. The PELCO SEMClip™ mounts are also ideal to hold silicon chip specimen support mounts.

PELCO SEMClip™ versions with 45° and 90° are available for cross section examination. For low working distance and high tilt applications, consider the PELCO Low Profile SEMClip™ Mounts.

Pin stub versions of PELCO SEMClip™ mounts are available in diameters from 18 to 100mm and can be used with all SEMs using pin stubs: FEI/Philips, ZEISS/LEO, Cambridge, Leica, Amray, CamScan and Tescan.

For clamping wires, small tubes, fabric, etc. consider the PELCO SEMclamp™ Holders

The cylinder mount versions for JEOL SEMs are available in 25 and 32mm diameter. The SEMClip™ cylinder mount for Hitachi SEMs (with M4 thread) are available in 15 to 100mm diameter.

Special versions are available for 90°, 45° and variable tilt specimen stubs.

## SEMClip™ PIN MOUNTS FOR FEI/PHILIPS, ZEISS/LEO, CAMBRIDGE, LEICA, AMRAY, CAMSCAN AND TESCAN SEMS



- 16119-10 SEMClip™ Pin Mount, Ø18mm, 1 Clip ..... each
- 16119--9-10 SEMClip™ Pin Mount, Ø18mm, 6mm Pin Height, 1 Clip ..... each
- 16144-10 SEMClip™ Pin Mount, Ø25mm, 1 Clip ..... each
- 16144-20 SEMClip™ Pin Mount, Ø25mm, 2 Clips ..... each
- 16144-30 SEMClip™ Pin Mount, Ø25mm, 3 Clips ..... each
- 16144-9-10 SEMClip™ Pin Mount, Ø25mm, 6mm Pin Height, 1 Clip ..... each
- 16144-9-20 SEMClip™ Pin Mount, Ø25mm, 6mm Pin Height, 2 Clips..... each
- 16144-9-30 SEMClip™ Pin Mount, Ø25mm, 6mm Pin Height, 3 Clips..... each



- 16148-10 SEMClip™ Pin Mount, Ø32mm, 1 Clip ..... each
- 16148-20 SEMClip™ Pin Mount, Ø32mm, 2 Clips ..... each
- 16148-30 SEMClip™ Pin Mount, Ø32mm, 3 Clips ..... each



- 16112-10 SEMClip™ Pin Mount, Ø38mm, 1 Clip ..... each
- 16112-20 SEMClip™ Pin Mount, Ø38mm, 2 Clips ..... each
- 16112-30 SEMClip™ Pin Mount, Ø38mm, 3 Clips ..... each



- 16113-10 SEMClip™ Pin Mount, Ø50mm, 1 Clip ..... each
- 16113-20 SEMClip™ Pin Mount, Ø50mm, 2 Clips ..... each
- 16113-30 SEMClip™ Pin Mount, Ø50mm, 3 Clips ..... each
- 16113-40 SEMClip™ Pin Mount, Ø50mm, 4 Clips ..... each
- 16113-80 SEMClip™ Pin Mount, Ø50mm, 8 Clips ..... each

## SEMClip™ REPLACEMENT CLIPS & BRASS SCREWS



- 16399 SEMClip™ Clips .....pkg/10
- 16399-10 SEMClip™ Screws, M2 x 3mm.....pkg/10

# PELCO SEMClip™ SPECIMEN MOUNTS FROM TED PELLA, INC.

PELCO SEMClip™ PIN MOUNTS FOR FEI/PHILIPS, ZEISS/LEO, CAMBRIDGE, LEICA, AMRAY, CAMSCAN AND TESCAN SEMS (continued from previous page)



- 16113-10 SEMClip™ Pin Mount, Ø50mm, 1 Clip ..... each
- 16113-20 SEMClip™ Pin Mount, Ø50mm, 2 Clips ..... each
- 16113-30 SEMClip™ Pin Mount, Ø50mm, 3 Clips ..... each
- 16113-40 SEMClip™ Pin Mount, Ø50mm, 4 Clips ..... each
- 16113-80 SEMClip™ Pin Mount, Ø50mm, 8 Clips ..... each



- 16114-20 SEMClip™ Pin Mount, Ø63mm, 2 Clips ..... each
- 16114-30 SEMClip™ Pin Mount, Ø63mm, 3 Clips ..... each
- 16114-40 SEMClip™ Pin Mount, Ø63mm, 4 Clips ..... each



- 16116-20 SEMClip™ Pin Mount, Ø100mm, 2 Clips ..... each
- 16116-40 SEMClip™ Pin Mount, Ø100mm, 4 Clips ..... each
- 16116-60 SEMClip™ Pin Mount, Ø100mm, 6 Clips ..... each



- 16143 SEMClip™ Pin Mount, Ø12.5mm, 90°, 1 Clip..... each



- 16141 SEMClip™ Pin Mount, 12 x 12 x 14mm, 90°, 4 Clips..... each

The easy, quick and clean way to mount any type of thin specimen on a specimen stub.

16147 SEMClip™ Block with Pin Mount, 12 x 48 x 14mm, 90°, 10 Clips..... each  
 Numbered 1-10, engraved on top, not shown in picture.



16155 SEMClip™ Block with Pin Mount, 12 x 48 x 14mm, 45/90°, 8 Clips..... each  
 Numbered 1-8, engraved on top, not shown in picture.



16354-20 SEMClip™ Pin Mount, Ø25 x 16mm, Double 90°, 2 Clips ..... each



16355-20 SEMClip™ Pin Mount, Ø25 x 16mm, 45/90°, 2 Clips..... each



15339-10 SEMClip™ on Compact Variable Tilt Mount 0-90°, Table Size 11 x 14mm,  
 Overall Size 14 x 14.3 x 14.5mm, 1 Clip ..... each



**PELCO SEMClip™ CYLINDER MOUNTS FOR JEOL SEMs**

16151-10 SEMClip™ JEOL Cylinder Mount, Ø25 x 8mm, 1 Clip ..... each  
 16151-20 SEMClip™ JEOL Cylinder Mount, Ø25 x 8mm, 2 Clips ..... each  
 16151-30 SEMClip™ JEOL Cylinder Mount, Ø25 x 8mm, 3 Clips ..... each



16216-10 SEMClip™ JEOL Cylinder Mount, Ø32 x 8mm, 1 Clip ..... each  
 16216-20 SEMClip™ JEOL Cylinder Mount, Ø32 x 8mm, 2 Clips ..... each  
 16216-30 SEMClip™ JEOL Cylinder Mount, Ø32 x 8mm, 3 Clips ..... each



16157-10 SEMClip™ JEOL Cylinder Mount, Ø25 x 20mm, 45°, 1 Clip ..... each



16359-20 SEMClip™ JEOL Cylinder Mount, Ø25 x 16mm, 45/90°, 2 Clips..... each



16379-20 SEMClip™ JEOL Cylinder Mount, Ø32 x 12mm, 45/90°, 2 Clips..... each



(continued on next page)

# PELCO SEMClip™ SPECIMEN MOUNTS FROM TED PELLA, INC.

## PELCO SEMClip™ CYLINDER MOUNTS FOR JEOL SEMs (continued from previous page)



16358-20 SEMClip™ JEOL Cylinder Mount, Ø25 x 16mm, Double 90°, 2 Clips ..... each



16378-20 SEMClip™ JEOL Cylinder Mount, Ø32 x 12mm, Double 90°, 2 Clips ..... each

## PELCO SEMClip™ CYLINDER MOUNTS FOR HITACHI SEMs



16324-10 SEMClip™ M4 Cylinder Mount, Ø15 x 6mm, 1 Clip..... each



16327-10 SEMClip™ M4 Cylinder Mount, Ø25 x 6mm, 1 Clip..... each



16327-20 SEMClip™ M4 Cylinder Mount, Ø25 x 6mm, 2 Clips..... each



16327-30 SEMClip™ M4 Cylinder Mount, Ø25 x 6mm, 3 Clips..... each



16326-10 SEMClip™ M4 Cylinder Mount, Ø32 x 10mm, 1 Clip.... each



16326-20 SEMClip™ M4 Cylinder Mount, Ø32 x 10mm, 2 Clips.. each



16326-30 SEMClip™ M4 Cylinder Mount, Ø32 x 10mm, 3 Clips.. each



16328-10 SEMClip™ M4 Cylinder Mount, Ø50 x 6mm, 1 Clip..... each



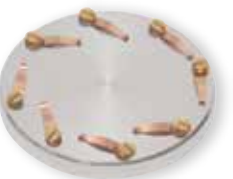
16328-20 SEMClip™ M4 Cylinder Mount, Ø50 x 6mm, 2 Clips..... each



16328-30 SEMClip™ M4 Cylinder Mount, Ø50 x 6mm, 3 Clips..... each



16328-40 SEMClip™ M4 Cylinder Mount, Ø50 x 6mm, 4 Clips..... each



16328-80 SEMClip™ M4 Cylinder Mount, Ø50 x 6mm, 8 Clips..... each



16116-4-20 SEMClip™ M4 Cylinder Mount, Ø63 x 4.5mm, 2 Clips..... each



16116-4-30 SEMClip™ M4 Cylinder Mount, Ø63 x 4.5mm, 3 Clips..... each



16116-4-40 SEMClip™ M4 Cylinder Mount, Ø63 x 4.5mm, 4 Clips..... each



Can hold a 2" (51mm) wafer.

The easy, quick and clean way to mount any type of thin specimen on a specimen stub.



- 16116-4-20 SEMClip™ M4 Cylinder Mount, Ø100 x 5mm, 2 Clips..... each
- 16116-4-40 SEMClip™ M4 Cylinder Mount, Ø100 x 5mm, 4 Clips..... each
- 16116-4-60 SEMClip™ M4 Cylinder Mount, Ø100 x 5mm, 6 Clips..... each

- 16356-20 SEMClip™ M4 Cylinder Mount, Ø25 x 16mm, Double 90°, 2 Clips..... each



- 16314-20 SEMClip™ M4 Cylinder Mount, Ø32 x 12mm, Double 90°, 2 Clips..... each



- 16241 SEMClip™ M4 Mount, 12 x 12 x 14mm, 90°, 4 Clips ..... each



- 16147-4 SEMClip™ M4 Mount, 12 x 48 x 14mm, 45/90°, 10 Clips ..... each  
*Numbered 1-10, engraved on top, not shown in picture.*



- 16155-4 SEMClip™ M4 Mount, 12 x 48 x 14mm, 45/90°, 8 Clips ..... each  
*Numbered 1--8, engraved on top, not shown in picture.*



- 15349-10 SEMClip™ on Compact Variable Tilt M4 Mount 0-90°, Table Size 11 x 14mm,  
Overall Size 14 x 14.3 x 14.5mm, 1 Clip ..... each



- 16357-20 SEMClip™ M4 Cylinder Mount, Ø25 x 16mm, 45/90°, 2 Clips ..... each



- 16315-20 SEMClip™ M4 Cylinder Mount, Ø32 x 12mm, 45/90°, 2 Clips ..... each



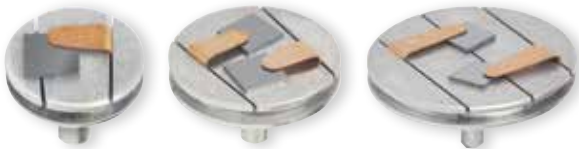
# PELCO LOW PROFILE SEMClip™ SPECIMEN MOUNTS



The PELCO Low Profile SEMClip™ Specimen Mounts have been designed for high tilt and short working distance imaging applications. The flatter style SEMClip™, allows for bringing up the specimen within 1mm of the pole piece of the SEM. They are designed to clamp flat specimens such as silicon chips with a thickness ranging from approximately .01 to 1mm. The low profile spring clips are hooked in the provided narrow slots in the specimen mounts and can be moved for optimum positioning. The spring material used is phosphor bronze, which can be easily adjusted to provide better clamping or to accommodate thicker samples. The SEMClip™ mounts are ideal to clamp the Silicon Chip Specimen Supports (#16006, #16007 and #16008). If working distance or tilting is no concern, or you need a pre-tilted SEMClip™ mount, you might want to consider the standard PELCO SEMClip™ Specimen Mounts. The PELCO Low Profile SEMClip™ Pin Mounts are available in 12.7, 18 and 25mm diameter and can be used on FEI/Philips, ZEISS/LEO, Tescan, Cambridge, Leica, Amray and CamScan SEMs. For JEOL SEMs there is a 25mm diameter cylinder mount available and for Hitachi SEMs the Low Profile SEMClip™ is available in 15 and 25mm diameter cylinder mounts.

*Note: All of the mounts below are shown holding 0.5mm (0.02") thick Silicon Chip Specimen Supports to demonstrate functionality.*

## PELCO LOW PROFILE SEMClip™ PIN MOUNTS FOR FEI/PHILIPS, ZEISS/LEO, TESCAN, CAMBRIDGE, LEICA, AMRAY AND CAMSCAN SEMs



- 16111-55 Low Profile SEMClip™ Pin Mount, Ø12.7mm, 2 Short Clips ..... each
- 16119-55 Low Profile SEMClip™ Pin Mount, Ø18mm, 3 Short Clips ..... each
- 16144-55 Low Profile SEMClip™ Pin Mount, Ø25mm, 2 Short Clips and 2 Long Clips..... each

## PELCO LOW PROFILE SEMClip™ CYLINDER MOUNT FOR JEOL SEMs



- 16151-55 Low Profile SEMClip™ Cylinder Mount, Ø25 x 10mm, 2 Short Clips and 2 Long Clips ..... each

## PELCO LOW PROFILE SEMClip™ CYLINDER MOUNTS FOR HITACHI SEMs



- 16324-55 Low Profile SEMClip™ Cylinder Mount, Ø15 x 6mm, 2 Short Clips .....each
- 16327-55 Low Profile SEMClip™ Cylinder Mount, Ø25 x 6mm, 2 Short Clips and 2 Long Clips .....each



## PELCO LOW PROFILE SEMClip™ CLIPS

Made from phosphor bronze and can be bent to accommodate samples. Each pack of 10 includes 5 short and 5 long Low Profile Clips.

- 16395 SEMClip™ Clips .....pkg/10

# PELCO SEMClamp™ SPECIMEN HOLDERS

## MINI PELCO SEMClamp™

Available on a standard Ø12.7mm (1/2") pin stub or a Ø15 x 10mm M4 cylinder mount. Convenient for holding flat or thin specimens such as Si chips, wires, foil and small tubes. Material: vacuum grade aluminum with brass screw.

- 15294 Mini PELCO SEMClamp™ Pin Mount, Ø12.7mm.....each
- 15494 Mini PELCO SEMClamp™ M4 Cylinder Mount, Ø15 x 10mm .....each



## SMALL PELCO SEMClamp™

15mm (0.6") long with 10mm (0.4") wide clamping area. Available on a standard pin stub 3.2mm (1/8") or a 15 x 10mm M4 cylinder mount (not shown). Convenient holder for clamping down samples up to 7mm overall thickness under the strips. Ideal for wires, small tubes, strips, and smaller flat samples. Overall dimensions 23 x 20 x 9mm (0.9" x 0.78" x 0.35"). Material: machined aluminum with brass screws.

- 15347 Small PELCO SEMClamp™ Pin Mount, 15 x 10mm .....each
- 15347-4 Small PELCO SEMClamp™ M4 Cylinder Mount, 15 x 10mm.....each



## MEDIUM PELCO SEMClamp™

25mm (1") long with 15mm (0.6") wide clamping area. Available on a standard pin stub 3.2mm (1/8") (not shown) or a 25 x 15mm M4 cylinder mount. Convenient holder for clamping down samples up to 7mm overall thickness can be clamped under the strips. Ideal for wires, small tubes, strips, and smaller flat samples. Overall dimensions 33 x 25 x 9mm (1.3" x 1" x 0.35"). Material: machined aluminum with brass screws.

- 15348 Medium PELCO SEMClamp™ Pin Mount, 25 x 15mm.....each
- 15348-4 Medium PELCO SEMClamp™ M4 Cylinder Mount, 25 x 15mm .....each



## LARGE PELCO SEMClamp™

40mm (1.6") long with 20mm (0.8") wide clamping area. Standard pin stub 3.2mm (1/8"). Convenient holder for clamping down samples up to 7mm overall thickness can be clamped under the strips. Ideal for wires, small tubes, strips, and smaller flat samples. Overall dimensions 48 x 30 x 9mm (1.9" x 1.2" x 0.35"). Material: machined aluminum with brass screws.

- 15349 Large PELCO SEMClamp™ Pin Mount, 40 x 20mm..... each



## RECESSED PELCO SEMClamp™

5mm recess allows for background free imaging and no contact with sample surface in imaging area. Available on a standard pin stub 3.2mm (1/8") or a 25 x 15mm M4 cylinder mount (not shown). Clamping area is 25mm (1") long and 15mm (0.6") wide. Maximum thickness 7mm under the clamping strips. Overall dimensions 33 x 25 x 11mm 1.3" x 1" x 0.43"). Material: machined aluminum with brass screws.

- 15346 Recessed PELCO SEMClamp™ Pin Mount, 25 x 15mm ..... each
- 15346-4 Recessed PELCO SEMClamp™ M4 Cylinder Mount, 25 x 15mm..... each



# GEOLOGICAL THIN SECTION HOLDERS



## SINGLE GEOLOGICAL THIN SECTION HOLDER

Holds a standard geological thin section or petrographic slides of up to 47 x 27mm (compatible with 45 x 25mm, 46 x 26mm, 46 x 27mm, and 47 x 27mm). 2 clips are provided for secure holding. Tweezer inserts enable easy loading. Overall dimensions are 55 x 30 x 8mm. Pin length is 9.5mm. Also available on an M4 cylinder mount (not shown). Material: aluminum with copper clips and brass screws.

- 15341 Single Geological Thin Section Holder, 3.2mm (1/8") Pin.....each
- 15341-4 Single Geological Thin Section Holder, M4 Cylinder Mount .....each



## VARIABLE SIZE GEOLOGICAL THIN SECTION HOLDER

This variable size geological thin section holder holds either standard petrographic slides of up to 48 x 28mm or slides from 40 x 20mm to 75 x 25mm. Two clips are provided for secure holding. Tweezers insert enables easy loading. Overall dimensions are 51 x 32 x 8mm. Standard  $\phi$ 3.2mm (1/8") pin length is 9.5mm. Also available on an M4 cylinder mount (not shown). Material: vacuum grade aluminum with copper clips and brass screws.

- 15345 Variable Size Geological Thin Section Holder, 3.2mm (1/8") Pin .....each
- 15345-4 Variable Size Geological Thin Section Holder, M4 Cylinder Mount.....each



## DUAL GEOLOGICAL THIN SECTION HOLDER

Holds two standard geological thin sections or petrographic slides of up to 47 x 27mm (compatible with 45 x 25mm, 46 x 26mm, 46 x 27mm, and 47 x 27mm). Tweezer inserts enable easy loading. Clips are provided for secure holding. Overall dimensions are 55 x 58 x 8mm. Pin length is 9.5mm. Also available on an M4 cylinder mount (shown). Material: aluminum with copper clips and brass screws.

- 15342 Dual Geological Thin Section Holder, 3.2mm (1/8") Pin.....each
- 15342-4 Dual Geological Thin Section Holder, M4 Cylinder Mount .....each



## QUADRUPLE GEOLOGICAL THIN SECTION HOLDER

Holds four standard geological thin sections or petrographic slides of up to 47 x 27mm (compatible with 45 x 25mm, 46 x 26mm, 46 x 27mm, and 47 x 27mm). Tweezer inserts enable easy loading. Clips are provided for secure holding. Overall dimensions are 107 x 58 x 8mm. Pin length is 8.5mm. Also available on an M4 cylinder mount. Material: aluminum with copper clips and brass screws.

- 15344 Quad Geological Thin Section Holder, 3.2mm (1/8") Pin .....each
- 15344-4 Quad Geological Thin Section Holder, M4 Cylinder Mount.....each

©Ted Pella, Inc. 10-28-2013, Printed in U.S.A.