

PELCO® MODULAR SEM SPECIMEN HOLDERS

Extensive line of interchangeable specimen holders and stage adapters; compatible with all SEM brands.

- Full interchangeability between SEM platforms
- Built-in grounding contacts
- Easy specimen load / unload
- Low profile versions compatible with airlocks
- Single and multiple specimen holders
- Mix, match and upgrade to meet your needs
- All PELCO® Modular SEM Specimen Holders have an M4 threaded connection and are compatible with any Hitachi SEM with an M4 thread stage adapter

UNDERSTANDING THE MODULAR CONCEPT

The PELCO® Modular SEM Specimen Holder System offers the most comprehensive and cost effective range of specimen holders available today with full interchangeability between SEM models or brands. The system consists of a large selection of stage adapters for most commercially available SEMs, an extensive range of interchangeable SEM specimen holders and adapter buttons for some of the SEM stage adapters.

All stage adapters use either an M4 screw (supplied) or M4 thread to attach the SEM specimen holders. All SEM specimen holders have M4 thread in the bottom. The Modular SEM Specimen Holders will fit directly on the Hitachi style stage with M4 thread.

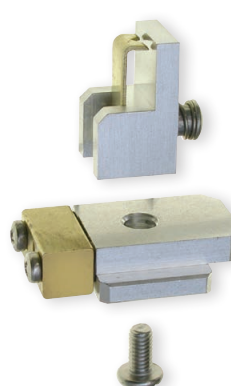
Only the dovetail style stage adapters for JEOL and Zeiss/LEO need either a short button or an extended button to attach the Modular SEM Specimen Holder to the stage adapter.

UNIQUE ADVANTAGES OF THIS CONCEPT

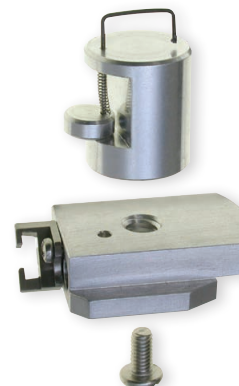
If you are using different models of SEMs in one location or your new SEM comes from a different manufacturer, you can continue to use the versatile PELCO® Modular SEM Specimen Holders just by adding the appropriate SEM stage adapter.

The PELCO® SEM Specimen Holders offer capabilities not available from SEM manufacturers or specimen holders supplied with the SEM.

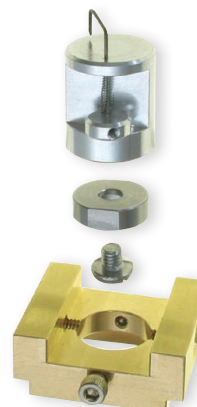
New specimen holders are added to the PELCO® Modular SEM Holder System on a regular basis.



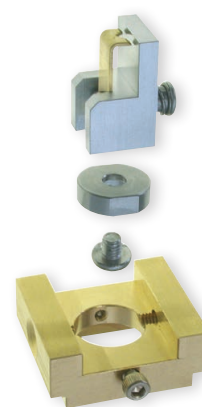
HITACHI



NEW-STYLE HITACHI



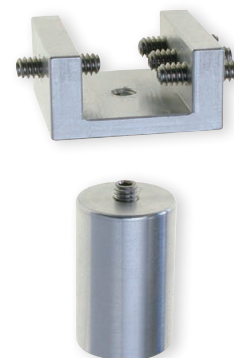
ZEISS/LEO



JEOL

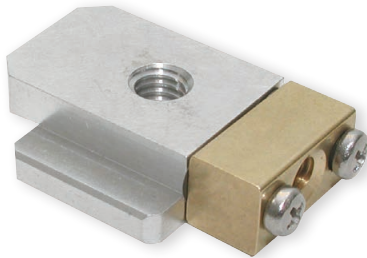


FEI/PHILIPS



AMRAY, TESCAN, CAMSCAN, ISI,
ABT, TOPCON, LEICA,
CAMBRIDGE INSTRUMENTS

PELCO® MODULAR SEM SPECIMEN HOLDER SYSTEM

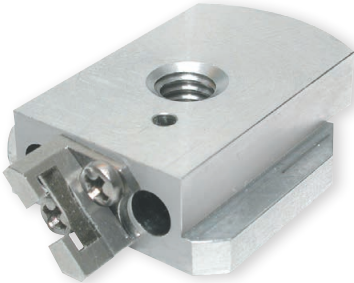


T-BASE ADAPTER FOR HITACHI SEM

S-800 / 4000 / 4100 / 4200 / 4300 / 4500 / 4700 / 3600N

Specimen exchange T-base adapter incorporates an aluminum body and self-aligning double sided brass thread block to facilitate smooth insertion on the SEM stage and to prevent binding. Can be used with any of the Modular SEM Specimen Holders. Includes M4 screw.

15370 T-Base Adapter for Hitachi SEM..... each

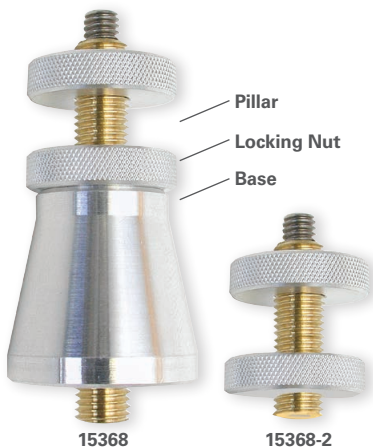


NEW STYLE T-BASE ADAPTER FOR HITACHI FESEM

S-4800, SU-70 / 6600 / 8000

Made of vacuum grade aluminum with counterpart for airlock manipulator and locking rod. Can be used with any of the Modular SEM Specimen Holders. Includes M4 screw.

15370-1 New Style T-Base Adapter for Hitachi FESEM..... each



STAGE ADAPTER FOR FEI/PHILIPS SEM, FESEM & DUAL BEAM SYSTEMS

Made of brass pillar and aluminum base and locking nuts. This particular material choice prevents "binding" of parts in the SEM stage. Available in standard version with standard pillar, base and two locking nuts and short version with short pillar and two locking nuts. Pillar with M6 fine thread and M4 thread on top. Can be used with any of the of the Modular SEM Specimen Holders.

15368 Standard Adapter Kit: Includes Standard Pillar, Base and Two Locking Nuts..... each
 15368-2 Short Adapter Kit: Includes Short Pillar and Two Locking Nuts..... each
 15368-10 FEI/Philips Stage Adapter Base Only each
 15368-20 FEI/Philips Stage Adapter Standard Pillar Only (40mm)..... each
 15368-25 FEI/Philips Stage Adapter Short Pillar Only (20mm)..... each
 15368-45 FEI/Helios Stage Adapter Long Pillar Only (45mm) each
 15373-22 FEI/Philips Locking Nut Only..... each

DOVETAIL STAGE ADAPTER FOR JEOL SEM

JSM35 / 50 / 840, JXA733

Solid brass Dovetail Stage Adapter can be used on many JEOL SEMs and is compatible with the airlock used on JEOL SEMs. The 14mm hole in the center is compatible with other JEOL holders. Two Button style adapters are available to connect the Modular SEM Specimen Holders. The Short Adapter Button (15372) is used for the smaller specimen holders only, whereas the Extended Adapter Button (15372-10) can be used with all Modular SEM Specimen Holders. See page 4 for Adapter Buttons details.

15371 Dovetail Stage Adapter for JEOL 35 / 50 / 800 / 733 SEM..... each

DOVETAIL STAGE ADAPTER FOR JEOL FESEM

JSM7800F / 7601F / 7600F / 7100F / 7000F / 6700F / 6500F

Solid brass Dovetail Stage Adapter can be used on the JEOL FESEMs listed above. Can be used with any of the Modular SEM Specimen Holders if the SEM stage travel permits this. Includes M4 screw.

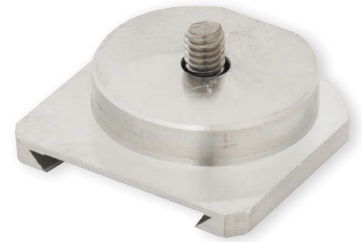
15371-67A Dovetail Stage Adapter for JEOL 7000 / 6700 / 6500 FESEM..... each

DOVETAIL STAGE ADAPTER FOR JEOL SEM

6510 / 6390 / 6380 / 6010 / 5700 / 5500 / 5410 / 5400 / 5300 / T330 / T220 / T300 / T200 / TT100 / T20

Aluminum Dovetail Stage Adapter compatible with the JEOL SEMs listed above. Can be used with any of the Modular SEM Specimen Holders if the SEM stage travel permits this. Includes M4 screw.

15399 Dovetail Stage Adapter for JEOL SEM 6000 / 5000 / T..... each

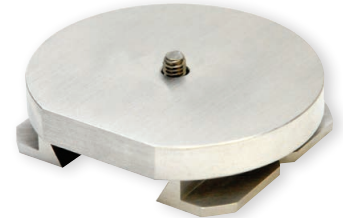


DOVETAIL STAGE ADAPTER FOR JEOL SEM

5800 / 5900 / 5910 / 6460 / 6480 / 6490 / 6610

Aluminum Dovetail Stage Adapter compatible with the JEOL SEMs listed above. Can be used with any of the Modular SEM Specimen Holders if the SEM stage travel permits this. Includes M4 screw.

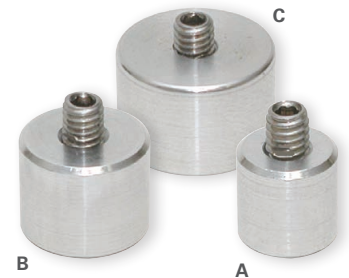
15396 Dovetail Stage Adapter for JEOL SEM 6400 / 5800..... each



CYLINDER ADAPTER FOR JEOL HOLDERS

Made of aluminum in 3 sizes, Ø9.5 x 10mm, Ø12.2 x 10mm, Ø15 x 10mm with M4. Used directly on JEOL holders. Can be used with any of the modular SEM specimen holders.

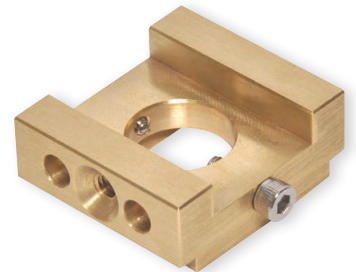
(A) 15367-25 Ø9.5mm JEOL Cylinder Mount Adapter each
(B) 15367-40 Ø12.2mm JEOL Cylinder Mount Adapter each
(C) 15367-20 Ø15mm JEOL Cylinder Mount Adapter each



DOVETAIL STAGE ADAPTER FOR ZEISS/LEO SEM

The solid brass dovetail for the ZEISS/LEO SEMs is fully compatible with the ZEISS/LEO dovetail used on the stage or stage height adapters. Two Button style adapters are available to connect the Modular SEM Specimen Holders. The Short Adapter Button (15372) is used for the smaller specimen holders only, whereas the Extended Adapter Button (15372-10) can be used with all Modular SEM Specimen Holders. See page 4 for Adapter Buttons details.

15397 Dovetail Stage Adapter for ZEISS/LEO SEM..... each



STAGE ADAPTERS FOR AMRAY, ISI/ABT/TOPCON, CAMSCAN/TESCAN SEM

Made of aluminum, Ø16 x 25mm with M4 screw. Can be used with any of the Modular SEM Specimen Holders.

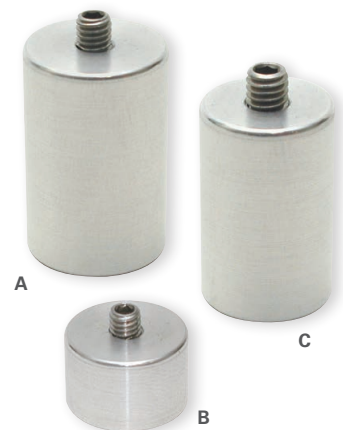
(A) 15367-10 Stage Adapter for Amray SEM..... each

Made of aluminum, Ø15 x 10mm with M4 screw. Can also be used on JEOL stage adapters or specimen holders which accommodate the 15mm cylinder stub. Can be used with any of the Modular SEM Specimen Holders.

(B) 15367-20 Stage Adapter for ISI/ABT/Topcon SEM each

Made of aluminum, Ø12.5 x 20mm with M4 screw. Used with the 12.7mm stage adapter found on the larger stages. Can be used with any of the Modular SEM Specimen Holders.

(C) 15367-30 Stage Adapter for CamScan/Tescan SEM each



PELCO® MODULAR SEM SPECIMEN HOLDER SYSTEM



JEOL NEOSCOPE STAGE ADAPTER KIT

Aluminum stage plate with two adjustable height pillars and locking nut. Includes height gauge. Can be used with all modular SEM holders with 35 x 35mm x-y movement that do not exceed total assembly height of 50mm.

15398	NeoScope Stage Adapter Kit, Includes Base Plate Adapter, 18mm and 25mm Adjustable Height Adapters and Height Gauge	each
15398-10	NeoScope Stage Base Adapter Plate Only	each
15365-2	18mm Adjustable Height Pillar with Locking Nut	each
15374-2	25mm Adjustable Height Pillar with Locking Nut	each
15373-22	M6 Locking Nut, Aluminum	each

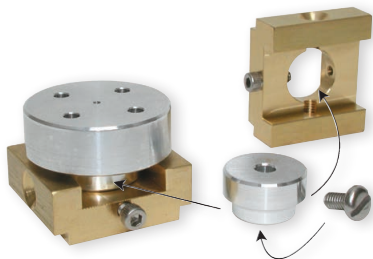
ADAPTER BUTTONS FOR DOVETAIL STAGE ADAPTERS



SHORT BUTTON FOR DOVETAIL STAGE ADAPTERS

The 14mm diameter Short Button is needed to connect small Modular SEM Specimen Holders or Stub Adapters to the Dovetail Stage Adapters (15371 or 15397). It allows easy and quick exchange of Modular SEM Specimen Holders. The Short Button is mounted on the SEM specimen holder and secured on the Dovetail Adapter with a screw against the flat side. Supplied with M4 screw.

15372	Short Button with M4 Screw	each
-------	----------------------------------	------

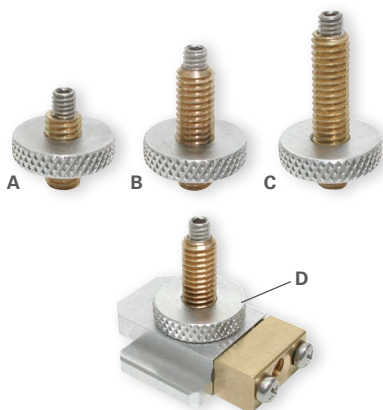


EXTENDED BUTTON FOR DOVETAIL STAGE ADAPTERS

The Extended Button can be used to mount all Modular SEM Specimen Holders to the Dovetail Stage Adapters (15371 or 15397) and allows for easy and quick exchange of the Modular SEM Specimen Holders. Supplied with M4 screw.

15372-10	Extended Button with M4 Screw	each
----------	-------------------------------------	------

STUB EXTENSIONS FOR T-BASE AND DOVETAIL STAGE ADAPTERS



STUB EXTENSIONS FOR T-BASE AND DOVETAIL STAGE ADAPTERS

Stub Extensions are compatible with Hitachi stages and sample holders. They are available in three heights (12, 18 and 25mm) and are used on the Hitachi T-Base and Dovetail Stage Adapters to increase the height of the assembly. Can be used with any of the Modular SEM Specimen Holders or with Hitachi mounts with M4 thread. M6 thread on brass extensions and M4 thread on top. Stub extensions can be stacked. Made of brass with stainless steel M4, complete with aluminum locking nut. Short Button (15372) is needed when used with the Dovetail Stage Adapters (15371 or 15397).

(A)	15373-2	Short Stub Extension, 12mm, Includes Locking Nut	each
(B)	15365-2	Medium Stub Extension, 18mm, Includes Locking Nut	each
(C)	15374-2	Long Stub Extension, 25mm, Includes Locking Nut	each
(D)	15373-22	M6 Locking Nut for Stub Extensions, Aluminum	each

PIN STUB TO M4 ADAPTERS

Standard low profile, short and long pin with M4 threads to convert any of the Modular SEM Specimen Holders into a pin stub type holder. Can be used on Cambridge, Leica, CamScan, Tescan, and FEI/Philips SEMs. Short pin for Zeiss/LEO SEMs, long pin for AMRAY SEMs. This arrangement will add height to the total assembly and is not recommended for larger specimen holders or heavy specimens.



15319-9	Short Pin Stub Adapter to M4, 6mm (0.24") Pin Length	each
15319	Standard Low-Profile Pin Stub Adapter to M4, 9.5mm (0.34") Pin Length	each
15319-2	Long Pin Stub Adapter to M4, 14.75mm (0.58") Pin Length	each

INTERCHANGEABLE MODULAR SEM SPECIMEN HOLDERS

SINGLE CLIP FLAT HOLDER

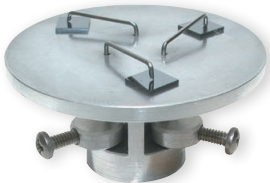
This specimen holder is made of aluminum with spring-loaded clamping and grounding pin. Accommodates a sample thickness up to 3mm. Pin provides minimal surface clamping area and grounding on the imaged surface. Short Button (15372) is needed when used with the Dovetail Stage Adapters (15371 or 15397).



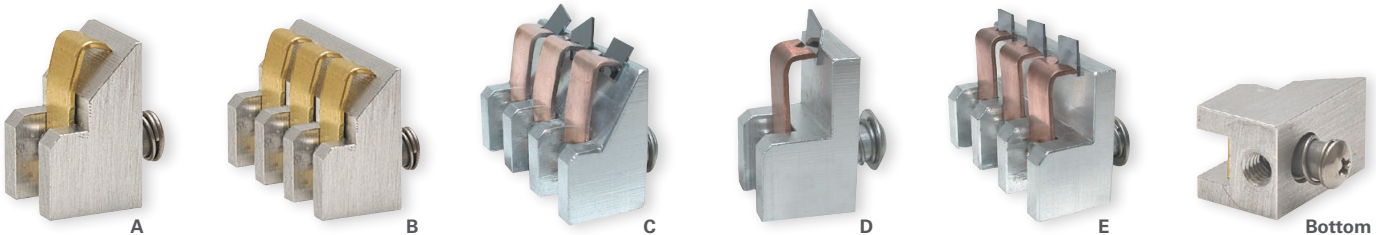
15375-2	Single Clip Flat Holder, M4 Mount	each
---------	---	------

TRIPLE CLIP FLAT HOLDER

This specimen holder is made from aluminum with spring-loaded clamping and grounding pin. Accommodates three samples with thickness up to 3mm. The pins provide minimal surface clamping area and grounding on the imaged surface. Short Button (15372) is needed when used with the Dovetail Stage Adapters (15371 or 15397).



15376-2	Triple Clip Flat Holder, M4 Mount	each
---------	---	------



CROSS SECTION HOLDERS

Cross Section Holders are made of aluminum with spring-loaded brass clamping and grounding clips and hold samples at angles of 45°, 70° or 90°. Clip width is 6.35mm. Each accommodates a sample thickness up to 11mm. Clips provide minimal surface clamping area and grounding on the imaged surface. Extended Button (15372-10) is needed when used with the Dovetail Stage Adapters (15371 or 15397).

(A)	15460	45° Single Clip Cross Section Holder, M4	each
(B)	15461	45° Triple Clip Cross Section Holder, M4	each
(C)	15379-2	70° Triple Clip Cross Section Holder, M4	each
(D)	15378-2	90° Single Clip Cross Section Holder, M4	each
(E)	15380-2	90° Triple Clip Cross Section Holder, M4	each

PELCO® MODULAR SEM SPECIMEN HOLDER SYSTEM



ADJUSTABLE ANGLE CROSS SECTION HOLDER

This specimen holder holds thin or flat samples up to 6.35mm (1/4"). Adjustable angle from 0-180°. Made of non-magnetic stainless steel. Extended Button (15372-10) is needed when used with the Dovetail Stage Adapters (15371 or 15397). Overall height is 30mm (1.2") from the pivot point. The clamping part is a 16mm (0.62") cube without thumb screws.

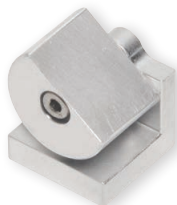
15325-4 Adjustable Angle Cross Section, M4 Mounteach



ADJUSTABLE PROFILE HOLDER

Designed to adjust the exact viewing angle for cross section made from wafers or other thin specimens up to a thickness of 3.2mm (1/8"). Angle adjustment range 0-90°. Made of aluminum with stainless steel allen screw. Allen wrench included. Extended Button (15372-10) is needed when used with the Dovetail Stage Adapters (15371 or 15397).

15356-4 Adjustable Profile Holder, M4 Mounteach



COMPACT VARIABLE TILT MOUNT

This Compact Variable Tilt Specimen Mount allows for easy mounting and tilting small samples from 0° to 90° and SEM investigation with small working distances. Markings for 30°, 45°, 70° and 90°. Table size is 11 x 14mm (0.46" x 0.55"). Overall size is 14 x 14.3 x 14.5mm (0.55" x 0.56" x 0.57"). Made of aluminum with stainless steel screw. Allen wrench included. Extended Button (15372-10) is needed when used with the Dovetail Stage Adapters (15371 or 15397).

15439 Compact Variable Tilt Mount, M4 Mount.....each



VARIABLE TILT SPECIMEN HOLDER FOR PIN MOUNTS

Accommodates pin mounts up to 18mm (0.7") diameter or with a size up to 26 x 20mm. Tilts 0 - 90° with 10° markings. Additional markings for 30°, 45°, and 70°. Tilt table size is 26 x 20mm, overall size is 33 x 20 x 19mm H. Made of aluminum with stainless steel screws. Allen wrench included. Extended Button (15372-10) is needed when used with the Dovetail Stage Adapters (15371 or 15397).

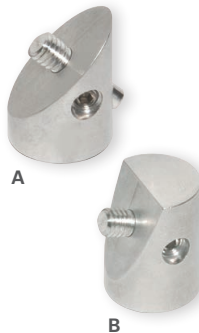
15450-4 Variable Tilt Specimen Holder for Pin Mounts, M4 Mount.....each



VARIABLE TILT SPECIMEN HOLDER FOR HITACHI M4 MOUNTS

Accommodates Hitachi 15mm cylinder mount with M4 thread. Tilts 0 - 90° with 10° markings. Additional markings for 30°, 45°, and 70°. Tilt table size is 26 x 20mm, overall size is 33 x 20 x 19mm H. Made of aluminum with stainless steel screws. Allen wrench included. Extended Button (15372-10) is needed when used with the Dovetail Stage Adapters (15371 or 15397).

15451-4 Variable Tilt Specimen Holder for Hitachi M4 Mounts, M4 Mounteach



PRE-TILT SPECIMEN HOLDERS FOR HITACHI M4 MOUNTS

45° or 70° Pre-Tilt Holder for Hitachi Mounts and Pin Stubs accept 15mm Hitachi mounts on a pin with M4 thread. Pin can be rotated and fixed for optimum position. When the pin with M4 thread is removed, this holder also accepts a standard 12.7mm (1/2") pin stub with 3.2mm (1/8") pin. 45° gives higher SE signal without tilting the specimen stage. 70° EBSD Pre-Tilt Holder without tilting the specimen stage. Made of machined aluminum with stainless steel Allen set screw. Allen wrench included. Extended Button (15372-10) is needed when used with the Dovetail Stage Adapters (15371 or 15397).

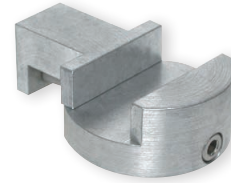
(A) 15428-45 45° Pre-Tilt Holder for Hitachi Mounts and Pin Stubs, M4each

(B) 15428-70 70° EBSD Pre-Tilt Holder for Hitachi Mounts and Pin Stubs, M4each

INTERCHANGEABLE MODULAR SEM SPECIMEN HOLDERS

MICRO VISE HOLDER

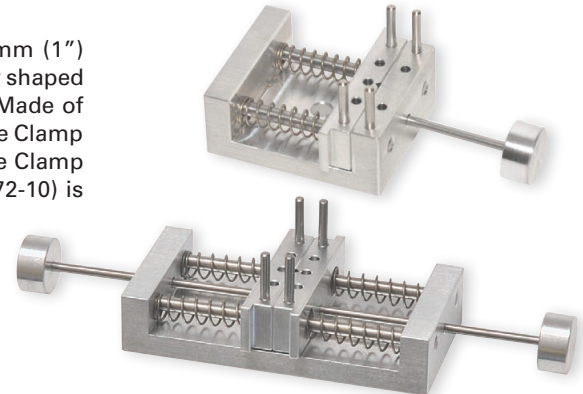
Holds a variety of specimens. The maximum gap is 11mm (7/16"). The jaws are 25.4mm (1") wide. Made of aluminum with stainless steel screw. Allen wrench included. Extended Button (15372-10) is needed when used with the Dovetail Stage Adapters (15371 or 15397).



15340-4 Micro Vise Holder, M4 Mount..... each

SPRING-LOADED VISE CLAMPS

Spring-Loaded Vise Clamp for samples up to 12.7mm (1/2"). The jaws are 25mm (1") wide. Jaws also accommodate 1/16" x 1/2" stainless steel pins for more awkwardly shaped samples. 4 pins are included. Removable pushrod for easy loading is provided. Made of machined aluminum with stainless steel pins and springs. Overall size of Small Vise Clamp without pushrod 30 x 25 x 12.5mm (1.18" x 1" x 1/2"). Overall size of Regular Vise Clamp without pin and push rods 50 x 25 x 15mm (2 x 1 x 5/8"). Extended Button (15372-10) is needed when used with the Dovetail Stage Adapters (15371 or 15397).



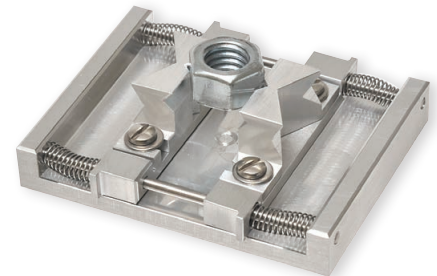
15341-4 Small Spring-Loaded Vise Clamp, M4 Mount.....each

15343 Regular Spring-Loaded Vise Clamp, M4 Mount.....each

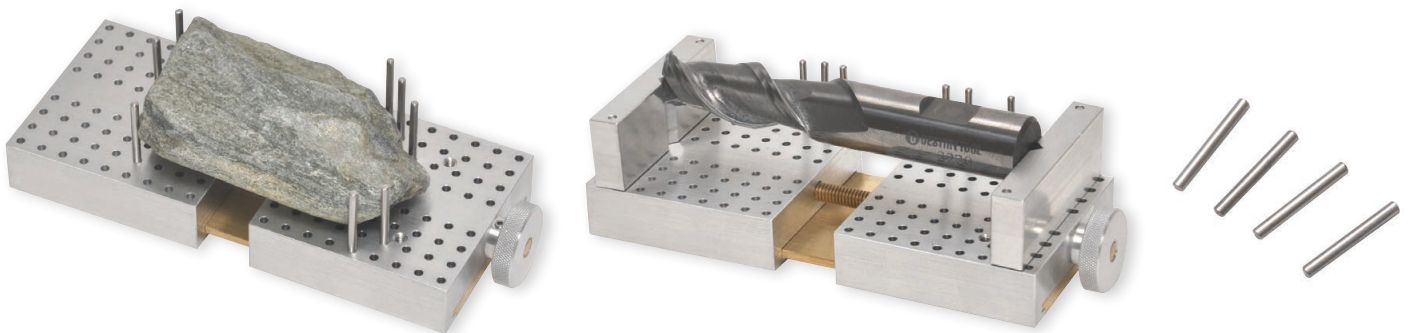
15341-20 Replacement Pins for Vise Clamp, 1/2" Long pkg/10

UNIVERSAL SPRING-LOADED VISE

Spring-loaded vise clamp with reversible jaws for an opening up to 38mm. The universal jaws have special slots to firmly hold round samples of various diameters both horizontally and vertically. Maximum width of the jaws is 35mm. Material: machined aluminum with stainless steel springs, rods, screws, washers, and brass sliders. Overall size of the vise clamp is 67 x 52 x 20mm (2.64" x 2" x 0.8"). M4 threaded hole in base. Extended Button (15372-10) is needed when used with the Dovetail Stage Adapters (15371 or 15397).



15342-4 Universal Spring-Loaded Vise with Reversible Clamps, M4 Mount..... each



PELCO® LARGE UNIVERSAL VISE CLAMP

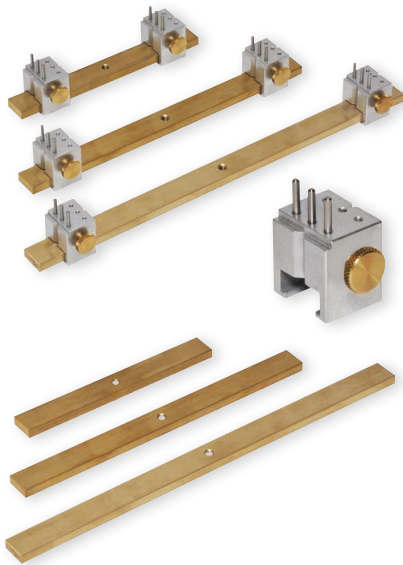
The large and extremely versatile vise clamp is intended for large and heavy samples or awkwardly shaped samples. Will clamp samples between 0-90mm. The two bases move 0-25mm. The array of holes take precision stainless steel 1/16" pins (10 pins are included) for either clamping the sample or for positioning the vise clamps (included). Overall size is 40W x 90L x 25mmH (1.6" x 3.5" x 1"). M4 threaded hole in the base. Extended Button (15372-10) is needed when used with the Dovetail Stage Adapters (15371 or 15397).

15475-4 PELCO® Large Universal Vise Clamp, M4, Includes 10 Pins..... each

15475-10 Replacement Vise Clamps for Large Universal Vise pkg/2

15475-20 Replacement Pins for Large Universal Vise, 3/4" Long pkg/10

PELCO® MODULAR SEM SPECIMEN HOLDER SYSTEM



PELCO® BAR CLAMP VISE 4", 6", 8"

The PELCO® Bar Clamp Vise is available in three lengths; 102mm (4"), 152mm (6") and 203mm (8") with the same clamps for each version. This bar type clamp can accommodate specimens up to 72mm (3"), 127mm (5") and 178mm (7") in length respectively. The jaws are reversible, offering different clamping options and they operate independently anywhere on the clamping bar. This will allow for positioning the region of interest of the specimen within the travel range of the SEM stage. Stainless steel 1/16" pins (6 pins are included) can be placed on the clamps for awkwardly shaped samples. Clamping bars and clamps can be purchased additionally to make up the best functional set for the job at hand. Made of vacuum grade aluminum with brass bar and brass thumbscrews and stainless steel type 316 dowels. Extended Button (15372-10) is needed when used with the Dovetail Stage Adapters (15371 or 15397).

15477-4	PELCO® Bar Clamp Vise, 102mm (4"), Complete with Bar and Two Clamps, M4.....each
15476-4	PELCO® Bar Clamp Vise, 152" (6"), Complete with Bar and Two Clamps, M4 each
15478-4	PELCO® Bar Clamp Vise, 203mm (8"), Complete with Bar and Two Clamps, M4.....each
15477-10	Additional Clamp for 102mm (4"), 152mm (6") or 203mm (8") Bar each
15477-40	Additional 102mm (4") Bar, M4..... each
15476-60	Additional 152mm (6") Bar, M4..... each
15478-80	Additional 203mm (8") Bar, M4..... each
15341-20	Replacement Pins for Bar Clamp, 1/2" Long..... pkg/10



MINI PELCO SEMClamp™

Mini PELCO SEMClamp™ on a Ø15 x 10mm M4 cylinder mount. Convenient for holding flat or thin specimens such as Si chips, wires, foil and small tubes. Made of vacuum grade aluminum with brass screw. Short Button (15372) is needed when used with the Dovetail Stage Adapters (15371 or 15397).

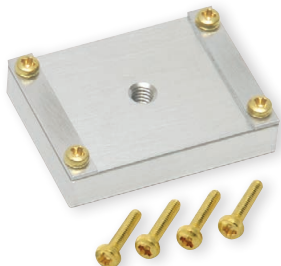
15494	Mini PELCO SEMClamp™ Ø15 x 10mm, M4 Mount.....each
-------	--



SMALL PELCO SEMClamp™

Small PELCO SEMClamp™ holder 15mm (0.6") long with 10mm (0.4") wide clamping area. Convenient holder for clamping down samples up to a thickness of 7mm under the clamping strips. Extended Button (15372-10) is needed when used with the Dovetail Stage Adapters (15371 or 15397). Overall dimensions 23 x 20 x 9mm (0.9"x 0.78"x 0.35"). Made of machined aluminum with brass screws.

15347-4	Small PELCO SEMClamp™ 15 x 10mm, M4 Mount.....each
---------	--



MEDIUM PELCO SEMClamp™

Medium PELCO SEMClamp™ holder 25mm (1") long with 15mm (0.6") wide clamping area. Convenient holder for clamping down samples up to a thickness of 7mm under the clamping strips. Extended Button (15372-10) is needed when used with the Dovetail Stage Adapters (15371 or 15397). Overall dimensions 33 x 25 x 9mm (1.3"x 1"x 0.35"). Made of machined aluminum with brass screws.

15348-4	Medium PELCO SEMClamp™ 25 x 15mm, M4 Mount each
---------	---



RECESSED PELCO SEMClamp™

5mm recess allows for background free imaging and no contact with sample surface in imaging area. Clamping area is 25mm (1") long and 15mm (0.6") wide. Maximum thickness 7mm under the clamping strips. Extended Button Adapter (15372-10) is needed when used with the Dovetail stage adapters (15371 or 15397). Overall dimensions 33 x 25 x 11mm (1.3" x 1" x 0.43"). Material: machined aluminum with brass screws.

15346-4	Recessed PELCO SEMClamp™ 25 x 15mm, M4 Mount each
---------	---

THIN SPECIMEN SPLIT MOUNT HOLDER

Simple but effective design to hold wafers and thin samples up to 3.2mm (1/8"). Ø15 x 10mm. Made of aluminum with stainless steel allen screws. Allen wrench included. Short Button (15372) is needed when used with the Dovetail Stage Adapters (15371 or 15397).

15335-4 Thin Specimen Split Mount Holder, M4 Mount.....each

TUBE / NEEDLE CLAMP

A small tube, needle or wire clamp based on a standard Ø15 x 10mm cylinder mount with M4 thread. Ideal for examining wire cross sections or needle tips. Holds wires, tubes and needles up to Ø2mm (0.008"); hole is 5mm (0.20") deep. Made of vacuum grade aluminum with a stainless steel set screw. Allen wrench included. Short Button (15372) is needed when used with the Dovetail Stage Adapters (15371 or 15397).

15490 Tube / Needle Clamp, M4.....each

SMALL SET SCREW VISE

Small set screw vise with an open slot of 4mm (0.157") wide and 5mm (0.197") deep. Ø15 x 12mm x M4. Made of machined aluminum with stainless steel allen set screw. Allen wrench included. Short Button (15372) is needed when used with the Dovetail Stage Adapters (15371 or 15397).

16335 Small Set Screw Vise, M4each

LARGE SET SCREW VISE

Set screw vise with an open slot of 10mm (0.394") wide x 5mm (0.197") deep. Ø25mm (1") x 10mm (0.394") high. Made of machined aluminum with stainless steel set screw. Allen wrench included.

16371 Large Set Screw Vise, M4.....each

MINI DOUBLE SLOTTED VISE

Double slotted set screw vise with two each 1mm wide x 3mm deep slots to clamp thin specimens or cross sections. Simple but effective design to hold wafers and thin samples up to 1mm (0.039") thick. Dimensions Ø15 x 6mm. Made of aluminum with two stainless steel allen set screws. Allen wrench included. Short Button (15372) is needed when used with the Dovetail Stage Adapters (15371 or 15397).

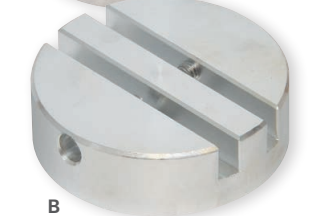
16341 Mini Double Slotted Set Screw Vise, M4each

LARGE DOUBLE SLOTTED VISES

Large double slotted set screw vises, with two each 2.5mm by 5mm deep slots. Clamp thin specimens and cross sections without the need for tape or conductive paint. Made of machined aluminum with two stainless steel allen set screws. Allen wrench included. Short Button (15372) is needed when used with the Dovetail Stage Adapters (15371 or 15397).

(A) 16372 Ø25 x 10mm Large Double Slotted Set Screw Vise, M4.....each

(B) 16312 Ø32 x 10mm Large Double Slotted Set Screw Vise, M4.....each



PELCO® MODULAR SEM SPECIMEN HOLDER SYSTEM

SINGLE PIN STUB HOLDERS

For holding and viewing SEM mounts with the standard 3.2mm pin. Made of aluminum, includes a pin locking screw. Four different heights are available: 10, 25, 38 and 55mm. Short Button (15372) is needed when used with the Dovetail Stage Adapters (15371 or 15397).



(A)	15363-1	Single Pin Stub Holder, Ø15 x 10mm, M4	each
(B)	15387-2	Single Pin Stub Holder, Ø16 x 25mm, M4	each
(C)	15361	Single Pin Stub Holder, Ø16 x 38mm, M4	each
(D)	15364	Single Pin Stub Holder, Ø15 x 55mm, M4	each
	15363-2	Single Pin Stub Holder, Ø15 x 15mm, M4 (not shown)	each



MULTI PIN STUB HOLDERS

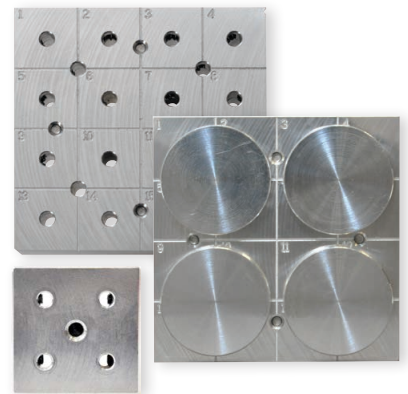
Holders accommodate up to 4, 6, 8, 12, 29 or 49 standard 12.7mm (1/2") pin stubs with 3.2mm (1/8") pin. Made of aluminum with stainless steel set screws. Allen wrench included with each holder. Extended Button (15372-10) is needed when used with the Dovetail Stage Adapters (15371 or 15397).

(A)	15310-4	Multi Pin Stub Holder for 4 Pins, Ø31.8 x 11.25mm, M4	each
(B)	15411	Multi Pin Stub Holder for 6 Pins, Ø42 x 10.7mm, M4	each
(C)	15413	Multi Pin Stub Holder for 8 Pins, Ø50 x 10.7mm, M4	each
(D)	15417	Multi Pin Stub Holder for 12 Pins, Ø62 x 10.7mm, M4	each
(E)	15418	Multi Pin Stub Holder for 29 Pins, Ø90 x 5mm (Ø3.5" x 0.2"), M4	each
(F)	15419	Multi Pin Stub Holder for 49 Pins, Ø117 x 5mm (Ø4.6" x 0.2"), M4	each
(G)	15429	45° Multi Pin Stub Holder for 6 Pins, Ø35mm (Ø1 3/8"), M4.....	each

ADP PELCO® Q MULTI HOLDERS

Square PELCO® Q Multi Pin Stub Holders enable easier location of the pin stubs with X-Y stage movements. They have a notch for indexing and lines for alignment when using the square PELCO® Q Pin Stubs. Available for 4, 8, 16, 24, 36 and 48 of the 12.7mm (1/2") pin stubs. The multi holders for 8 or more pin stubs are also compatible with a lower number of 25.4mm (1") pin stubs or a mixture of 12.7 and 25.4mm pin stubs.

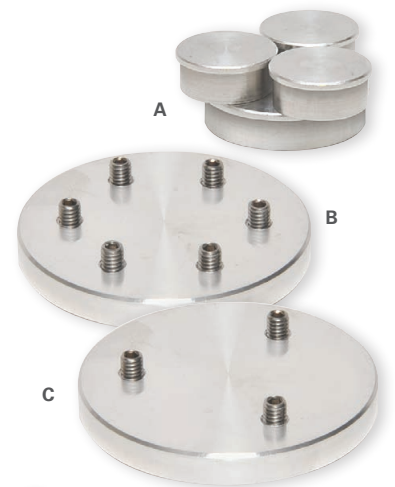
15334-4-22	PELCO® Q Multi Pin Stub Holder for 4 ea 12.7mm (1/2") Pin Stubs, M4.....each
15334-4-33	PELCO® Q Multi Pin Stub Holder for 8 ea 12.7mm (1/2") Pin Stubs, M4.....each
15334-4-44	PELCO® Q Multi Pin Stub Holder for 16 ea 12.7mm (1/2") Pin Stubs, M4...each
15334-4-55	PELCO® Q Multi Pin Stub Holder for 24 ea 12.7mm (1/2") Pin Stubs, M4...each
15334-4-66	PELCO® Q Multi Pin Stub Holder for 36 ea 12.7mm (1/2") Pin Stubs, M4...each
15334-4-77	PELCO® Q Multi Pin Stub Holder for 48 ea 12.7mm (1/2") Pin Stubs, M4...each



HITACHI MULTI SPECIMEN MOUNT HOLDERS

A set of useful holders to quickly mount multiple standard Ø15mm Hitachi mounts with M4 thread on a base with M4 thread. Fully compatible with all Hitachi stage adapters using M4 threads and with all PELCO® Modular Stage Adapters. Made of aluminum with stainless steel M4 threads. Extended Button (15372-10) is needed when used with the Dovetail Stage Adapters (15371 or 15397).

(A)	15433	Triple Specimen Holder for 3 Hitachi Mounts, Ø25 x 6mm, M4.....each
(B)	15436	Multiple Specimen Holder for 6 Hitachi Mounts, Ø50 x 6mm, M4each
(C)	15437	Triple Specimen Holder for 3 Hitachi Mounts, Ø50 x 6mm, M4.....each



HITACHI 45° TILT MULTI SPECIMEN MOUNT HOLDERS

Mount multiple standard Ø15mm Hitachi mounts with M4 thread on a base with M4 thread. Fully compatible with all Hitachi stage adapters using M4 threads and with all PELCO® Modular Stage Adapters. 45° tilt for enhanced signal. Made of aluminum with stainless steel M4 threads. Extended Button (15372-10) is needed when used with the Dovetail Stage Adapters (15371 or 15397).

(D)	15430-3	45° Tilt Triple Specimen Holder for 3 Hitachi Mounts, Ø25 x 14mm, M4each
(E)	15430-6	45° Tilt Multiple Specimen Holder for 6 Hitachi Mounts, Ø35 x 14mm, M4.....each



MULTI HOLDER FOR JEOL STUBS

Holds up to five 9.5mm JEOL cylinder mounts. Made of aluminum with stainless steel set screws. Allen wrench included. Extended Button (15372-10) is needed when used with the Dovetail Stage Adapters (15371 or 15397).

15315-4	Multi Specimen Holder for JEOL Stubs, M4.....each
---------	---



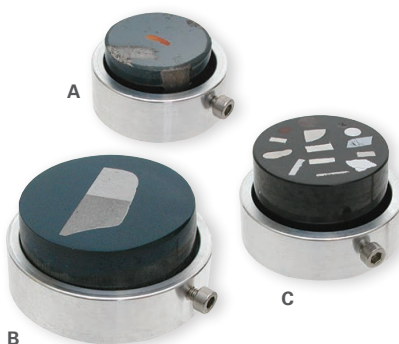
JEOL OR ISI/ABT/TOPCON MOUNTS TO HITACHI M4

Small cylinder mount adapter accommodates JEOL or ISI/ABT/Topcon cylinder mounts up to 15mm diameter. Enables the use of Ø9.5 and Ø12.2mm JEOL or Ø15mm ISI/ABT/Topcon cylinder mounts on Hitachi M4. Made from aluminum with stainless steel screw, Allen wrench included. Extended Button (15372-10) is needed when used with the Dovetail Stage Adapters (15371 or 15397).

15401	Adapter Holder for Cylinder Mounts, M4 each
-------	---



PELCO® MODULAR SEM SPECIMEN HOLDER SYSTEM



METALLOGRAPHIC MOUNT HOLDERS

Specimen holders for 1" (25mm) to 2" (50mm) metallographic mounts. Made of aluminum with stainless steel allen screw. Allen wrench included with each. Extended Button (15372-10) is needed when used with the Dovetail Stage Adapters (15371 or 15397).

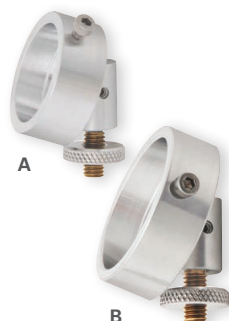
- (A) 15403 Metallographic Mount Holder for 1" (25mm) Mounts, M4.....each
- (B) 15404 Metallographic Mount Holder for 1.25" (32mm) Mounts, M4.....each
- (C) 15405 Metallographic Mount Holder for 1.5" (40mm) Mounts, M4.....each
- 15406 Metallographic Mount Holder for 2" (50mm) Mounts, M4 (not shown).....each

CYLINDER HOLDER, 22mm (7/8")



Specimen holder for cylinders up to 22mm (7/8") diameter. Made of aluminum with stainless steel allen screw. Allen wrench included. Extended Button (15372-10) is needed when used with the Dovetail Stage Adapters (15371 or 15397).

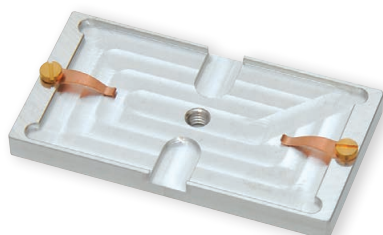
- 15402 Specimen Holder for Cylinders up to 22mm (7/8"), M4each



EBSD HOLDERS

70° pre-tilt EBSD holder for standard 1" (25mm) or 1.25" (32mm) embedding mounts. With this mount there is no need to tilt the SEM specimen stage which avoids drift and enables quick setup for EBSD analysis. M4 compatible thread in base. Made of vacuum grade aluminum with stainless steel set screws and allen key. Extended Button (15372-10) is needed when used with the Dovetail Stage Adapters (15371 or 15397).

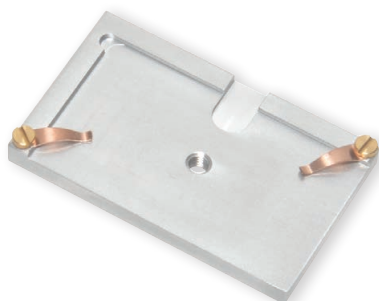
- (A) 15327-4 EBSD Holder for 1" (25mm) Mounts, 70° Pre-Tilt, M4each
- (B) 15328-4 EBSD Holder for 1.25" (32mm) Mounts, 70° Pre-Tilt, M4each



SINGLE GEOLOGICAL THIN SECTION HOLDER

Holds a standard geological thin section or petrographic slide of up to 47 x 27mm (compatible with 45 x 25mm, 46 x 26mm, 46 x 27mm, and 47 x 27mm). 2 clips are provided for secure holding. Tweezer inserts enable easy loading. Overall dimensions are 55 x 30 x 8mm. Made of aluminum with copper clips and brass screws. Extended button (15372-10) is needed when used with the Dovetail Stage Adapters (15371 or 15397).

- 15341-4 Single Geological Thin Section Holder, M4 Cylinder Mount.....each



VARIABLE SIZE GEOLOGICAL THIN SECTION HOLDER

This variable size geological thin section holder holds either standard petrographic slides of up to 48 x 28mm or slides from 40 x 20mm to 75 x 25mm. Two clips are provided for secure holding. Tweezers insert enables easy loading. Overall dimensions are 51 x 32 x 8mm. Material: vacuum grade aluminum with copper clips and brass screws. Extended Button (15372-10) is needed when used with the Dovetail Stage Adapters (15371 or 15397).

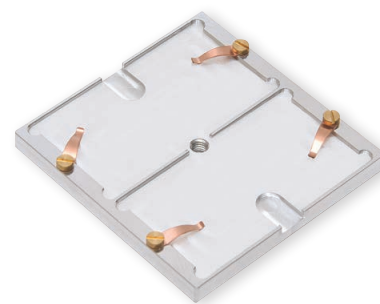
- 15435-4 Variable Size Geological Thin Section Holder, M4 Cylinder Mounteach

INTERCHANGEABLE MODULAR SEM SPECIMEN HOLDERS

DUAL GEOLOGICAL THIN SECTION HOLDER

Holds two standard geological thin sections or petrographic slides of up to 47 x 27mm (compatible with 45 x 25mm, 46 x 26mm, 46 x 27mm, and 47 x 27mm). Tweezer inserts enable easy loading. Clips are provided for secure holding. Overall dimensions are 55 x 58 x 8mm. Made of aluminum with copper clips and brass screws. Extended button (15372-10) is needed when used with the Dovetail Stage Adapters (15371 or 15397).

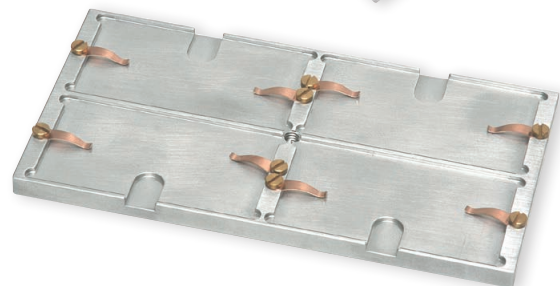
15432-4 Dual Geological Thin Section Holder, M4 Cylinder Mount.....each



QUADRUPLE GEOLOGICAL THIN SECTION HOLDER

Holds four standard geological thin sections or petrographic slides of up to 47 x 27mm (compatible with 45 x 25mm, 46 x 26mm, 46 x 27mm, and 47 x 27mm). Tweezer inserts enable easy loading. Clips are provided for secure holding. Overall dimensions are 107 x 58 x 8mm. Made of aluminum with copper clips and brass screws. Extended button (15372-10) is needed when used with the Dovetail Stage Adapters (15371 or 15397).

15434-4 Dual Geological Thin Section Holder, M4 Cylinder Mount.....each



ROUND BULK SPECIMEN HOLDER

The bulk specimen holder holds irregular and round specimens up to a diameter of 32mm (1-1/4"). Made of aluminum with two sets of stainless steel allen screws. Allen wrench included. Extended Button (15372-10) is needed when used with the Dovetail Stage Adapters (15371 or 15397).

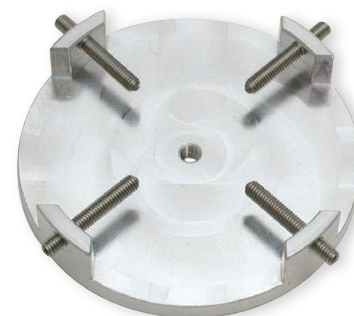
15308-4 Round Bulk Specimen Holder, M4each



LARGE ROUND BULK SPECIMEN HOLDER

The large bulk specimen holder holds larger irregular and round specimens up to a diameter of 51mm (2"). Made of aluminum with two sets of stainless steel allen screws. Allen wrench included. Extended Button (15372-10) is needed when used with the Dovetail Stage Adapters (15371 or 15397).

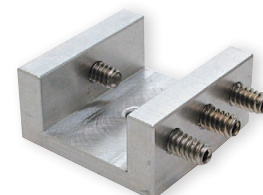
15423 Large Round Bulk Specimen Holder, M4each



STRAIGHT BULK SPECIMEN HOLDER

Versatile specimen holder to clamp irregular or long shaped specimens. Opening is 15.9W x 25.4L x 9.5mm D (5/8" x 1" x 3/8"). Made of aluminum with stainless steel allen screws. Allen wrench included. Extended Button (15372-10) is needed when used with the Dovetail Stage Adapters (15371 or 15397).

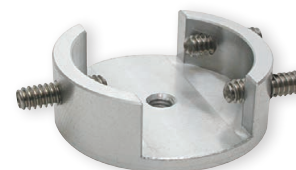
15320-4 Straight Bulk Specimen Holder, M4each



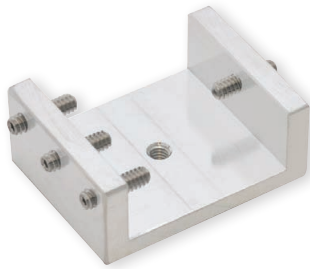
MULTI-PURPOSE SPECIMEN HOLDER

Accepts up to 25.4mm (1") diameter specimens. The slotted design also allows for clamping elongated or rod shaped specimens. Made of aluminum with stainless steel allen screw. Allen wrench included. Extended Button (15372-10) is needed when used with the Dovetail Stage Adapters (15371 or 15397).

15305-4 Multipurpose Specimen Holder, M4.....each



PELCO® MODULAR SEM SPECIMEN HOLDER SYSTEM



LARGE BULK SPECIMEN HOLDER

Opening is 32mm (1 1/4") wide x 32mm (1 1/4") long x 13mm (1/2") deep. Made of machined aluminum with stainless steel allen set screws. Allen wrench included. Extended Button (15372-10) is needed when used with the Dovetail Stage Adapters (15371 or 15397).

15321-4 Large Bulk Specimen Holder, M4.....each



X-LARGE BULK SPECIMEN HOLDER

Opening is 52mm (2") wide x 40mm (1 1/2") long x 13mm (1/2") deep. Holds specimens up to 2". Made of machined aluminum with stainless steel allen set screws. Allen wrench included. Extended Button (15372-10) is needed when used with the Dovetail Stage Adapters (15371 or 15397).

15322-4 X-Large Bulk Specimen Holder, M4.....each



XX-LARGE BULK SPECIMEN HOLDER

Opening is 80mm (3 1/8") wide x 48mm (1 7/8") long x 13mm (1/2") deep. Holds specimens up to 3". Made of machined aluminum with stainless steel allen set screws. Allen wrench included. Extended Button (15372-10) is needed when used with the Dovetail Stage Adapters (15371 or 15397).

15323-4 XX-Large Bulk Specimen Holder, M4..... each



45° / 90° COMBINED SPECIMEN HOLDER

Combined specimen holder for 90° cross sections of wafers or thin samples up to 6.35mm (1/4") and a pin stub at 45°. Made of aluminum with stainless steel set screws. Allen wrench included. Extended Button (15372-10) is needed when used with the Dovetail Stage Adapters (15371 or 15397).

15358-4 40° / 90° Combination Holder, M4 each



TEM GRID HOLDER FOR 4 GRIDS

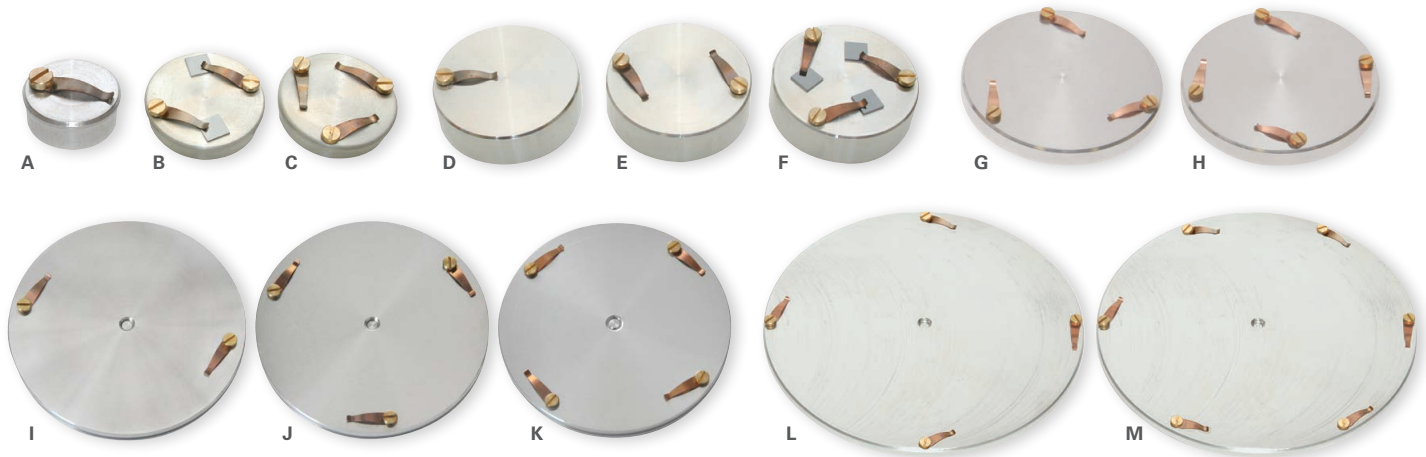
This TEM grid holder holds up to 4 TEM grids. It enables imaging and analyzing specimens on TEM grids in the SEM. For EDS applications it is beneficial to place thin films on a TEM grid or small particles on a TEM grid with a support film. This can significantly reduce background in the EDS spectrum and increase detection limits of the EDS detector. Opening angle on the holes in the top and base are 120° to reduce electron scattering and improve X-ray collection. Overall diameter is 18mm (0.7"), overall height is approximately 25mm (1") with a stand-off pin mounted on a Ø15 x 10mm x M4 Hitachi mount. The stand-off pin minimizes electron and X-ray scattering contribution from the stage. TEM grid locations are numbered. Made of vacuum grade aluminum with brass screw.

15469-15 TEM Grid Holder for 4 Grids, M4..... each

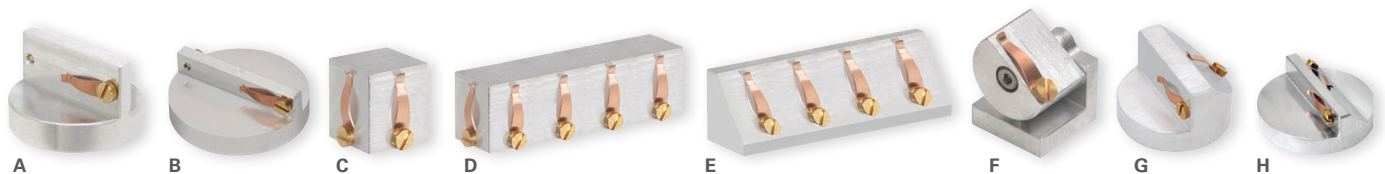
INTERCHANGEABLE MODULAR SEM SPECIMEN HOLDERS

PELCO SEMClip™ CYLINDER MOUNTS

The PELCO SEMClip™ mounts can be used to hold flat thin samples with a thickness of 2mm. Made of aluminum with copper spring clips. Extended Button (15372-10) is needed when used with the Dovetail Stage Adapters (15371 or 15397).

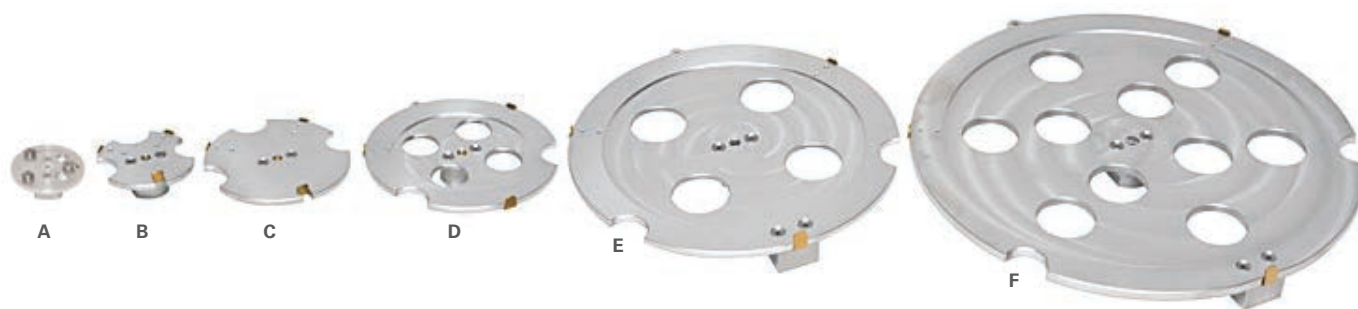


(A)	16324-10	SEMClip™ M4 Cylinder Mount, Ø15 x 6mm, 1 Clip.....	each
	16327-10	SEMClip™ M4 Cylinder Mount, Ø25 x 6mm, 1 Clip (not shown).....	each
(B)	16327-20	SEMClip™ M4 Cylinder Mount, Ø25 x 6mm, 2 Clips.....	each
(C)	16327-30	SEMClip™ M4 Cylinder Mount, Ø25 x 6mm, 3 Clips.....	each
(D)	16326-10	SEMClip™ M4 Cylinder Mount, Ø32 x 10mm, 1 Clip.....	each
(E)	16326-20	SEMClip™ M4 Cylinder Mount, Ø32 x 10mm, 2 Clips.....	each
(F)	16326-30	SEMClip™ M4 Cylinder Mount, Ø32 x 10mm, 3 Clips.....	each
	16328-10	SEMClip™ M4 Cylinder Mount, Ø50 x 6mm, 1 Clip (not shown).....	each
	16328-20	SEMClip™ M4 Cylinder Mount, Ø50 x 6mm, 2 Clips (not shown).....	each
(G)	16328-30	SEMClip™ M4 Cylinder Mount, Ø50 x 6mm, 3 Clips.....	each
(H)	16328-40	SEMClip™ M4 Cylinder Mount, Ø50 x 6mm, 4 Clips.....	each
	16328-80	SEMClip™ M4 Cylinder Mount, Ø50 x 6mm, 8 Clips (not shown).....	each
(I)	16114-4-20	SEMClip™ M4 Cylinder Mount, Ø63 x 4.5mm, 2 Clips.....	each
(J)	16114-4-30	SEMClip™ M4 Cylinder Mount, Ø63 x 4.5mm, 3 Clips.....	each
(K)	16114-4-40	SEMClip™ M4 Cylinder Mount, Ø63 x 4.5mm, 4 Clips.....	each
	16116-4-20	SEMClip™ M4 Cylinder Mount, Ø100 x 4.5mm, 2 Clips (not shown).....	each
(L)	16116-4-40	SEMClip™ M4 Cylinder Mount, Ø100 x 4.5mm, 4 Clips.....	each
(M)	16116-4-60	SEMClip™ M4 Cylinder Mount, Ø100 x 4.5mm, 6 Clips.....	each



(A)	16356-20	SEMClip™ M4 Cylinder Mount, Ø25 x 16mm, Double 90°, 2 Clips.....	each
(B)	16314-20	SEMClip™ M4 Cylinder Mount, Ø32 x 12mm, Double 90°, 2 Clips.....	each
(C)	16241	SEMClip™ M4 Mount, 12 x 12 x 14mm, 90°, 4 Clips.....	each
(D)	16147-4	SEMClip™ M4 Mount, 12 x 48 x 14mm, 45/90°, 10 Clips.....	each
(E)	16155-4	SEMClip™ M4 Mount, 12 x 48 x 14mm, 45/90°, 8 Clips.....	each
(F)	15349-10	SEMClip™ on Compact Variable Tilt M4 Mount 0-90°, Table Size 11 x 14mm, Overall Size 14 x 14.3 x 14.5mm, 1 Clip	each
(G)	16357-20	SEMClip™ M4 Cylinder Mount, Ø25 x 16mm, 45/90°, 2 Clips.....	each
(H)	16315-20	SEMClip™ M4 Cylinder Mount, Ø32 x 12mm, 45/90°, 2 Clips.....	each

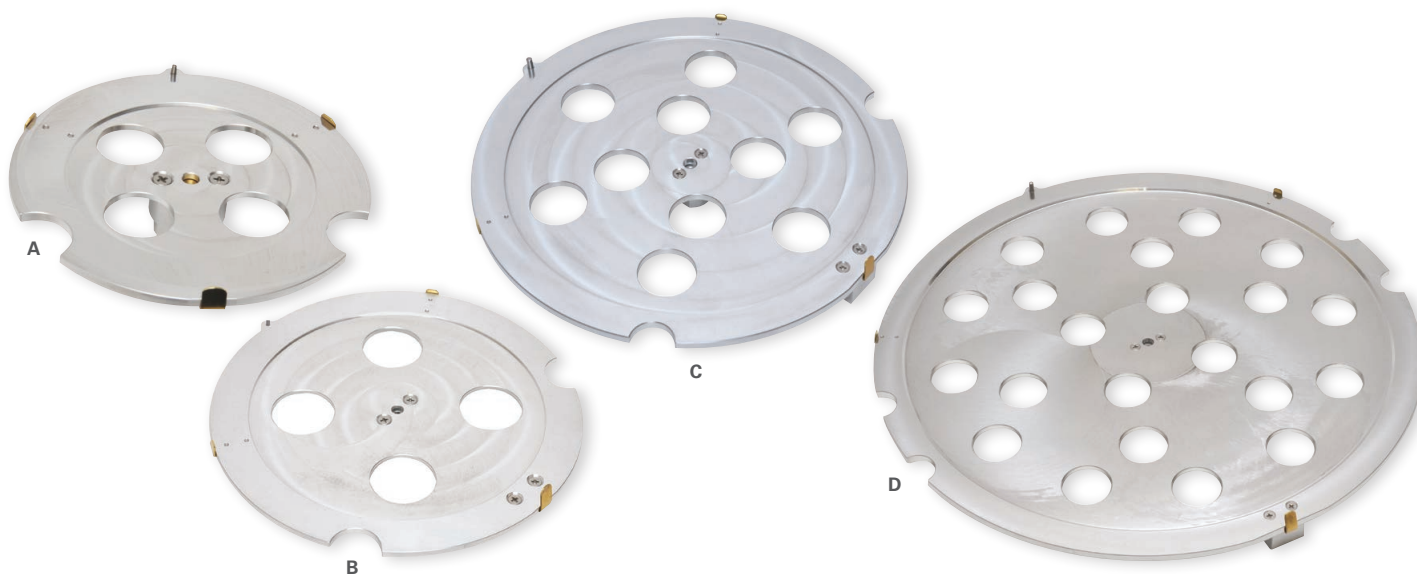
PELCO® MODULAR SEM SPECIMEN HOLDER SYSTEM



WAFER HOLDERS FOR WAFERS WITH A FLAT; 1-8"

Seven wafer holders for diameters varying from 1"- 8" are available. Made of aluminum with brass clips. Each wafer holder has two fixed clips and one spring-loaded clip to secure the wafer on the holder (stainless steel pegs on the 25mm (1") holder. Cut-outs are provided for easy wafer removal. The 1" Wafer Holder uses two fixed tapered cones and one spring loaded tapered cone to hold the wafer. Extended Button (15372-10) is needed when used with the Dovetail Stage Adapters (15371 or 15397).

15388	(A)	Wafer Holder for 25mm (1"), M4.....	each
15390	(B)	Wafer Holder for 51mm (2"), M4.....	each
15369	(C)	Wafer Holder for 76mm (3"), M4.....	each
15389	(D)	Wafer Holder for 100mm (4"), M4.....	each
15382	(E)	Wafer Holder for 150mm (6"), M4.....	each
15383	(F)	Wafer Holder for 200mm (8"), M4.....	each



WAFER HOLDERS FOR NOTCH-STYLE WAFERS; 4-12"

Wafer holders for notch style wafers in 4", 6", 8" and 12" are available. Made of aluminum with brass clips. Each wafer holder has two fixed clips, a notch pin and a spring-loaded clip opposite the notch pin to secure the wafer on the holder. Extended Button (15372-10) is needed when used with the Dovetail Stage Adapters (15371 or 15397).

15393	(A)	Wafer Holder for Notch-Style Wafers, 100mm (4"), M4.....	each
15391	(B)	Wafer Holder for Notch-Style Wafers, 150mm (6"), M4.....	each
15395	(C)	Wafer Holder for Notch-Style Wafers, 200mm (8"), M4.....	each
15394	(D)	Wafer Holder for Notch-Style Wafers, 300mm (12"), M4.....	each