

SEM SPECIMEN MOUNT ADAPTERS

Enabling the use of all current style of mounts on all current SEM. Pin mounts, common on FEI/Philips, Zeiss/LEO, Cambridge Instruments, Leica, Amray, Tescan and CamScan, can be used on JEOL, Hitachi and ISI/ABT/Topcon SEMs and vice versa.



PIN MOUNT ADAPTER TO HITACHI M4 OR ISI/ABT/TOPCON MOUNTS

Pin mount adapter, 15 x 10mm H with M4 thread on one side. Enables the use of standard pin mount with 1/8" (3.2mm) pin on Hitachi or ISI/ABT/Topcon SEMs. Made from aluminum with stainless set screw. Allen wrench included.

15363-1 Hitachi Single Pin Stub Holder, Ø15 x 10mm H, M4each



PIN MOUNT ADAPTERS TO HITACHI M4 THREAD (HEIGHT EXTENDERS)

For holding and viewing SEM mounts with the standard 3.2mm pin. Made of aluminum, includes a pin locking screw. Four different heights are available: 10, 25, 38 and 55mm. They enable the use of standard pin mounts with 3.2mm (1/8") pin on Hitachi M4 thread.

Pin mount style stage used on FEI/Philips, Zeiss/LEO/, Cambridge, Leica, Tescan, CamScan and Amray SEMs. They can also be stacked to make them higher.

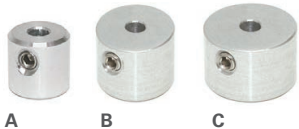
- (A) 15387-2 Single Pin Stub Holder, Ø16 x 25mm, M4 each
- (B) 15361 Single Pin Stub Holder, Ø16 x 38mm, M4 each
- (C) 15364 Single Pin Stub Holder, Ø16 x 55mm, M4 each
- 15363-2 Single Pin Stub Holder, Ø15 x 15mm, M4 (not shown) each



PELCO® PIN STUB EXTENDER

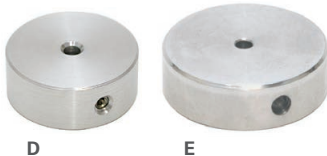
12.5mm (1/2") high, pin stub extender allows bringing pin stubs and pin stub sample holders closer to the pole piece without moving the SEM sample stage. Multiple extenders are stackable. Compatible with all standard 3.2mm (1/8") pin stubs or pin stub SEM holders with maximum pin length of 10mm (0.4"). Made of vacuum grade aluminum with stainless steel allen set screw. Allen key included

15318 PELCO® Pin Stub Extender, 12.5mm (1/2"), 3.2mm (1/8") pin each



PIN MOUNT ADAPTERS TO JEOL CYLINDER MOUNTS

Enables the use of standard pin mount with 1/8" (3.2mm) pin on JEOL SEMs. Made from aluminum with stainless set screw. Allen wrench included.



- (A) 15362 Pin Mount Adapter to JEOL Ø9.5mm x 9.5mm H Mount..... each
- (B) 15362-12 Pin Mount Adapter for JEOL Ø12.2mm x 10mm H Mount each
- (C) 15362-15 Pin Mount Adapter to JEOL Ø15 x 10mm H Mount each
- (D) 16153-9 Pin Mount Adapter to JEOL Ø25 x 10mm H Mount each
- (E) 16216-9 Pin Mount Adapter to JEOL Ø32 x 10mm H Mount each



HITACHI M4 ADAPTER TO PIN STUB

Hitachi M4 adapter to standard 1/8" (3.2mm) pin stub. Enables the use of Hitachi mounts and specimen holders with M4 thread on SEMs with pin mount holder (FEI/Philips, Zeiss/LEO, Cambridge Instruments, Leica, Amray, Tescan and CamScan). Suitable for larger specimen holders. Pin length 3/8", table diameter 5/8" (15.9mm). Made from Aluminum with stainless steel screw.

15316 Adapter Pin to M4 Threadeach

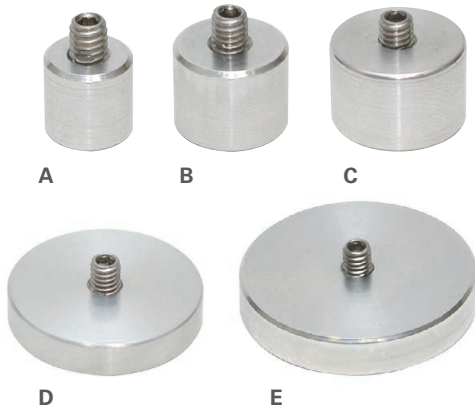
SEM SPECIMEN MOUNT ADAPTERS



HITACHI M4 ADAPTER TO ZEISS PIN STUB

Hitachi M4 adapter to standard 1/8" (3.2mm) pin stub. Enables the use of Hitachi mounts and specimen holders with M4 thread on Zeiss/LEO SEMs and SEM/FIB systems. Suitable for larger specimen holders. Pin length 6mm, table diameter 5/8" (15.9mm). Made from Aluminum with stainless steel screw.

15316-9 Short Adapter Pin to M4 Threadeach



HITACHI M4 ADAPTERS TO JEOL CYLINDER MOUNTS

Hitachi M4 adapter to standard 9.5mm JEOL cylinder mount. Enables the use of Hitachi mounts and PELCO® modular specimen holders with M4 thread on JEOL SEMs. Made from aluminum with stainless set screw.

- (A) 15367-25 M4 Adapter to JEOL Ø9.5 x 9.5mm H Mount..... each
- (B) 15367-40 M4 Adapter to JEOL Ø12.2 x 10mm H Mount..... each
- (C) 15367-20 M4 Adapter to JEOL Ø15 x 10mm H Mount..... each
- (D) 16150-9 M4 Adapter to JEOL Ø25 x 5mm H Mount..... each
- (E) 16217-9 M4 Adapter to JEOL Ø32 x 6mm H Mount..... each



PIN STUB TO M4 ADAPTERS

Standard low profile, short and long pin with M4 threads to convert any of the Modular SEM Specimen Holders into a pin stub type holder. Can be used on Cambridge Instruments, Leica, CamScan, Tescan, and FEI/Philips SEMs. Short pin for Zeiss/LEO SEMs, long pin for AMRAY SEMs. This arrangement will add height to the total assembly and is not recommended for larger specimen holders or heavy specimens.

- 15319-9 Short Pin Stub Adapter to M4, 6mm (0.24") Pin Lengtheach
- 15319 Standard Low-Profile Pin Stub Adapter to M4, 9.5mm (0.34") Pin Lengtheach
- 15319-2 Long Pin Stub Adapter to M4, 14.75mm (0.58") Pin Lengtheach



JEOL OR ISI/ABT/TOPCON MOUNTS TO HITACHI M4 MOUNT

Small cylinder mount adapter accommodates JEOL or ISI/ABT/Topcon cylinder mounts up to 15mm diameter. Enables the use of Ø9.5 and Ø12.2mm JEOL or Ø15mm ISI/ABT/Topcon cylinder mounts on Hitachi M4. Made from aluminum with stainless steel screw, Allen wrench included.

15401 S-4 Mount Adapter to Hitachi M4.....each



JEOL OR ISI/ABT/TOPCON MOUNTS TO PIN STUB

Small cylinder to pin mount adapter stubs. Enables the use of Ø9.5 and Ø12.2mm JEOL or Ø15mm ISI cylinder mounts on pin mount holder (FEI/Philips, Zeiss/LEO, Cambridge Instruments, Leica, Amray, Tescan and CamScan). Pin length 3/8" Material: machined aluminum with stainless steel screw, Allen wrench included.

15301 JEOL or ISI Cylinder Mount Adapter to Pin Stubeach

S-4 MOUNT ADAPTER TO HITACHI M4

Adapter that allows the use of S-4 sample mounts on standard Hitachi M4 thread. 31mm diameter, 6mm height, aluminum with stainless steel screw. Allen wrench included.

15317 S-4 Mount Adapter to M4 Thread..... each



S-4 MOUNT ADAPTER TO PIN MOUNT

Adapter that allows the use of S4 sample mounts on standard pin mount holder (FEI/Philips, Zeiss/LEO, Cambridge Instruments, Leica, Amray, Tescan and CamScan). Pin length 3/8" 31mm diameter, 6mm height, aluminum with stainless steel screw. Allen wrench included.

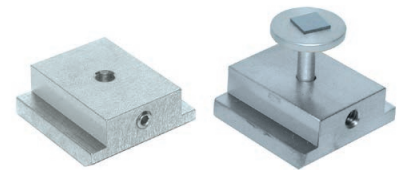
15313 S-4 Mount Adapter to Pin Mount..... each



PIN MOUNT TO HITACHI T-BASE STAGE ADAPTER

This pin mount adapter enables the use of standard 1/8" (3.2mm) pin mounts directly on a T-base stage adapter used in Hitachi S-4000, S-4200, S-4300, S-4500, S-4700 and S-3600N SEMs. Made from aluminum with stainless steel set screw. Allen wrench included.

15309-A Pin Mount adapter to T-base, Aluminum each



JEOL 6000/5000 STAGE ADAPTER FOR PIN MOUNTS

Fits JEOL SEM: 6510/6390/6380/6360/6010/5700/5600/5500/5410/5400/5300/T330/T220/T300/T200/TT100/T20

Aluminum dovetail stage adapter for using standard 3.2mm (1/8") pin mounts with the JEOL SEM's listed above.

15399-10 JEOL 6000/5000 Stage Adapter for Pin Mounts..... each

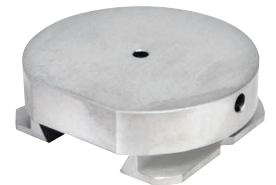


JEOL 6400/5800 STAGE ADAPTER FOR PIN MOUNTS

Fits JEOL SEM: 5800/5900/5910/6460/6480/6490/6610

Aluminum dovetail stage adapter for using standard 3.2mm (1/8") pin mounts with the JEOL SEM's listed above.

15396-10 JEOL 6400/5800 Stage Adapter for Pin Mounts each



JEOL 7000/6500 STAGE ADAPTER FOR PIN MOUNTS

Fits JEOL SEM: 7800F/7601F/7600F/7100F/7000F/6700F/6500F and iT300

Solid brass dovetail stage adapter for using standard 3.2mm (1/8") pin mounts with the JEOL SEM's listed above. Can hold up to 5 standard 12.7mm (1/2") pin stubs or one larger pin stub.

15371-6710 JEOL 7000/6700/6500/iT300 Stage Adapter for Pin Mounts..... each



SEM SPECIMEN MOUNT ADAPTERS



PELCO® CYLINDER MOUNT GRIPPERS

Stainless Steel, tweezer style grippers with a convenient angle for easy handling and transporting of many types of SEM cylinder mounts. Size ranges from 10-32mm dia., for JEOL, Hitachi, and ISI/ABT/Topcon mounts.

- 1666 PELCO® Cylinder Mount Gripper for Ø15mm, 140mm L..... each
- 1659-25 PELCO® Cylinder Mount Gripper for Ø25mm, 153mm L..... each
- 1659-32 PELCO® Cylinder Mount Gripper for Ø32mm, 154mm L..... each



PELCO® CONDUCTIVE CARBON GLUE

Conductive carbon glue with an acrylic binder. The acrylic binder provides a much stronger bond than water or isopropanol based carbon paints. This carbon glue forms a thin, conductive and flexible layer with excellent adhesion on a wide variety of substrates. Ideally suited for conductive bonding or conductive painting where a strong bond and good conductivity is required. Let air dry or speed up heating up to max. 65°C (149°F). Supplied in a bottle

with a brush, 30g. Acetone (#16023) can be used as thinner/extender or as a cleaner to remove the carbon glue.

- Service Temperature: -40°C to +120°C (-40°F to +248°F)
- Solid Contents (graphite and carbon black): 39%
- Binder: Acrylic
- Carrier: Acetone based
- Sheet resistance: 47 ohm/sq

- 16050 PELCO® Conductive Carbon Glue, 30g..... each
- 16023 Acetone, Thinner/Extended/Cleaner, 30ml each

PELCO® CONDUCTIVE GRAPHITE PAINT

Conductive graphite paint is ideal for mounting conductive and non-conductive SEM specimens on stubs. Non-conductive specimens may require additional conductive paths. Supplied with convenient applicator brush in cap.



PELCO® Water Based Graphite Paint

Water based graphite paint contains no hydrocarbons as solvents and will give less contamination in high vacuum. Good choice for mounting samples for FE-SEM applications. Flat surface texture. Average flake size 1µm. Service temperature: 149°C.

- 16051 PELCO® Conductive Graphite Paint, Water Base, 50g.....each



PELCO® Isopropanol Based Graphite Paint

Conductive graphite paint, also known as carbon cement, primarily designed for SEM sample preparation. The graphite flakes, with an average size of 1µm, are bonded by a cellulose resin with isopropanol as diluent. Good bonding properties on most materials. Graphite content is 20%. Ideal to mount samples on sample stubs or to make a conductive path to the sample surface. Let fully dry before using in the SEM. Maximum service temperature: 200° C. Use Graphite Paint Thinner/Extender (#16054) to dilute when needed.

Graphite content is 20%. Ideal to mount samples on sample stubs or to make a conductive path to the sample surface. Let fully dry before using in the SEM. Maximum service temperature: 200° C. Use Graphite Paint Thinner/Extender (#16054) to dilute when needed.

- 16053 PELCO® Conductive Graphite Paint, Isopropanol Base, 30g.....each
- 16053-20 PELCO® Conductive Graphite Paint, Isopropanol Base, Squeeze Bottle, 20g.....each
- 16054 Graphite Paint Thinner/Extender, 30ml.....each

FOR PRODUCT DETAILS AND COMPLETE SELECTIONS
www.tedpella.com