

SPECIMEN MOUNTS & HOLDERS FOR HITACHI TM3030/TM3000/TM1000 SEM

HITACHI



PELCO® CYLINDER MOUNT GRIPPERS

Stainless Steel, tweezer style grippers with a convenient angle for easy handling and transporting of many types of SEM cylinder mounts. Size ranges from 10-32mm dia., for JEOL, Hitachi, and ISI/ABT/Topcon mounts.

- 1666 PELCO® Cylinder Mount Gripper for Ø15mm, 140mm L..... each
- 1659-25 PELCO® Cylinder Mount Gripper for Ø25mm, 153mm L..... each
- 1659-32 PELCO® Cylinder Mount Gripper for Ø32mm, 154mm L..... each



PELCO® CONDUCTIVE CARBON GLUE

Conductive carbon glue with an acrylic binder. The acrylic binder provides a much stronger bond than water or isopropanol based carbon paints. This carbon glue forms a thin, conductive and flexible layer with excellent adhesion on a wide variety of substrates. Ideally suited for conductive bonding or conductive painting where a strong bond and good conductivity is required. Let air dry or speed up heating up to max. 65°C (149°F). Supplied in a bottle

with a brush, 30g. Acetone (#16023) can be used as thinner/extender or as a cleaner to remove the carbon glue.

- Service Temperature: -40°C to +120°C (-40°F to +248°F)
- Solid Contents (graphite and carbon black): 39%
- Binder: Acrylic
- Carrier: Acetone based
- Sheet resistance: 47 ohm/sq

- 16050 PELCO® Conductive Carbon Glue, 30g..... each
- 16023 Acetone, Thinner/Extended/Cleaner, 30ml each

PELCO® CONDUCTIVE GRAPHITE PAINT

Conductive graphite paint is ideal for mounting conductive and non-conductive SEM specimens on stubs. Non-conductive specimens may require additional conductive paths. Supplied with convenient applicator brush in cap.



PELCO® Water Based Graphite Paint

Water based graphite paint contains no hydrocarbons as solvents and will give less contamination in high vacuum. Good choice for mounting samples for FE-SEM applications. Flat surface texture. Average flake size 1µm. Service temperature: 149°C.

- 16051 PELCO® Conductive Graphite Paint, Water Base, 50g.....each



PELCO® Isopropanol Based Graphite Paint

Conductive graphite paint, also known as carbon cement, primarily designed for SEM sample preparation. The graphite flakes, with an average size of 1µm, are bonded by a cellulose resin with isopropanol as diluent. Good bonding properties on most materials. Graphite content is 20%. Ideal to mount samples on sample stubs or to make a conductive path to the sample surface. Let fully dry before using in the SEM. Maximum service temperature: 200° C. Use Graphite Paint Thinner/Extender (#16054) to dilute when needed.

- 16053 PELCO® Conductive Graphite Paint, Isopropanol Base, 30g.....each
- 16053-20 PELCO® Conductive Graphite Paint, Isopropanol Base, Squeeze Bottle, 20g.....each
- 16054 Graphite Paint Thinner/Extender, 30ml.....each

FOR PRODUCT DETAILS AND COMPLETE SELECTIONS

www.tedpella.com

SPECIMEN MOUNTS & HOLDERS FOR HITACHI TM3030/TM3000/TM1000 SEM

HITACHI

A complete line of sample mounts and specimen holders made especially for the Hitachi TM1000/TM3000/TM3030 Tabletop Scanning Electron Microscopes. The specimen mounts with the M4 threaded hole are directly compatible with the TM1000/TM3000/TM3030 stage adapters and are available with diameters of 15, 25 and 32mm. The large 32mm sample mount allows for mounting a number of smaller samples or one large sample.

The wide choice of special specimen holders created for the Hitachi TM1000/TM3000/TM3030 will allow for using a greater variety of specimens. Easy mounting of specimens will make the TM1000/TM3000/TM3030 more productive and will give access to more applications. There are also adapters available to accommodate pin stub mounts and small cylinder mounts which are used in other Scanning Electron Microscopes. This will allow users of the TM1000/TM3000/TM3030 to share specimen mounts used on other SEM platforms.



ALUMINUM M4 SPECIMEN MOUNTS

- 16324 Hitachi, M4, Aluminum, Ø15 x 6mm..... pkg/10, 50 or 100
- 16322 Cylinder, M4, Aluminum, Ø15 x 10mm pkg/10, 50 or 100



- 16327 Hitachi, M4, Aluminum, Ø25 x 6mm..... pkg/10, 50 or 100
- 16323 Hitachi, M4, Aluminum, Ø25 x 10mm pkg/10 or 50



- 16325 Hitachi, M4, Aluminum, Ø32 x 6mm..... pkg/10 or 50
- 16326 Hitachi, M4, Aluminum, Ø32 x 10mm..... pkg/10 or 50

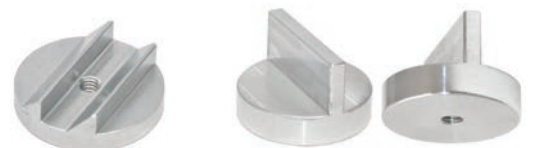


ANGLED, ALUMINUM M4 SPECIMEN MOUNTS

- 16330 Hitachi, M4, Aluminum, 45°, Ø15 x 10mm.....pkg/1 or 10
- 16334 Hitachi, M4, Aluminum, 45°/90°, Ø15 x 10mmpkg/1 or 10



- 16331 Hitachi, M4, Aluminum, Double 45°, Ø25 x 4mm.....pkg/1 or 10
- 16356 Hitachi, M4, Aluminum, Double 90°, Ø25 x 16mmeach



ENGRAVED & NUMBERED, ALUMINUM M4 SPECIMEN MOUNTS

- 16361 Cylinder, M4, Aluminum, 3 Divisions, Ø15 x 6mmeach
- 16365 Cylinder, M4, Aluminum, 9 Divisions, Ø25 x 6mmeach
- 16368 Cylinder, M4, Aluminum, 12 Divisions, Ø32 x 6mmeach



 **TED PELLA, INC.**
Microscopy Products for Science and Industry

www.tedpella.com sales@tedpella.com 800-237-3526

SPECIMEN MOUNTS & HOLDERS FOR THE HITACHI TM3030/3000/1000 SEMs

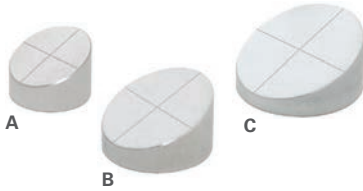
SPECIMEN MOUNTS WITH 22° / 25° ANGLE; EQUIPPED WITH AN EDS ANALYSIS SYSTEM

The 22° / 25° tilt provides better detection and higher signal to noise ratio for x-ray analysis.

The 22° tilt is designed for the TM1000 equipped with an EDS Analysis System.

The 25° tilt is designed for the TM3000/TM3030 equipped with an EDS Analysis System.

Angled mounts have an orientation cross which allows for precise positioning towards the EDS detector.



(A)	16380-25	Ø15mm, 25° Angle, M4, Aluminum for TM3000/3030.....	pkg/1 or 10
(B)	16381	Ø20mm, 22° Angle, M4, Aluminum for TM1000.....	pkg/1 or 10
(B)	16381-25	Ø20mm, 25 Angle, M4, Aluminum for TM3000/3030.....	pkg/1 or 10
(C)	16382	Ø25mm, 22° Angle, M4, Aluminum for TM1000.....	pkg/1 or 10
(C)	16382-25	Ø25mm, 25 Angle, M4, Aluminum for TM3000/3030.....	pkg/1 or 10

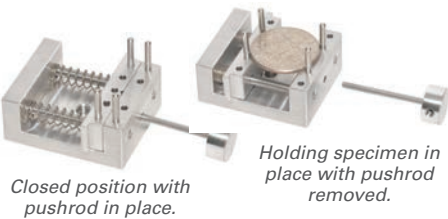
ALUMINUM SPECIMEN HOLDERS FOR THE HITACHI TM3030/3000/1000



Micro Vise Holder

A fast and clean way to hold a variety of specimens. The maximum gap is 11mm (7/16"). The jaws are 25.4mm (1") wide.

15340-4	Hitachi TM1000 Micro Vise Holder, M4.....	each
---------	---	------



Small Springloaded Vise Clamp

Small springloaded vise clamp for samples up to 12.7mm (1/2"). The jaws are 25mm (1") wide. Jaws also accommodate 1/16" x 1/2" stainless steel pins for more awkward shaped samples. 4 pins are included. Removable pushrod for easy loading is provided. Overall size without pushrod 30 x 25 x 12.5mm (1.18" x 1" x 1/2").

15341-4	Small Springloaded Vise Clamp, M4.....	each
15341-20	Replacement Pins for Vise Clamp, 1/2" Long.....	pkg/10



Bulk Specimen Holder

Holds irregular and round specimens up to a diameter of 32mm (1.25"). Two sets of stainless steel Allen screws and Allen wrench included. Holder size is Ø40 x 13mm H.

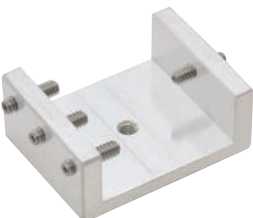
15308-4	Hitachi TM1000 Bulk Specimen Holder, M4.....	each
---------	--	------



Straight Bulk Specimen Holder

Versatile specimen holder to clamp irregular shaped specimens. Opening is 15.9 W x 25.4 L x 9.5mm D (5/8" W x 1" L x 3/8" D). Holder size is 25.4 x 25.4 x 12.7mm (1" x 1" x 1/2"). Allen wrench included.

15320-4	Hitachi Straight Bulk Specimen Holder, M4.....	each
---------	--	------



Large Bulk Specimen Holder

Opening is 32 W x 32 L x 13mm D (1-1/4" W x 1-1/4" L x 1/2" D). Includes Allen wrench and stainless steel screws.

15321-4	Large Bulk Specimen Holder, M4.....	each
---------	-------------------------------------	------



Multipurpose Specimen Mount

Accepts up to 25.4mm (1") diameter specimens. The slotted design also allows for clamping elongated or rod shaped specimens. Holder size is Ø31.5 x 11mm (Ø1-1/4" x 7/16"). Allen wrench and stainless steel Allen screw included.

15305-4	Hitachi Multipurpose Specimen Mount, M4.....	each
---------	--	------

Cross Section Holder

This specimen holder is designed to investigate cross sections and flat samples up to 6.35mm (1/4"). Adjustable angle, made of non-magnetic stainless steel. Overall height is 30mm (1.2") from the pivot point. Clamp part is 16mm (0.62") cube without screws.

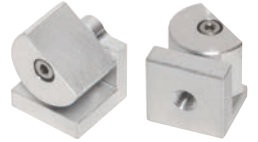
15325-4 Hitachi Cross Section Holder, M4..... each



Compact Variable Tilt Mount

This compact variable tilt specimen mount allows for easy mounting and tilting small samples from 0° - 90° and SEM investigation with small working distances. Additional markings for 30°, 45° and 70°. Table size is 11 x 14mm (0.46" x 0.55"). Overall size is 14 x 14.3 x 14.5mm (0.55" x 0.56" x 0.57"). Allen wrench and stainless steel screw included.

15439 Compact Variable Tilt Mount, M4 each



Variable Tilt Specimen Holder for Pin Mounts

Accommodates pin stubs up to 18mm (0.7") diameter or specimens with a size up to 26 x 20mm (1.02" x 0.79"). Tilts 0° - 90° with 10° markings. Additional markings for 30°, 45° and 70°. Tilt table size is 26 x 20mm. Overall size is 33 x 20 x 19mm H (1.23" x 0.79" x 0.75"). Allen wrench and stainless steel screws included.

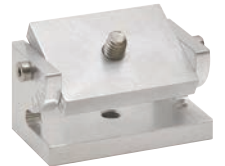
15450-4 Variable Tilt Specimen Holder, M4 each



Variable Tilt Specimen Holder for Hitachi M4 Mounts

Accommodates Hitachi 15mm cylinder mount with M4 thread. Tilts 0° - 90° with 10° markings. Additional markings for 30°, 45° and 70°. Tilt table size is 26 x 20mm. Overall size is 33 x 20 x 19mm H (1.23" x 0.79" x 0.75"). Allen wrench and stainless steel screws included.

15451-4 Variable Tilt Specimen Holder for Hitachi M4 Mounts, M4..... each



45° Pre-Tilt Holder for Hitachi Mounts and Pin Stubs

Accepts 15mm Hitachi mounts on pin with M4 thread. Pin can be rotated and fixed for optimum position. When the pin with M4 thread is removed, this holder also accepts a standard 12.7mm (1/2") pin stub with 3.2mm (1/8") pin. Allen wrench and stainless steel Allen screw included.

15428-45 45° Pre-Tilt Holder, M4 each



Adjustable Profile Holder

Designed to adjust the exact angle for cross sections made from wafers. Maximum specimen thickness 3.2mm (1/8"). Made of machined aluminum with brass. Allen wrench and stainless steel Allen screw included.

15356-4 Hitachi Adjustable Profile Holder, M4..... each



45° / 90° Combination Holder

Versatile combined specimen holder for 90° cross sections and 45° pin stub. Holder size is 22.4 x 16 x 19.25mm H (7/8" x 5/8" x 3/4" H). Allen wrench and stainless steel Allen screw included.

15358-4 Hitachi 45°/90° Combination Holder, M4 each



Cylinder Holder, 22mm (7/8")

Specimen holder for cylinders up to 22mm (7/8") diameter. Allen wrench and stainless steel Allen screw included.

15402 Hitachi Specimen Holder for Cylinders up to 22mm(7/8"), M4..... each



Metallurgical Mount Holders - Multiple Sizes Available!

- (A) 15403 1" or 25mm Hitachi Metallurgical Mount Holder, M4.....each
- (B) 15404 1-1/4" or 30mm Hitachi Metallurgical Mount Holder, M4.....each
- (C) 15405 1-1/2" or 40mm Hitachi Metallurgical Mount Holder, M4.....each
- (not shown) 15406 2" or 50mm Hitachi Metallurgical Mount Holder, M4.....each



SPECIMEN MOUNTS & HOLDERS FOR THE HITACHI TM3030/3000/1000 SEMs

ALUMINUM SPECIMEN HOLDERS FOR THE HITACHI TM3030/3000/1000 (CONTINUED)



Thin Specimen Split Mount

Double hex screw tightening for a firm hold with M4 thread. Holder size is $\varnothing 15 \times 10\text{mm H}$ ($\varnothing 0.591'' \times 0.394''$ H). Allen wrench and stainless steel Allen set screws included.

15335-4 Hitachi Thin Specimen Split Mount, M4..... each



Tube/Needle Clamp

A small tube, needle or wire clamp based on a standard $\varnothing 15 \times 10\text{mm}$ cylinder mount with M4 thread. Ideal for examining wire cross sections or needle tips. Holds wires, tubes and needles up to $\varnothing 2\text{mm}$ ($0.008''$); hole is 5mm ($0.20''$) deep. Made of vacuum grade aluminum with a stainless steel set screw.

15490 Tube/Needle Clamp, M4..... each



Small Set Screw Vise

Small set screw vise with an open slot of 4mm ($.157''$) wide and 5mm ($0.197''$) deep. $\varnothing 15 \times 12\text{mm}$ x M4. Made of machined aluminum with stainless steel Allen wrench and stainless steel Allen set screw included.

16335 Small Set Screw Vise, M4..... each



Large Set Screw Vise, $\varnothing 25\text{mm}$

Set screw vise with an open slot of 10mm ($0.394''$) wide and 5mm ($0.197''$) deep. Holder size is $\varnothing 25 \times 10\text{mm H}$ ($1'' \times 0.394''$ H). Allen wrench and stainless steel set screw included.

16371 Large Set Screw Vise, M4..... each



Double Slotted Mini Vise

Double slotted set screw vise with 2 ea. 1mm wide x 3mm deep slots to clamp thin specimens or cross sections. Simple but effective design to hold wafers and thin samples up to 1mm ($0.039''$) thick. $\varnothing 15\text{mm} \times 6\text{mm H}$. Allen wrench and stainless steel Allen set screws included.

16341 Double Slotted Set Screw Mini Vise, M4..... each



Large Double Slotted Vise

Large double slotted set screw vise with 2 ea. 2.5mm wide x 5mm deep slots to clamp thin specimens or cross sections without the need for tape or conductive paint. $\varnothing 25\text{mm} \times 10\text{mm H}$ ($1'' \times 0.4''$ H). Allen wrench and stainless steel Allen set screws included.

16372 Large Double Slotted Set Screw Vise, $\varnothing 25\text{mm} \times 10\text{mm H}$, M4..... each



Large Double Slotted Vise, $\varnothing 32\text{mm}$

$\varnothing 32\text{mm}$ large double slotted set screw vise with 2 ea. 2.5mm wide x 5mm deep slots. Dimensions $\varnothing 32\text{mm} \times 10\text{mm H}$ ($1-1/4'' \times 0.394''$ H). Clamp thin specimens or cross sections without the need for tape or conductive paint. Allen wrench and stainless steel Allen set screws included.

16312 Large Double Slotted Set Screw Vise, $\varnothing 32 \times 10\text{mm}$, M4..... each

SPECIMEN HOLDER ADAPTERS FOR THE HITACHI TM3030/3000/1000

Single Stub Pin Holder

Pin stub mount adapters to M4 thread. 15 x 10mm H, 15 x 15mm H, and 16 x 25mm H. Enables the use of the common pin stub mounts in the Hitachi TM1000/3000/3030. Allen wrench and stainless steel Allen set screw included.

15363-1	Hitachi Single Pin Stub Holder, Ø15 x 10mm H, M4	each
15363-2	Hitachi Single Pin Stub Holder, Ø15 x 15mm H, M4	each
15387-2	Hitachi Single Pin Stub Holder, Ø16 x 25mm H, M4	each

JEOL or ISI/ABT/Topcon Mounts to Hitachi M4 Mount

Small cylinder mount adapter accommodates JEOL or ISI/ABT/Topcon cylinder mounts up to Ø15mm diameter. Enables the use of Ø9.5 and Ø12.5mm JEOL stubs or Ø15mm ISI cylinder mounts. Allen wrench and stainless steel Allen set screws included.

15401	Small Cylinder Mount Adapter	each
-------	------------------------------------	------

Multi Pin Stub Holder

Accommodates up to four standard 12.7mm (1/2") pin stubs with a 3.2mm (1/8") pin diameter. Enables the use of the common pin stub mounts in the Hitachi TM1000/3000/3030. Holder size is Ø31.8 x 11.25mm (1.25" x 0.44"). Allen wrench and stainless steel Allen set screws included.

15310-4	Hitachi Multi Pin Stub Holder, M4	each
---------	---	------

Multi Specimen Holder

Holds up to five 9.5mm cylinder mounts, commonly used in JEOL SEMs. Holder size is Ø31.5 x 11.5mm (1.24" x 0.45"). Allen wrench and stainless steel Allen set screws included.

15315-4	Hitachi Multi Specimen Holder, M4	each
---------	---	------

S-4 Mount Adapter

The S-4 mount adapter allows the use of the S-4 specimen mounts (Cambridge Instruments, Leica, CamScan) on the Hitachi TM1000/TM3000/TM3030 stage. Ø31mm x 6mm H. Material: machined aluminum with stainless steel screw. Note: Top image shows S-4 mount left of the adapter, bottom: S-4 mount inserted into adapter.

15317	S-4 Mount Adapter	each
-------	-------------------------	------

PELCO SEMClamp™ HOLDERS FOR THE HITACHI TM3030/3000/1000

PELCO Mini SEMClamp™ Ø15 x 10mm

Mini SEMclamp™ on a Ø15 x 10mm M4 cylinder mount. Convenient for holding flat or thin specimens such as Si chips, wires, foil and small tubes. Material: vacuum grade aluminum with brass screw.

15494	PELCO Mini SEMClamp™ Ø15 x 10mm, M4	each
-------	---	------

Small PELCO SEMClamp™ 15 x 10mm

PELCO SEMClamp™ holder 15mm (0.6") long with 10mm (0.4") wide clamping area. Convenient holder for clamping down samples up to a thickness of 7mm under the clamping strips. Overall dimensions 23 x 20 x 9mm (0.9" x 0.78" x 0.35"). Material: machined aluminum with brass screws.

15347-4	Small PELCO SEMClamp™ 15 x 10mm, M4	each
---------	---	------

Medium PELCO SEMClamp™ 25 x 15mm

PELCO SEMClamp™ holder 25mm (1") long with 15mm (0.6") wide clamping area. Convenient holder for clamping down samples up to a thickness of 7mm under the clamping strips. Overall dimensions 33 x 25 x 9mm (1.3" x 1" x 0.35"). Material: machined aluminum with brass screws.

15348-4	Medium PELCO SEMClamp™ 25 x 15mm, M4	each
---------	--	------

Recessed PELCO SEMClamp™ 25 x 15mm

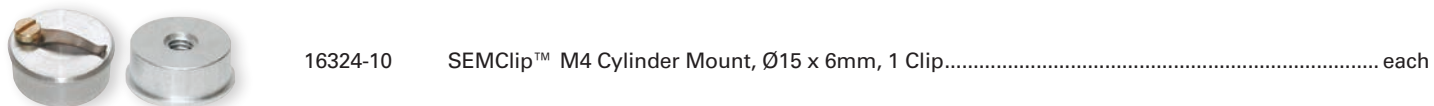
5mm recess allows for background free imaging and no contact with sample surface in imaging area. Clamping area is 25mm (1") long and 15mm (0.6") wide. Maximum thickness 7mm under the clamping strips. Overall dimensions 33 x 25 x 11mm (1.3" x 1" x 0.43"). Material: machined aluminum with brass screws.

15346-4	Recessed PELCO SEMClamp™ 25 x 15mm, M4	each
---------	--	------

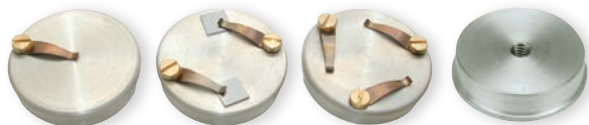


SPECIMEN MOUNTS & HOLDERS FOR THE HITACHI TM1000/3000/3030 SEMs

PELCO SEMClip™ CYLINDER MOUNTS FOR HITACHI TM3030/3000/1000



16324-10 SEMClip™ M4 Cylinder Mount, Ø15 x 6mm, 1 Clip..... each



16327-10 SEMClip™ M4 Cylinder Mount, Ø25 x 6mm, 1 Clip..... each

16327-20 SEMClip™ M4 Cylinder Mount, Ø25 x 6mm, 2 Clips..... each

16327-30 SEMClip™ M4 Cylinder Mount, Ø25 x 6mm, 3 Clips..... each



16326-10 SEMClip™ M4 Cylinder Mount, Ø32 x 10mm, 1 Clip....each

16326-20 SEMClip™ M4 Cylinder Mount, Ø32 x 10mm, 2 Clips..each

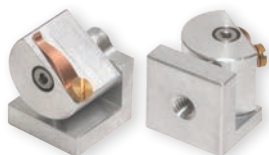
16326-30 SEMClip™ M4 Cylinder Mount, Ø32 x 10mm, 3 Clips..each



16356-20 SEMClip™ M4 Cylinder Mount, Ø25 x 16mm, Double 90°, 2 Clips..... each



16241 SEMClip™ M4 Mount, 12 x 12 x 14mm, 4 Clips..... each



15439-10 SEMClip™ on Compact Variable Tilt M4 Mount 0-90°, Table Size 11 x 14mm, Overall Size 14 x 14.3 x 14.5mm, 1 Clip each



16357-20 SEMClip™ M4 Cylinder Mount, Ø25 x 16mm, 45/90°, 2 Clips each



PELCO SEMClip™ REPLACEMENT CLIPS & SCREWS

Made from a spring grade beryllium-copper alloy. Thickness of clip is 0.25mm (0.01"), overall length is 12.7mm (1/2"), width at tip is 1.6mm (1/16"), hole diameter is 2.2mm (0.087").

16399 PELCO SEMClip™ Clips.....pkg/10

16399-10 PELCO SEMClip™ Screws, Brass, M2 x 3mm Lengthpkg/10

For Product Details, Complete Selection of Specimen Mounts & Holders:

www.tedpella.com/SEM_html/SEMsupply.htm



SINGLE HITACHI M4 MOUNT STORAGE TUBE & MAILER

A 15mm diameter, M4 threaded Hitachi mount can be protected and held securely in the cap (base) of the tube on an M4 screw. Suitable for

Ø15mm Hitachi Mounts. Hitachi Mounts are sold separately. Inside dimension of clear tube: Ø21mm (0.83"), max sample height on stub is 20mm (0.79"). Outside dimensions are Ø23mm (0.9") with a height of 52mm (2.05"). Clear tube is made of polystyrene, cap is made of low density polyethylene (LDPE). Sold in packs of 10.

16630-4 Single Hitachi Mount Storage Mailer, M4pkg/10



PELCO® 10 HITACHI SEM MOUNT STORAGE HOLDER & BOX

Versatile storage box and holder for Hitachi SEM mounts with M4 threaded hole in the base. Tapered plastic posts allow easy storage and retrieval. Numbered 1 – 10 to accommodate Hitachi mounts from 15 to 32mm diameter. Can hold 10 of the 15mm mounts, 8 of

the 25mm or 2 of the 32mm with enough space to place and remove the mounts. Maximum specimen height for 6mm high Hitachi SEM mounts is 15mm with closed lid.

16791 PELCO® SEM Storage Box and Holdereach



PELCO® X-TREME 10 HITACHI SEM MOUNT STORAGE BOX WITH HOLDER

Very strong and rugged clear polycarbonate box to store standard Hitachi SEM mounts with M4 threaded hole in the base. This box is watertight, crushproof and dustproof. The strong hinges, locking

clasp and O-ring seal makes this an ideal transport, shipping and storage box for SEM samples on pin mounts. The holder insert is numbered 1-10 and accommodates Hitachi SEM mounts from 15-32 mm diameter. Same storage capacity as Product No. 16791 above.

16795 PELCO® X-TREME SEM Storage Box w/ Holdereach



PELCO TABS™ CARBON CONDUCTIVE TABS, DOUBLE COATED

The simplicity of application and smooth, clean surfaces of PELCO Tabs™ Carbon Conductive Tabs are a significant improvement compared to many of the other common adhesives that have been used in SEM mounting.

Both tab sides have a thick conductive adhesive (conductive inner tab is 35µm and the adhesive is 45µm on each side for a total thickness of 125µm [5 mils]) with a liner on both sides, a transparent liner and white liner respectively. They are ready for immediate use. The top protective liner does not have to be removed until the sample is ready to be mounted. This reduces possible contamination. Outgassing is negligible.

The conductive adhesive is a carbon filled acrylic, free of solvents. It can be removed from the specimen mount with ethyl acetate, ethanol, isopropanol, alcohols or our 3M™ Adhesive Remover 80924 which is solvent-free. Temperature maximum is 60°C (140°F). High purity carbon tabs may contain very small impurities of Al and Si.

16084-1 PELCO Tabs™, 12mm ODpkg/100
16084-2 PELCO Tabs™, 25mm ODpkg/54



CARBON CONDUCTIVE TAPE, DOUBLE COATED

These carbon tapes are conductive and may be used conveniently for SEM or EDS applications. Same material as the PELCO Tabs™, Carbon Conductive Tabs. The purity of this tape is identical

to the PELCO Tabs™; only very small impurities of Al and Si may be found.

Both sides of the tape have a thick conductive adhesive (conductive inner film is 35µm and the adhesive is 45µm on each side for a total of 125µm [5 mils]) with a white liner. The double adhesive and conductive design permits quick mounting of samples without using liquid or colloidal adhesives.

Relatively solid and non-porous; does not absorb small samples. Thickness is 0.16mm. Can be used down to -20°C (-4°F) and temperature max. is 60°C (140°F). Available in 8, 12, 20, 25, and 50mm W x 20m L (.31, .47, .79, .98, and 1.96" x 21.8 yd). Core diameter is 76mm (3"). SEM mounts not included.

16073 Carbon Tape, 8mm W x 20m Leach
16073-1 Carbon Tape, 12mm W x 20m Leach
16073-2 Carbon Tape, 20mm W x 20m Leach
16073-4 Carbon Tape, 25mm W x 20m Leach
16073-3 Carbon Tape, 50mm W x 20m Leach



3M™ COPPER CONDUCTIVE TAPE, SINGLE ADHESIVE SURFACE

The tape is easily cut to size and may be quickly applied to a specimen mount or other surface. Carbon or metallic coating normally is applied to the sample and mount. An electrical discharge bridge is then completed from sample, through the copper and its conductive adhesive to the grounded specimen mount.

The tape is dead soft copper with a conductive acrylic adhesive. It is supplied on a removable liner for easy handling and cutting. The tape offers excellent conductivity through the foil backing. **For Sale in US Only.**

16072 3M™ Copper Conductive Tape, 6.3mm W x 16.46m L (1/4" x 18 yd)each
16072-1 3M™ Copper Conductive Tape, 12.7mm W x 16.46m L (1/2" x 18 yd)each