

CASSETTES AND MOLDS

FOR PRODUCT DETAILS AND COMPLETE SELECTIONS

www.tedpella.com



BIOPSY FOAM SPONGE PADS

polyester urethane foam

Prevent tissues from being lost during processing. Made of cellular polyester urethane foam which is always verified

for consistency throughout in order to achieve optimum solvent flow. Biopsy samples are sandwiched between two foam pads and are placed either in tissue capsules or cassettes with metal or plastic lids.

- | | | |
|---------|---|----------|
| 27154-1 | Cassette Biopsy Foam Pads, 30.2 x 25.4 x 2mm H | pkg/1000 |
| 27154-8 | Biopsy Foam Pads for Slimsette Cassettes 27.4 x 25.4 x 2mm H | pkg/1000 |
| 27154-9 | Biopsy Foam Pads for Histoette II Cassettes and cassettes with rear hinged lids standard size 30.2 x 25.4 x 2mmH..... | pkg/1000 |



NYLON BIOPSY BAGS

Made for the processing of small pathology tissue samples and cytology aspirates. Tissue samples are placed or filtered into the biopsy bag. The bag is then placed into a tissue cassette and processed as normal. Biopsy bags prevent the loss of small tissue samples and are available in three sizes.

- | | | |
|---------|-----------------------------|----------|
| 27154-5 | Biopsy Bags, 30 x 50mm..... | box/1000 |
| 27154-6 | Biopsy Bags, 45 x 75mm..... | box/200 |
| 27154-7 | Biopsy Bags, 75 x 95mm..... | box/500 |



CELLSAFE™+ BIOPSY CASSETTS

New improved version with locking latches

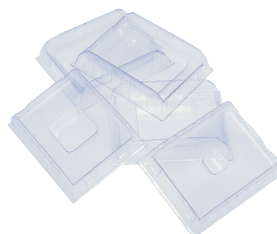
The CellSafe+ Biopsy Capsule offers high specimen security designed to contain small tissue fragments and biopsies during tissue processing. The CellSafe+Biopsy capsule fits into a standard tissue cassette for secure processing. The CellSafe+ is designed for single use.

IVD CE *In Vitro* Diagnostic Medical Device

Interior dimensions of a regular cassette are: 30 x 26 x 4.92mm H.

Exterior dimensions of the CellSafe™ Biopsy Cassettes are: 27.5 x 25 x 4.57mm H.

- | | | |
|---------|---|---------|
| 27165 | Cassettes, CellSafe™, Biopsy, White | pkg/100 |
| 27165-8 | Cassettes, CellSafe™, Biopsy, Blue | pkg/100 |



DISPOSABLE BASE MOLDS - SERIES 27147

Disposable base molds offer ease and convenience of operation. They are inexpensive enough to be discarded after use, yet strong enough to be reused. Made of PVC, they offer excellent thermal exchange.

- | | | |
|---------|----------------------|---------|
| 27147-1 | 7 x 7 x 5mm | box/500 |
| 27147-2 | 15 x 15 x 5mm | box/500 |
| 27147-3 | 24 x 24 x 5mm | box/500 |
| 27147-4 | 30 x 24 x 5mm | box/500 |
| 27147-5 | 37 x 24 x 5mm | box/500 |
| 27147-6 | 37 x 24 x 10mm | box/500 |



NEW CELLSAFE™5 BIOPSY CASSETTS

The CellSafe™ is designed to contain small tissue fragments and biopsies during tissue processing. The CellSafe™ 5 was developed for the simultaneous preparation of core needle biopsies. Each well is numbered for identification. The blue cassette

aids with contrast and visualization of light colored biopsy tissues.

If you are using any unusual reagents it is suggested that you carry out preliminary chemical compatibility tests before using the CellSafe™ 5 to contain tissue samples. IVD CE *In Vitro* Diagnostic Medical Device

- | | | |
|----------|--|---------|
| 27165-10 | CellSafe™ 5 Chambered Biopsy Cassette, White | pkg/100 |
| 27165-11 | CellSafe™ 5 Chambered Biopsy Cassette, Blue | pkg/100 |



PEEL-A-WAY® DISPOSABLE HISTOLOGY MOLDS

These tear away molds are useful for most epoxy and acrylic resin embedding media and for paraffin waxes. Especially suited for use with paraffin. These molds may be used under anaerobic conditions.

- | | | |
|-------|--|----------|
| 27110 | Peel-A-Way® 22mm square, 20mm deep | case/288 |
| 27112 | Peel-A-Way® 22 x 30mm x 20mm deep, rectangular | case/288 |
| 27114 | Peel-A-Way® 22 x 40mm x 20mm deep, rectangular | case/264 |
| 27116 | Peel-A-Way® Truncated, 22mm square top, tapered to 8mm bottom | case/288 |
| 27118 | Peel-A-Way® Truncated, 22mm square top, tapered to 12mm bottom | case/288 |

©Ted Pella, Inc. 8-15-2018, Printed in U.S.A.


TED PELLA, INC.
 Microscopy Products for Science and Industry

www.tedpella.com
 sales@tedpella.com
 800-237-3526



CASSETTES AND MOLDS

FOR PRODUCT DETAILS AND COMPLETE SELECTIONS

www.tedpella.com



HISTOSETTE II® BIOPSY & TISSUE CASSETTES

acetal resin polymer

Integral lid, large writing area, 45° angle. Suitable for certain types of cassette labeling instruments. Sold in dispenser boxes of 500.

pore size: 1.0 mm

Histosette II® Biopsy Cassettes

27157-1	White	box/500
27157-2	Pink	box/500
27157-3	Green	box/500
27157-4	Yellow	box/500
27157-5	Blue	box/500

Histosette II® Tissue Cassettes

27156-1	White	box/500
27156-2	Pink	box/500
27156-3	Green	box/500
27156-4	Yellow	box/500
27156-5	Blue	box/500



UNISETTE™ BIOPSY & TISSUE CASSETTES

acetal resin polymer

Cassettes keep specimen safely submerged in liquid. Efficient flow-through slots. Snap-latch and hinge-lock design prevent early separation of base and lid and allows for one hand operation. Large labeling area on two sides of cassette. Anterior writing area is at 35° angle. Sold in dispenser boxes of 500.

pore size: 1 mm

Unisette® Biopsy Cassettes

27400-1A	White	box/500
27400-2A	Pink	box/500
27400-3A	Green	box/500
27400-5A	Blue	box/500

Unisette® Tissue Cassettes

27450-1	White	box/500
27450-2	Pink	box/500
27450-3	Green	box/500
27450-4	Yellow	box/500
27450-5	Blue	box/500



SLIMSETTE™ BIOPSY & TISSUE CASSETTES

acetal resin polymer

These cassettes are more compact and efficient than previous cassettes. They feature a unique recessed cover in automated cassette labeling machines. Molded from high density acetal resin polymer allowing them to sink rapidly. The covers may be opened and closed repeatedly and always relock securely without specimen loss. The front labeling area has a 45° angle. Sold in dispenser boxes of 500.

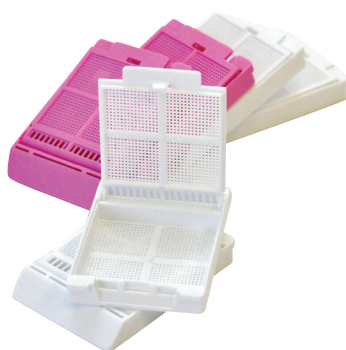
pore size: 0.8 mm

Slimsette™ Biopsy Cassettes

27454-1	White	box/500
27454-2	Pink	box/500
27454-3	Green	box/500
27454-4	Yellow	box/500
27454-5	Blue	box/500

Slimsette™ Tissue Cassettes

27453-1	White	box/500
27453-2	Pink	box/500
27453-3	Green	box/500
27453-4	Yellow	box/500
27453-5	Blue	box/500



MICROMESH™ ONE COMPARTMENT BIOPSY CASSETTES

acetal resin polymer

1676 square openings allowing for greatly improved fluid exchange without having to use biopsy pads. 27mm compartment, is perfect even for needle biopsies. The cover does not protrude above the cassette, a great space-saving feature allowing more cassettes to be stacked in automatic labeling machines and tissue processors. 45° angle writing area.

pore size: 0.38 mm

Micromesh™ 1-Compartment Biopsy Cassettes

27150-1	White	box/250
27150-2	Pink	box/250
27150-3	Green	box/250
27150-4	Yellow	box/250
27150-5	Blue	box/250



TED PELLA, INC.

Microscopy Products for Science and Industry

www.tedpella.com sales@tedpella.com 800-237-3526



CASSETTES AND MOLDS



MICROMESH™ & MICROSETTE I® MULTI-COMPARTMENT BIOPSY CASSETTES

acetal resin polymer

Micromesh™ Cassettes have 4 compartments measuring 13mm each. Microsette I® Cassettes have 6 compartments measuring 7 x 12mm each. No biopsy pads needed, maximum fluid exchange and proper draining.

pore size: 0.38 mm

Micromesh™ 4-Compartment Biopsy Cassettes

27165-1	White	box/250
27165-2	Pink	box/250
27165-3	Green	box/250
27165-4	Yellow	box/250
27165-5	Blue	box/250

pore size: 0.26 mm

Microsette I® 6-Compartment Biopsy Cassettes

27146-1	White	box/250
27146-2	Pink	box/250
27146-3	Green	box/250
27146-4	Yellow	box/250
27146-5	Blue	box/250



TISSUE CASSETTE BASES

acetal polymer for use with metal cover #27167

Disposable plastic tissue cassette bases are suitable for holding and identifying tissue samples in processing, embedding and sectioning procedures.

27168 Series, Various Colors	box/500
------------------------------	---------

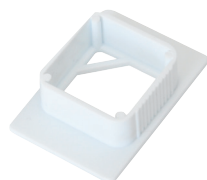


MACROSETTE® CASSETTES

acetal polymer, with covers assembled

Disposable cassette especially designed to hold larger specimens with a maximum thickness of 10mm during embedding and storage. Packed in dispenser box of 250.

27166	White	box/250
-------	-------	---------



EMBEDDING RINGS

Embedding rings are suitable for holding and identifying tissue sample blocks and fit well in microtome chuck adapters.

Etched writing surface. The embedding ring securely holds the tissue sample in

the microtome chuck adapter for sectioning and then identifies the sample while in storage.

27169-1	White	box/250
---------	-------	---------



PELCO® STAINLESS STEEL BASE MOLDS

High quality, yet economically priced stainless steel base molds for use with all standard tissue and biopsy cassettes. The reusable molds are 5mm deep and have extended legs for improved stability.

Smooth stainless steel surface and rounded corners facilitate easy removal. Flat base for maximum thermal transfer.

27280	7 x 7 x 5mm	pkg/12
27281	15 x 15 x 5mm	pkg/12
27282	24 x 24 x 5mm	pkg/12
27283	30 x 24 x 5mm	pkg/12
27284	37 x 24 x 5mm	pkg/12



ARCHIMEDES™ BASE MOLDS

Pearlex (Ceramic) coated stainless steel, base molds provide non-stick base molds for use with all standard tissue and biopsy cassettes. The reusable molds are 5mm deep and have extended legs for improved stability. The

Pearlex surface and rounded corners provide for effortless block removal from the base mold. The Pearlex coating provides exceptional thermal transfer.

Available in 5 sizes.

27275-1	Archimedes™ Non-Stick Base Mold, 9 x 9 x 5mm	pkg/12
27275-2	Archimedes™ Non-Stick Base Mold, 15 x 15 x 5mm	pkg/12
27275-3	Archimedes™ Non-Stick Base Mold, 24 x 24 x 5mm	pkg/12
27275-4	Archimedes™ Non-Stick Base Mold, 24 x 30 x 5mm	pkg/12
27275-5	Archimedes™ Non-Stick Base Mold, 24 x 37 x 5mm	pkg/12

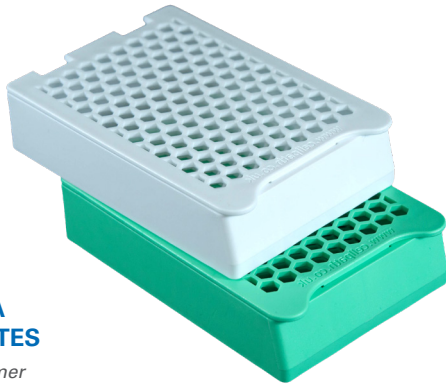


STAINLESS STEEL BASE MOLDS, TISSUE-TEK®

for use with embedding rings

Reusable. Stainless steel. Embedding rings will fit all sizes. Available in 6mm, (1/4") and 12mm, (1/2") depth. 12 molds per case. Sold in USA only.

27190	16 x 16 x 6mm	pkg/12
27191	22 x 22 x 6mm	pkg/12
27192	32 x 25 x 6mm	pkg/12
27193	38 x 25 x 6mm	pkg/12
27194	22 x 22 x 12mm	pkg/12
27195	32 x 25 x 12mm	pkg/12
27196	38 x 25 x 12mm	pkg/12



SUPER MEGA HEX CASSETTES

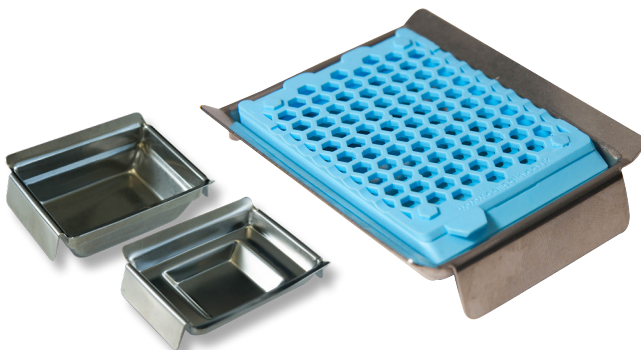
acetal resin polymer

Extra-large processing/ embedding cassettes with covers. Disposable cassette designed to hold larger specimens with a maximum thickness of 12mm. Ideal for prostate, brain, breast tissue and eyes. The new "Hex" pores hold the large tissue specimens to the cassette much more securely than traditional slot design.

Inside dimensions: 64 x 49 x 13mm (2.52" x 1.89" x 0.51")

Outside dimensions: 75 x 52 x 17mm (2.95" x 2.05" x 0.71")

Use with 27197-1 and 27197-2 Super Mega Cassette Stainless Steel Base Molds. Colors available: White, Pink, Green, Yellow, Blue



NEW SUPER MEGA CASSETTE STAINLESS STEEL BASE MOLDS

These molds are suited for all applications in specimen embedding with 27198 and 27199 series Super Mega Cassettes. Manufactured from high quality stainless steel for optimal thermal conductivity, the mold has a highly polished surface for easy paraffin block removal. Reusable. Stackable for easy storage. 27197-1 and 27197-2 have higher sides that allow for more paraffin to be used during embedding to assure a stronger bond of the paraffin block to the cassette. Suggest using with Block-Out Base Mold Release Compound

27197-1 through 27197-3 Super Mega Cassette Base Molds..... pkg/5
27216 Block-Out® Base Mold Release Compound, 4oz. pump spray bottle..... each

SUPER MEGA HEX SLIM CASSETTES

acetal resin polymer

Extra-large processing/ embedding cassettes with covers. Disposable cassette designed to hold larger specimens with a maximum thickness of 5mm. Ideal for prostate, brain and breast tissue.

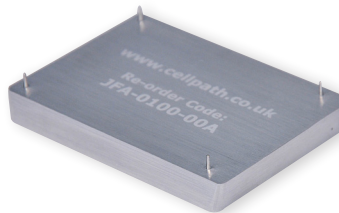
Inside dimensions: 64 x 49 x 5mm (2.52" x 1.89" x 0.25")

Outside dimensions: 75 x 52 x 8mm (2.95" x 2.05" x 0.3")

Use with 27197-3 Super Mega Cassette Stainless Steel Base Mold. Colors available: White, Pink, Green, Yellow, Blue



27199-1 through 27199-5 Super Mega Hex Cassette w/Lid box/100



SPACER BAR FOR SUPER MEGA HEX SLIM CASSETTES

The Super Mega Slim Cassette Spacer Bar is to be used with the Super Mega Slim Cassette when sectioning. The adapter bar fits the back side of an embedded Super Mega Slim paraffin block.

When pre-chilled, the spacer bar will also provide additional cooling to the block during sectioning.

Use with 27199-1 Series Super Mega Hex Slim Cassettes

27199 Spacer Bar for Super Mega Hex Slim Cassettes..... each



SUPER MEGA UNIVERSAL CASSETTE CLAMP FOR MICROTOMES

Universal Super Mega Cassette Clamp is used during the microtomy of large tissue blocks. Incorporating an intuitive quick-release system, the clamp can securely hold any tissue processing cassette from the Super Mega series of cassettes.

Use with Super Mega Cassettes, Super Mega Hex Cassettes, and Super Mega Hex Slim Cassettes with 27199 Spacer Bar

27198 Universal Cassette Clamp for Microtomes each