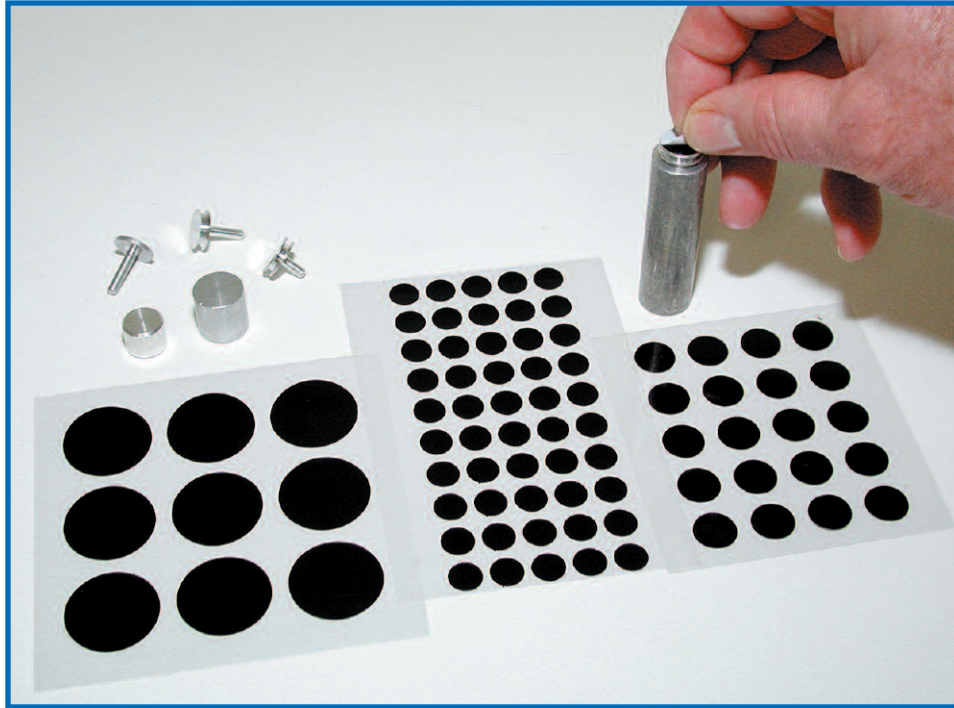


PELCO® Carbon Conductive Tabs, Double Coated



new types added

The simplicity of application, and smooth, clean surfaces of the static-free PELCO Tabs™, Carbon Conductive Tabs are a significant improvement compared to many of the other common adhesives that have been used in microscopy mounting. Both tab sides have a thick conductive adhesive (conductive inner film is 35µm and the adhesive is 45µm on each side for a total of 125µm [5 mils]) with a liner on both sides, a transparent liner and white liner respectively. They are ready for immediate use. On the other hand, the top liner does not have to be removed until the sample is ready to be mounted. This reduces possible contamination. Outgassing is negligible.

Application of the tab to a mount or surface may be done slowly and carefully to maintain surface smoothness.

The conductive adhesive is a carbon filled acrylic glue, free of solvents. It can be removed from the specimen mount with ethyl acetate, ethanol, isopropanol or alcohols. Temperature maximum is 60°C (140°F). Small impurities of Si, Sb, S and very small impurities of Fe, Mg and Na can be found.

This product may also be used for gunshot residue analysis.

Many laboratories use these tabs for SEM in a large diversity of applications. Refrigeration will increase shelf life but a warm up period of one hour is then required before use. The specimen should be placed on the surface under the white liner.

(Use Spectro-Pure Tabs where necessary – see below).

16084-3 PELCO Tabs™, Carbon Conductive Tabs, 9mm OD, pkg/98

16084-1 PELCO Tabs™, Carbon Conductive Tabs, 12mm OD, pkg/100

16084-2 PELCO Tabs™, Carbon Conductive Tabs, 25mm OD. pkg/54

"Spectro Tabs" When you need higher purity carbon

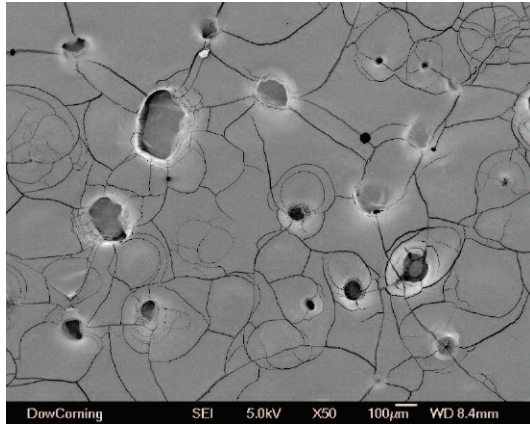
A need existed for a tab with a purer composition in situations such as X-ray analysis. The EDX graph shows a cleaner and smoother surface for those applications that require critical composition study.

16084-4 Spectro Tabs, higher purity conductive carbon tabs, 12mm OD, pkg/120

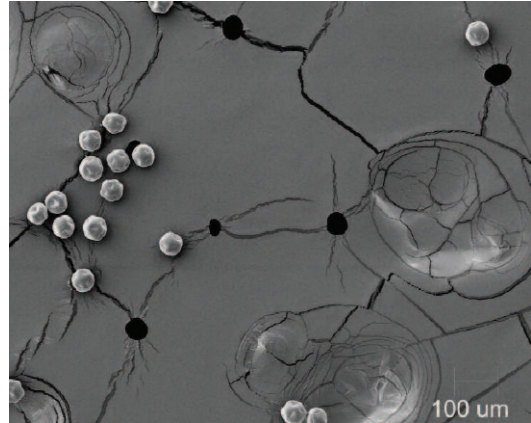
PELCO® Image Tabs™ on other side...

PELCO® Image Tabs™, 260µm (10mil) Carbon Conductive Tabs, Double Coated

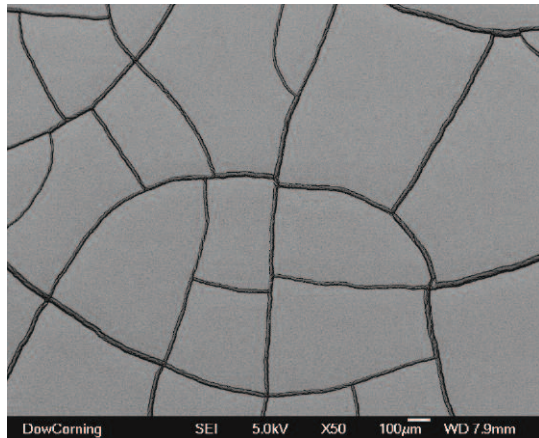
Back by popular demand, the thicker PELCO® ImageTab is a return to the stiff 260µm (10mil) thick smooth conductive tab. Though not as conductive or sticky as the current 100µ (4 mil) PELCO Tabs, the ImageTab is suitable as a photographic background and is repositionable. This tab is also suitable for Jet Scan applications where the tab must be removed and archived. The ImageTab's surface is less prone to bubbling and cracking when metal coated under vacuum and thus better than the 125µm (5mil) PELCO® Tab as a photographic background for small particles like pollen and insect parts.



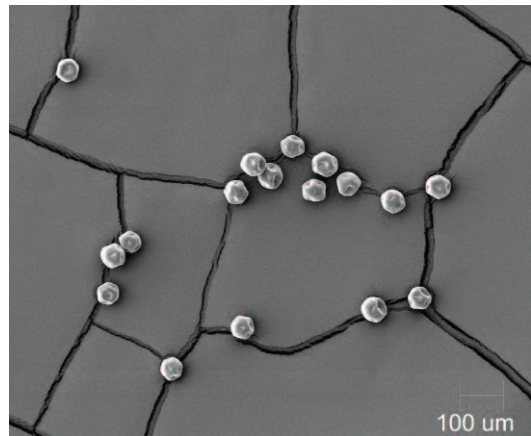
Current 125µm PELCO® Tab AuPd coated 50x



Current 125µm PELCO® Tab AuPd with Pollen 100X



New PELCO® ImageTab AuPd coated 50x



New PELCO® ImageTab AuPd with Pollen 100X

Both sides of the 200µm thick conductive polycarbonate base have 30µm thick conductive glue. Total thickness is 260µm with a liner on both sides. Protection for handling, storage and shipping is provided on one side by the transparent liner sheet and on the other side by the white liner cover.

The conductive adhesive is a carbon-filled acrylic glue, free of solvents. It can be removed from the specimen mount with ethyl acetate, ethanol, isopropanol or alcohols. Temperature maximum is 60°C (140°F). Small impurities of Ni, Cu, Si, Sb, S, Na, P and very small impurities of Fe and Mg can be found. Refrigeration will increase shelf life but a warm-up time of 1 hour to room temperature is then required before use.

16084-20 PELCO® Image Tabs, 12mm OD, pkg/100



P. O. Box 492477, Redding, CA 96049-2477
Phone: 530-243-2200 or 800-237-3526 (USA) FAX: 530-243-3761
Email: sales@tedpella.com Web Site: www.tedpella.com