

BRAIN & TISSUE MATRICES

FOR PRODUCT DETAILS AND COMPLETE SELECTIONS

www.tedpella.com

These high quality Brain Matrices are designed for freehand slicing of discrete regions of the brain. They allow slicing of either coronal or sagittal sections through the brain at intervals of 1mm and 2mm for large brains. These matrices are cast in high grade zinc using the actual animal brain for unsurpassed cavity definition. They are hard chrome plated and have a patented self-cleaning slot design for easy maintenance.

They are ideal for precise and reproducible blocking of living or fixed brain tissue in:

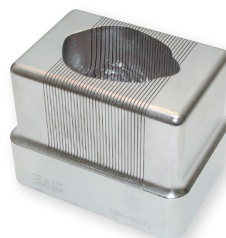
Anatomy: Precise blocking of the brain prior to microtome sectioning

Neurophysiology: Reproducible blocking of the brain prior to sectioning

Biochemical Pharmacology: Reproducible removal of small brain regions for biochemical analysis

These Matrices may be heated, sterilized, chilled and scrubbed clean without damaging the surfaces. Immediate soaking in liquid cleaner is advisable after use.

To keep tissue cool and viable, chill matrices before use.



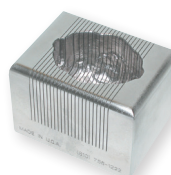
**Dog, Coronal,
2mm (15040)**



**Rhesus Monkey,
Coronal, 2mm (15039)**



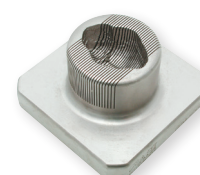
**Cynomolgus Monkey,
Coronal, 2mm (15043)**



**Cat, Coronal,
2mm (15041)**



**Rabbit, Coronal,
2mm (15026)**



**Guinea Pig, Coronal,
1mm (15022)**



**Gerbil, Coronal,
1mm (15001)**



**Rat, Coronal,
1mm (15007)**



**Rat, Sagittal,
1mm (15006)**



**Rat, Dorsal/Ventral,
1mm (15009)**



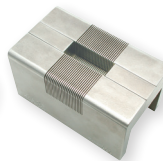
**Rat, Heart,
1mm (15031)**



**Gerbil, Sagittal,
1mm (15002)**



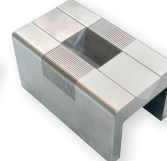
**Mouse,
Coronal,
1mm (15003)**



**Tissue Matrix,
10 x 10mm,
1mm (15013)**



**Tissue Matrix,
6mm Spherical,
1mm (15019)**



**Tissue Matrix,
6mm Rod or V,
1mm (15017)**

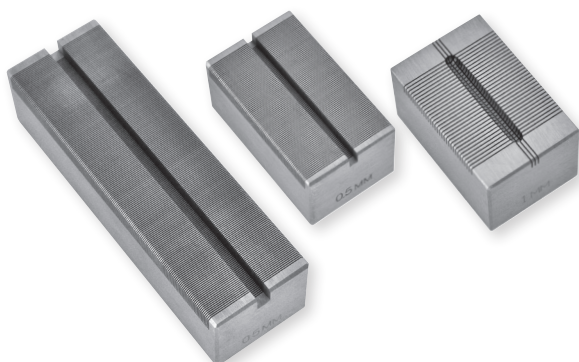
All-Metal, Chrome Coated Brain Matrices Ordering Information

15003	Mouse, 30g, Adult, Coronal, 1mm	each
15004	Mouse, 30g, Adult, Sagittal, 1mm	each
15028	Rat Pup (12-14 Days), 30g, Coronal, 1mm	each
15029	Rat Pup (12-14 Days), 30g, Sagittal, 1mm	each
15005	Rat, 125-185g, Adult, Coronal, 1mm	each
15006	Rat, 125-185g, Adult, Sagittal, 1mm	each
15007	Rat, 200-400g, Adult, Coronal, 1mm	each
15008	Rat, 200-400g, Adult, Sagittal, 1mm	each
15009	Rat, 200-400g, Adult, Dorsal/Ventral, 1mm	each
15031	Rat, Adult, Heart Matrix, 1mm	each
15001	Gerbil, 70g, Adult, Coronal, 1mm	each
15002	Gerbil, 70g, Adult, Sagittal, 1mm	each
15022	Guinea Pig, 350g, Adult, Coronal, 1mm	each
15023	Guinea Pig, 350g, Adult, Sagittal, 1mm	each
15024	Ferret, Adult, Coronal, 1mm	each
15025	Ferret, Adult, Sagittal, 1mm	each
15026	Rabbit, 70g, Adult, Coronal, 2mm	each
15027	Rabbit, 70g, Adult, Sagittal, 2mm	each
15037	Hamster, 100g, Adult Coronal, 1mm	each
15038	Hamster, 100g, Adult Sagittal, 1mm	each
15041	Cat, 35 Slots, Coronal, 2mm	each
15040	Dog, 32 Slots, Coronal, 2mm	each
15039	Monkey, Rhesus, Adult (2-3 Years, 2-3 kg), 40 Slots, Coronal, 2mm	each
15043	Monkey, Cynomolgus, Adult, Coronal, 2mm	each
15013	Tissue Matrix, 10 x 10mm(L) Chamber, 1mm	each
15014	Tissue Matrix, 15 x 15mm(L) Chamber, 1mm	each
15015	Tissue Matrix, 20 x 20mm(L) Chamber, 1mm	each
15016	Tissue Matrix, 25 x 25mm(L) Chamber, 1mm	each
15017	Tissue Matrix, 6mm Rod Shape or "V", 1mm	each
15018	Tissue Matrix, 4mm Spherical Chamber, 1mm	each
15019	Tissue Matrix, 6mm Spherical Chamber, 1mm	each

See reverse for stainless steel & acrylic brain matrices.

 **TED PELLA, INC.**
Microscopy Products for Science and Industry

www.tedpella.com sales@tedpella.com 800-237-3526



SPINAL CORD MATRICES

Spinal cord matrices serve for precise and reproducible blocking of the spinal cord for freehand slicing. They are machined with high precision out of high quality stainless steel, robust and easy to clean. They can be autoclaved. #15171 and #15172 are for coronal (perpendicular) slicing, whereas #15170 allows both coronal and sagittal (longitudinal) slicing.

It is highly recommended to soak and clean the matrix each time immediately after use, not allowing the remaining tissue to dry.

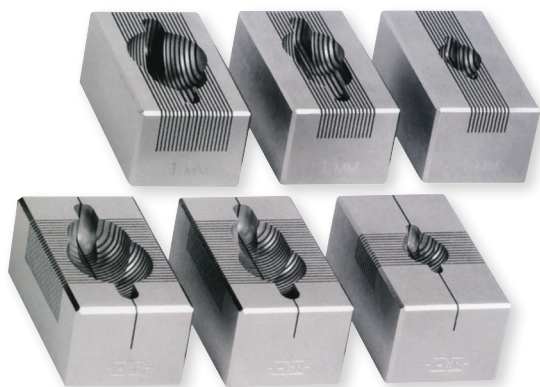
15170	Mouse, Sagittal and Coronal, 1mm	each
15171	Mouse, Coronal, 0.5mm	each
15172	Rat, Coronal, 0.5mm	each

STAINLESS STEEL BRAIN/HEART MATRICES

These Matrices are made of hard stainless steel. They can be cooled, cleaned, and autoclaved. They have smooth surfaces that do not chip. The investigator will be able to get reproducible coronal or sagittal sections ensuring precise blocking prior to microtome sectioning. The coronal brain matrices have the additional feature of a mid-line sagittal cut to facilitate the separation of the left and right hemispheres.

It is advisable to not let any tissue dry onto the matrix but rather soak the matrix immediately after use for easier cleaning.

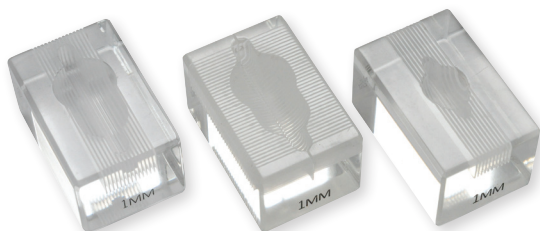
- Stainless Steel
- Highly polished
- Precision machined
- Precise blocking of the brain or heart
- Repeatable 1mm or 0.5mm segments



15065	Rat, 175-300g, Coronal, 1mm	each
15066	Rat, 300-600g, Coronal, 1mm	each
15067	Mouse, Coronal, 1mm	each
15068	Rat, 175-300g, Sagittal, 1mm	each
15069	Rat, 300-600g, Sagittal, 1mm	each
15045	Mouse, Coronal, 0.5mm	each
15046	Mouse, Sagittal, 0.5mm	each
15047	Rat, 300-600g, Coronal, 0.5mm	each
15048	Rat, 300-600g, Sagittal, 0.5mm	each
15056	Mouse Heart, 0.5mm	each
15057	Rat Heart, 0.5mm	each

ACRYLIC BRAIN MATRICES

An economical alternative to metal brain matrices. The coronal brain matrices have the additional feature of a mid-line sagittal cut to facilitate the separation of the left and right hemispheres. All divisions are 1mm apart.



15050	Mouse, 30g, Adult, Coronal, 1mm	each
15051	Mouse, 30g, Adult, Sagittal, 1mm	each
15052	Rat, 175-300g, Adult, Coronal, 1mm	each
15053	Rat, 175-300g, Adult, Sagittal, 1mm	each
15054	Rat, 300-600g, Adult, Coronal, 1mm	each
15055	Rat, 300-600g, Adult, Sagittal, 1mm	each