

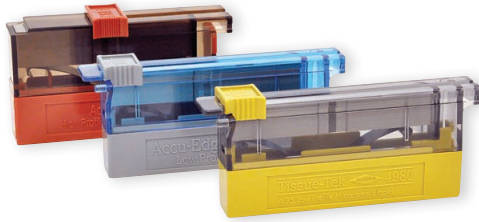
BLADES FOR DISSECTION & MICROTOMES



NEW ENCORE™ LOW AND HIGH PROFILE DISPOSABLE MICROTOME BLADES

Precise edge geometry provides quality, consistent sections. Using ultra-thin gauge steel (0.010"), and a steeper angle to enhance sharpness, Encore™ blades last 48% longer and are 32% sharper than standard disposable microtome blades. A proprietary PTFE coating allows the full 80mm of cutting edge to be utilized.

- 27233 Encore™ Low Profile Disposable Microtome Blades, PTFE Coated, Dispenser of 50each
- 27234 Encore™ High Profile Disposable Microtome Blades, PTFE Coated, Dispenser of 50each



TISSUE-TEK® ACCU-EDGE® HIGH AND LOW PROFILE DISPOSABLE BLADES

These blades are reliably sharp and uniformly consistent. Ultrasharp edges have a PTFE resin coating, making it possible to obtain acceptable ribbons sooner and increase section quality. The low profile blades can be used for sections less than 3µm, while the high profile blades are designed for tough materials and sections over 3µm. Sold in USA only.

- 27235 Accu-Edge® 4689 Low Profile Blades, Dispenser of 50each
- 27236 Tissue-Tek® Feather® 4980 Low Profile Blades, Dispenser of 50each
- 27237 Accu-Edge® 4685 High Profile Blades, Dispenser of 50each



SHUR/SHARP™ DISPOSABLE MICROTOME BLADES

Choose from these three disposable microtome blades to meet all your sectioning needs: standard low profile blades for routine thin tissue samples; high profile blades for thicker sections; and heavy duty blades for difficult-to-section samples like uterus.

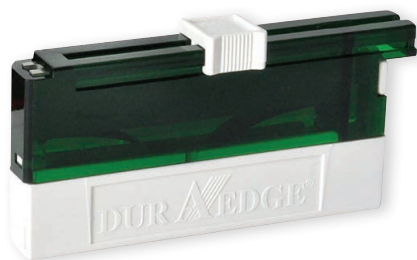
- 27230 Standard Low Profile Blades, Dispenser of 50each
- 27231 High Profile Blades, Dispenser of 50each
- 27232 Heavy Duty Microtome Blades, Dispenser of 35each



DURAEEDGE® HIGH PROFILE DISPOSABLE MICROTOME BLADES

High quality, hardened stainless steel finely honed and polished for a flaw-free edge, these blades are PTFE coated and available in high profile. A special proprietary process ensures edge quality and promotes durability. Economy high profile blades are ceramic coated, eliminating edge corrosion and enhancing product life.

- 27241 DuraEdge® 7310 High Profile Disposable Blades, PTFE Coated, Dispenser of 50each
- 27243 DuraEdge® 7203 High Profile Disposable Blades, PTFE Coated, Dispenser of 50each



DURAEEDGE® LOW PROFILE DISPOSABLE MICROTOME BLADES

New triple facet blades offer superior cutting edge and durability. Quality stainless steel with three angled facets for the ultimate blade sharpness. Uniform PTFE coating reduces friction, eliminates striations and compression. No break-in period required.

- 27238 DuraEdge® 7223 Low Profile Disposable Blades, Dispenser of 50each

BLADES FOR DISSECTION & MICROTOMES



GEM® SINGLE EDGE, CARBON STEEL BLADES

Best quality 3 facet blade, single edge, aluminum back. Individually protected, 2 boxes of 100 each.

Length: 38.9mm (1.53"), Cutting Edge Length: 38.8mm (1.527"), Width: 19.6mm (0.77"), Thickness: 0.229mm (0.009")

121-1 GEM® Carbon Steel Blades..... box/200



SINGLE EDGE, CARBON STEEL BLADES, DEGREASED

Durable 2 facet blade, single edge, steel back. Degreased and washed to remove oil and reduce particles.

Length: 38.9mm (1.53"), Cutting Edge Length: 38.8mm (1.527"), Width: 19.6mm (0.77"), Thickness: 0.229mm (0.009")

121-32 Carbon Steel Blades, 2 Facet, Degreased, NOT Individually Wrapped..... box/115



GEM® SINGLE EDGE, STAINLESS STEEL UNCOATED BLADES

Best quality 3 facet blade, single edge, aluminum back. Individually protected, 2 boxes of 100 each.

Length: 38.9mm (1.53"), Cutting Edge Length: 38.8mm (1.527"), Width: 19.8mm (0.78"), Thickness: 0.229mm (0.009")

121-2 GEM® Stainless Steel Uncoated Blades box/200



GEM® SINGLE EDGE, STAINLESS STEEL BLADES, DEGREASED

Same 3 facet blade as 121-2 with aluminum back. Degreased and washed to remove oil and reduce particles.

Length: 39.6mm (1.56"), Cutting Edge Length: 39.6mm (1.56"), Width: 19.6mm (0.77"), Thickness: 0.229mm (0.009")

121-31 GEM® Stainless Steel Blades, Degreased, NOT Individually Wrapped box/115



GEM® SINGLE EDGE, PTFE-COATED BLADES

Cuts through epoxies nicely. Stainless steel single edge, 3 facet, PTFE-coated stainless steel GEM® blades. Individually protected, 2 boxes of 100 each.

Length: 39.6mm (1.56"), Cutting Edge Length: 38.8mm (1.527"), Width: 19.6mm (0.77"), Thickness: 0.229mm (0.009")

121-3 GEM® Single Edge, PTFE-Coated, Stainless Steel Blades box/200



INJECTOR-STYLE, STAINLESS STEEL, PTFE-TREATED BLADES

Useful for microtome sectioning and other sectioning applications. Single edge, 20 per dispenser.

Length: 38mm (1.5"), Cutting Edge Length: 36.3mm (1.43"), Width: 8mm (0.314"), Thickness: 0.25mm (0.010")

121-4 Injector Blades, PTFE-Treated..... dispenser/20



FEATHER® BLADES

Double edge, carbon steel blade. Sharp edges; may be broken in half lengthwise (use eye and finger protection for safety). The preferred cutting blade for the PELCO easiSlicer™.

Length: 42.8mm (1.69"), Cutting Edge Length: 36mm (1.42"), Width: 22mm (0.865"), Thickness: 0.127mm (0.0045")

121-9 Feather® Double Edge Carbon Steel Blades box/10



DOUBLE EDGE, BREAKABLE STYLE BLADES

PTFE-treated, individually wrapped and bulk packed. Lightly oiled to prevent corrosion.

Length: 42.9mm (1.69"), Cutting Edge Length: 37.1mm (1.46"), Width: 21.7mm (0.855"), Thickness: 0.11mm (0.004")

121-6 Double Edge Stainless Steel Cutting blades box/250