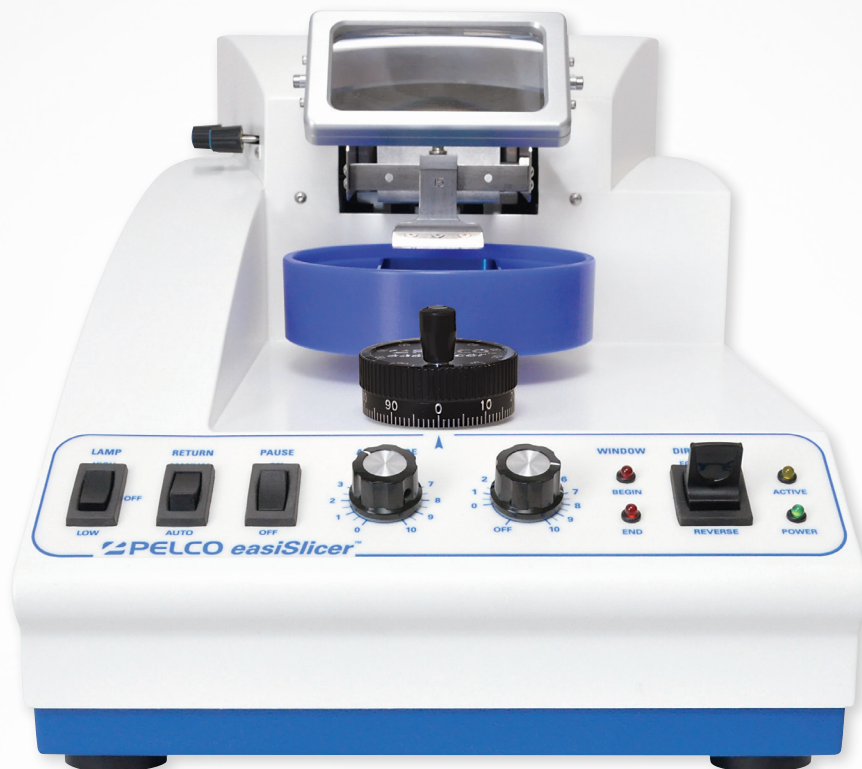
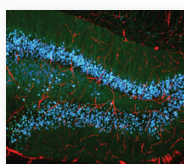


# The **perfect slice** at the **right price.**



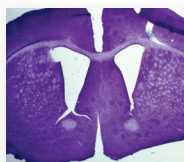
INTRODUCING THE **NEW STANDARD** IN TISSUE SLICING

## **PELCO** *easiSlicer*<sup>TM</sup>



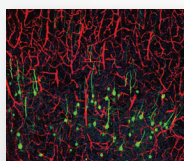
### **Affordable Quality.**

A fresh approach to traditional standards, the PELCO easiSlicer<sup>TM</sup> brings precision vibratory slicing to labs of all sizes.



### **Consistent Reliability.**

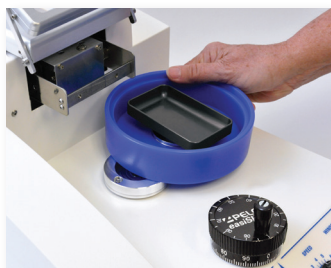
Solid construction and exceptional stability provides exacting control of section thickness with minimal z-axis vibration and consistently produces high quality sections.



### **Simple Versatility.**

Simple, effective design makes the PELCO easiSlicer<sup>TM</sup> perfect for multi-user and multi-application labs.

# 



Novel bath design utilizes unique easy-locking base for secure and simple attachment; no risk of fluid leaking into the instrument.



Magnifier/LED light assembly avoids risk of high temperature, offers 2X magnification and convenient, smooth operation.



Easily visible control panel LED lights indicate active vibratory status, an exclusive safety feature, and cutting window boundaries.



Removable blade holder with innovative tooling for secure and rigid hold of Feather® blades at 15° angle.

## **Features & Benefits**

- Precision design for accurate, high quality sections with minimal z-axis vibration
- Novel bath design utilizes unique easy-locking base making it simple to clean
- Optional magnetic base for tissue mounts available
- Cuts sections to 40 microns
- Anodized specimen tray magnetically locks onto bath
- LED lights indicate active vibratory status and cutting window boundaries
- Removable blade holder securely holds Feather® blades at a 15° preset angle
- Fully assembled, ready to use
- Affordable pricing
- Universal power supply 100-240V, 50Hz ±5



Optional base for tissue mounts magnetically locks into bath in place of specimen tray.



See reverse for complete ordering information & accessories.



# Introducing **THE NEW STANDARD** in vibratory slicing from Ted Pella, Inc.

The PELCO easiSlicer™ introduces the new standard in vibratory slicing. It combines ease of operation, precise engineering and affordable pricing in a high quality instrument. The PELCO easiSlicer™ uses rigid construction and advanced engineering technologies to essentially eliminate backlash resulting in minimal z-axis vibration normally associated with more expensive vibratory slicers. All operational controls are located on the front of the instrument, clearly labeled and sealed against moisture. The specimen tray is held securely in the polypropylene bath by a set of strong magnets. The bath is attached from the side with a unique spring-loaded base that locks onto the PELCO easiSlicer™ by simple pressure. The integrated bath and tray design moves as a unit for sectioning thickness or height adjustment. The bath and tray can be easily separated for simple and fast clean-up, eliminating the risk of leaks and a cumbersome drain or hose.

The amplitude and speed controls are conveniently mounted in the center of the control panel for ease of operation. The sturdy, removable blade holder is offered in 3 angles: fifteen, eighteen and twenty-one degrees to provide choice for each individual application. This eliminates the need to calibrate the blade angle. The specialized design of the blade holder provides a secure and rigid grasp of the cutting blade. This stability of design removes the weakening or bending of parts as seen in a spring clamp design. Feather®

Blades are recommended but the blade holder will accommodate other types of blades. The Sectioning Window Controls guide the user for precise cutting window control with indicator lights on the control panel to maintain consistency of placement.

The Magnifier and Light Assembly offers bright white LED lighting (no risk of high temperatures) with high or low settings, depending on the user's need. The Magnifier can be moved out of the viewing path, if desired. The entire assembly operates smoothly on metal slides.

The large Section Thickness Knob is centrally located in the work area. The knob is labeled in microns and has a perceptible detent every 5 microns. One complete revolution of the knob is 100 microns. The entire bath and tray assembly is raised and lowered by this Section Thickness Knob. The PELCO easiSlicer™ has a Return Switch that provides the user with an option for Auto Return after each slice. In the Manual Return mode, the cutting will cease once the end of the section window has been reached. This allows the retraction of the specimen before the return of the blade in order to prevent damage to the specimen.

The PELCO easiSlicer™ comes equipped with tools and supplies to start cutting quality, consistent sections, right out of the box.

## Technical Specifications

Maximum Specimen Size	40 x 40mm (1.58" x 1.58")
Maximum Specimen Height	15mm (0.6")
Specimen Bath	Spring-loaded; Polypropylene
Specimen Tray	Rectangular with Magnet Release
Blade Type	Feather® Blades Recommended
Blade Angle	15° Standard; 18°, 21° Available
Sectioning Window	10 - 40mm (0.4" - 1.58")
Specimen Height Adjustment (Z-Axis)	15mm (0.59") Total Travel in 1µm Increments; Tactile Click Stops at 5µm
Cutting Arm Speed (Y-Axis)	Forward: 0 - 2.0mm/sec (0 - 0.08"/sec); Reverse: 5mm/sec (0.2"/sec); Travel: 40mm (1.58") Total
Vibratory Amplitude (X-Axis)	0 - 1.00mm (0.04") Total; Continuously Adjustable
Cutting Arm Frequency	50Hz ±5 Factory Set
Magnification	2X Magnifier
Illumination	LED Illumination; LOW/OFF/HIGH
Dimensions	535 x 300 x 290mm (21.1" x 11.8" x 11.4")
Weight	16.8kg (37lbs)
Utility Requirements	100 - 240V; 50/60 Hz; 345VA

## PELCO easiSlicer™ Ordering Information

11000 PELCO easiSlicer™ Vibratory Tissue Slicer.....each

*Included Accessories: 1 Black Anodized Tray (11020); 1 Bath (11010); 1 Specimen Retriever (101-33); 1 Blade Holder 15° (11050-15); 1 Box of 10 Feather® Blades (121-9); 1 Bottle PELCO® Pro CA44 Tissue Adhesive, 20ml (10033); 1 PELCO easiSlicer™ Dust Cover (11060); 1 PELCO easiSlicer™ Blade Safe (121-25); 1 Hex Driver for Blade Holder (11052), 1 PELCO easiSlicer™ Blade Holder Rest (11055); 1 Set of Camel's Hair Brushes (11870); 1 Replacement Fuse (030-758)*

## PELCO easiSlicer™ Accessories

11010	Bath .....	each
11012	Magnetic Base for Tray .....	each
11014	Magnetic Base for Tissue Mounts .....	each
11020	Black Anodized Tray .....	each
11022	Blue Anodized Tray .....	each
11030	Engraved Tissue Mounts Mixed-pak: (2ea) 25mm, (2ea) 32mm, (2ea) 38mm, (2ea) 50mm .....	pkg/8
11031	Engraved Tissue Mount, 25mm.....	pkg/5
11032	Engraved Tissue Mount, 32mm.....	pkg/5
11033	Engraved Tissue Mount, 38mm.....	pkg/5
11034	Engraved Tissue Mount, 50mm.....	pkg/5
11050-15	Blade Holder 15°.....	each
11050-18	Blade Holder 18°.....	each
11050-21	Blade Holder 21°.....	each
11052	Hex Driver for Blade Holder.....	each
11055	Blade Holder Rest.....	each
11060	Dust Cover .....	each
121-25	Blade Safe.....	pkg/4

## Related Products



### Feather® Blades

The preferred razor blade for use with the PELCO easiSlicer™. Double edge, carbon steel blade. Sharp edges; may be broken in half lengthwise. Length: 42.8mm (1.685"); Cutting Edge Length: 36mm (1.42") Width: 22mm (0.865"); Thickness: 0.127mm (0.0045").

121-9 Feather® Double Edge Cutting Blades, box/10 .....each



### PELCO easiSlicer™ Blade Safe

Safely store up to 100 used blades for disposal. Discard when full. Length: 69.85mm (2.75"); Width: 50.8mm (2"); Height: 38.1mm (1.5"); Blade Slot Length: 60.325mm (2.375").

121-25 PELCO easiSlicer™ Blade Safe .....pkg/4



### PELCO® Pro CA44 Tissue Adhesive

An instant tissue adhesive based on cyanoacrylate; developed to glue tissue on specimen holders. Compatible to Loctite 404 Tissue Adhesive.

10033 PELCO® Pro CA44 Tissue Adhesive, 20ml.....each



### PELCO® Pro Specimen Retrievers

The perfect glass tool for retrieving free floating sections from the bath of the PELCO easiSlicer™.

101-33 PELCO® Pro Specimen Retrievers .....pkg/5