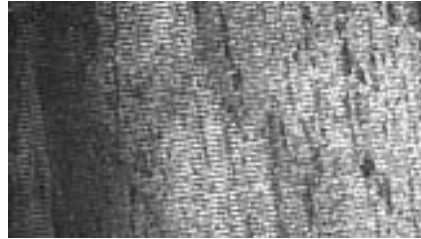


Catalase Crystals

Product No. 612



Beef liver catalase crystals have lattice spacings of 8.75nm and 6.85nm. These are easily visible, and can be used to calibrate the upper end of the magnification range of a microscope.

Operating Hints

There will be other material than catalase crystals in the field of view. The crystals can be distinguished by their regular rectangular appearance (some however, do not have regular edges). We find that the crystals do not all stain to the same degree. Individual crystals in a grid square will be found to be better stained than crystals on the edge of a large aggregate. When a suitable area has been chosen at low magnification, use an instrumental magnification of 30000 - 40000 to view the crystals with the aid of a 10X microscope. The crystal planes are only visible fairly close to the focus, so this must be adjusted carefully (a good starting point is found by looking for minimum contrast with the objective aperture removed).

If there is any appreciable astigmatism due to a dirty or misaligned objective aperture, this can also make the crystal planes difficult to observe.

Wrigley, J, (1968). *Ultrastructure Res*, 24, 454.