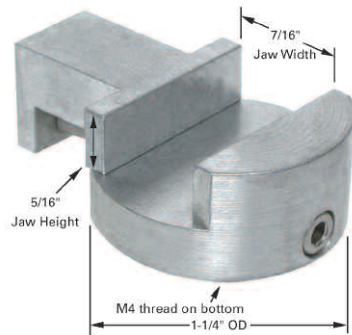


Specimen Mounts and Holders for the Hitachi TM-1000 Tabletop SEM



The wide choice of special specimen holders created for the Hitachi TM-1000 will allow for using a greater variety of specimens. Easy mounting of specimens will make the TM-1000 more productive and will give access to more applications. There are also adapters available to accommodate pin stub mounts and small cylinder mounts which are used in other Scanning Electron Microscopes. This will allow users of the TM-1000 to share specimen mounts used on other SEM platforms.

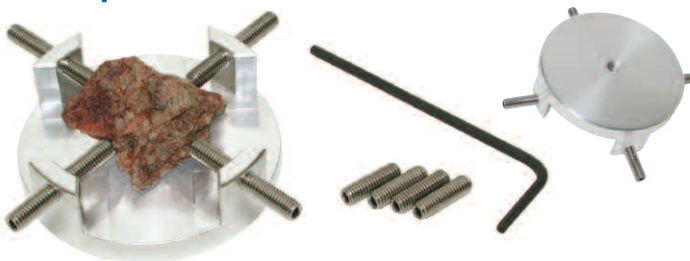
Micro Vise Holder



A fast and clean way to hold a variety of specimens. The maximum gap is 11mm ($\frac{7}{16}$ "). The jaws are 25.4mm (1") wide. Material: Machined aluminum with stainless steel screw. Allen wrench included.

Prod. No.	Description	Unit
15340-4	Hitachi TM-1000 Micro Vise Holder, M4	each

Bulk Specimen Holder



Holds irregular and round specimens up to a diameter of 31.75mm (1- $\frac{1}{4}$ "). Material: Machined brass with two sets of stainless steel allen screws (long and short). Allen wrench included. Shown holding a specimen and bottom view.

Prod. No.	Description	Unit
15308-4	Hitachi TM-1000 Bulk Specimen Holder, M4	each

Straight Bulk Specimen Holder



Versatile specimen holder to clamp irregular shaped specimens. Opening is 15.9mm ($\frac{5}{8}$ ")

W x 25.4mm (1") L x 9.5mm ($\frac{3}{8}$ ") D. Material: Machined aluminum with stainless steel set screws. Allen wrench included. Shown holding a specimen and bottom view.

Prod. No.	Description	Unit
15320-4	Hitachi Straight Bulk Specimen Holder, M4	each

Multipurpose Specimen Mount



Accepts up to 25.4mm (1") diameter specimens. The slotted design also allows for clamping elongated or rod shaped specimens. Material: Machined aluminum with stainless steel allen screws. Allen wrench included. Shown holding a specimen and bottom view.

Prod. No.	Description	Unit
15305-4	Hitachi Multi Purpose Specimen Holder, M4	each

Cross Section Holder



This specimen holder is designed to investigate cross sections and flat samples up to 6.35mm ($\frac{1}{4}$ "). Adjustable angle. Material: Non-magnetic stainless steel.

M4 Thread

Prod. No.	Description	Unit
15325-4	Hitachi Cross Section Holder, M4	each

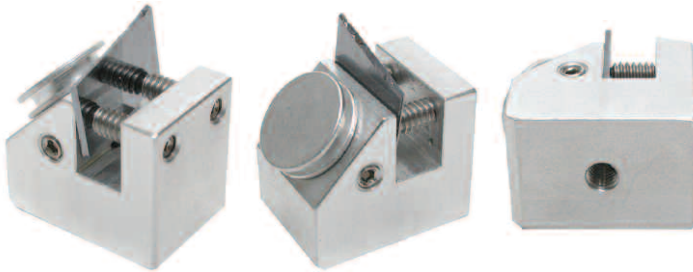
Adjustable Profile Holder



Designed to adjust the exact angle for cross sections made from wafers. Maximum specimen thickness 3.2mm (1/8"). Material: Machined aluminum with brass and stainless steel allen set screws. Allen wrench included. Shown holding a thin specimen and bottom view.

Prod. No.	Description	Unit
15356-4	Hitachi Adjustable Profile Holder, M4	each

45°/90° Combination Holder



Versatile combined specimen holder for 90° cross sections and 45° pin stub. Material: Machined aluminum with stainless steel allen set screws. Allen wrench included. Shown holding a thin specimen and pin stub and bottom view.

Prod. No.	Description	Unit
15358-4	Hitachi 45°/90° Combination Holder, M4	each

Metallurgical Mount Holder 25mm (1")



Specimen holder for 25mm (1") metallurgical mounts. Material: Machined aluminum with stainless steel allen screws. Allen wrench included. Shown holding a specimen.

Prod. No.	Description	Unit
15403	Hitachi Metallurgical Mount Holder, 25mm, M4	each

Metallurgical Mount Holder 32mm (1-1/4")



Specimen holder for 32mm (1-1/4") metallurgical mounts. Material: Machined aluminum with stainless steel allen screws. Allen wrench included. Shown holding a specimen.

Prod. No.	Description	Unit
15404	Hitachi Metallurgical Mount Holder, 32mm, M4	each

Metallurgical Mount Holder 38mm (1-1/2")



Specimen holder for 38mm (1-1/2") metallurgical mounts. Material: Machined aluminum with stainless steel allen screws. Allen wrench included. Shown holding a specimen.

Prod. No.	Description	Unit
15405	Hitachi Metallurgical Mount Holder, 38mm, M4	each

Metallurgical Mount Holder 50.8mm (2")



Specimen holder for 50.8mm (2") metallurgical mounts. Material: Machined aluminum with stainless steel allen screws. Allen wrench included.

Prod. No.	Description	Unit
15406	Hitachi Metallurgical Mount Holder, 50.8mm, M4	each

Specimen Holder Adapters for the Hitachi TM-1000 Tabletop SEM

Thin Specimen Split Mount



Double hex screw tightening for a firm hold with M4 thread, 15mm (.591") dia. x 10mm (.394") high. Material: Machined aluminum with stainless steel allen set screws. Allen wrench included. Shown holding a thin specimen and bottom view.

Prod. No.	Description	Unit
15335-4	Hitachi Thin Specimen Split Mount, M4	each

Single Pin Stub Holder



Pin stub mount adapter to M4 thread, 15 x 10mm L. Enables the use of the common pin stub mounts for FEI/Philips, ZEISS/LEO, Leica, Cambridge Instruments, Amray, CamScan and Tescan SEMs in the Hitachi TM-1000. Material: Machined aluminum with stainless steel allen set screw. Allen wrench included. Shown holding a pin stub and bottom view.

Prod. No.	Description	Unit
15363-1	Hitachi Single Pin Stub Holder, M4	each

Multi Pin Stub Holder



Accommodates up to four standard 12.7mm (1/2") pin stubs with a 3.2mm (1/8") pin diameter. Enables the use of the common pin stub mounts for FEI/Philips, ZEISS/LEO, Leica, Cambridge Instruments, Amray, CamScan and Tescan SEMs in the Hitachi TM-1000. Material: Machined aluminum with stainless steel allen set screws. Allen wrench included. Shown holding pin stubs and bottom view.

Prod. No.	Description	Unit
15310-4	Hitachi Multi Pin Stub Holder, M4	each

Multi Specimen Holder



Holds up to five 9.5mm cylinder mounts, commonly used in JEOL SEMs. Material: Machined aluminum with stainless steel allen set screws. Allen wrench included. Shown holding cylinder mounts and bottom view.

Prod. No.	Description	Unit
15315-4	Hitachi Multi Specimen Holder, M4	each

S-4 Mount Adapter



The S-4 mount adapter allows the use of the S-4 specimen mounts (Cambridge Instruments, Leica, CamScan) on the Hitachi TM-1000 stage. 31mm diameter, 6mm height. Material: Machined aluminum with stainless steel screw.

Note: Top Image shows S-4 mount left of the adapter, bottom: S-4 mount inserted into adapter.

Prod. No.	Description	Unit
15317	Hitachi S-4 Mount Adapter, M4	each

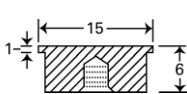
Adjustable Spring Loaded Vise for Samples



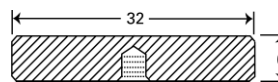
Adjustable spring loaded vise jaws hold various sizes and shapes of flat specimens. For samples from 10 to 25mm wide.

Prod. No.	Description	Unit
15384-2	Hitachi Adjustable Spring Loaded Vise, M4	each

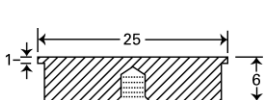
Specimen Mounts for the Hitachi TM-1000 Tabletop SEM



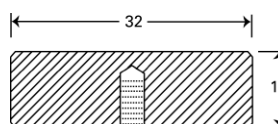
Prod. No.	Description	Unit
16324	Specimen Mount, M4, 15 x 6mm	pkg/10 pkg/50 pkg/100



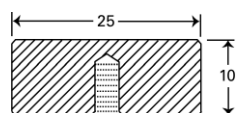
Prod. No.	Description	Unit
16325	Specimen Mount, M4, 32 x 6mm	pkg/10 pkg/50



Prod. No.	Description	Unit
16327	Specimen Mount, M4, 25 x 6mm	pkg/10 pkg/50 pkg/100



Prod. No.	Description	Unit
16326	Specimen Mount, M4, 32 x 10mm	pkg/10 pkg/50



Prod. No.	Description	Unit
16323	Specimen Mount, M4, 25 x 10mm	pkg/10 pkg/50

SEMClip™ Cylinder Mounts for Hitachi SEMs



back view

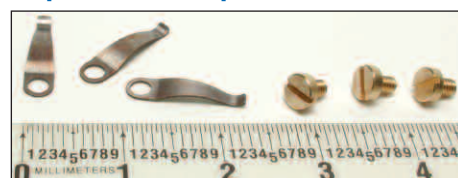
Prod. No.	Description	Unit
16324-10	SEMClip™, 15 x 6mm x M4 Cylinder Mount, 1 clip	each



back view

Prod. No.	Description	Unit
16327-10	SEMClip™, 25 x 6mm x M4 Cylinder Mount, 1 clip	each
16327-20	SEMClip™, 25 x 6mm x M4 Cylinder Mount, 2 clips	each
16327-30	SEMClip™, 25 x 6mm x M4 Cylinder Mount, 3 clips	each

SEMClip™ Replacement Clips and Screws



Prod. No.	Description	Unit
16399	SEMClip™ Clips	pkg/10
16399-10	SEMClip™ Screws, Brass, M2x3	pkg/10



back view

Prod. No.	Description	Unit
16326-10	SEMClip™, 32 x 10mm x M4 Cylinder Mount, 1 clip	each
16326-20	SEMClip™, 32 x 10mm x M4 Cylinder Mount, 2 clips	each
16326-30	SEMClip™, 32 x 10mm x M4 Cylinder Mount, 3 clips	each



P. O. Box 492477 Redding, CA 96049-2477
Phone: 530-243-2200 or 800-237-3526 (USA)
FAX: 530-243-3761

sales@tedpella.com www.tedpella.com